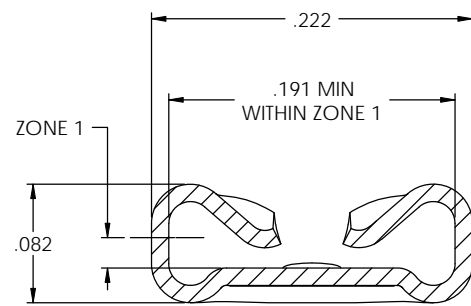
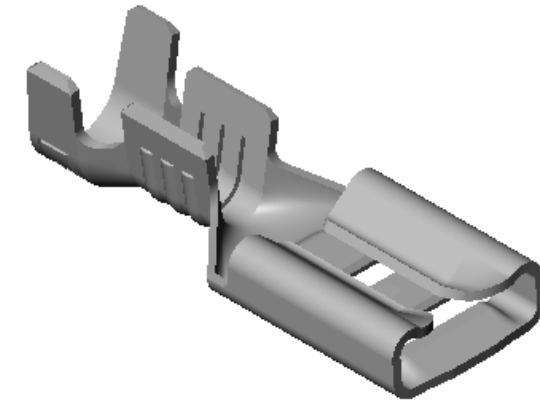
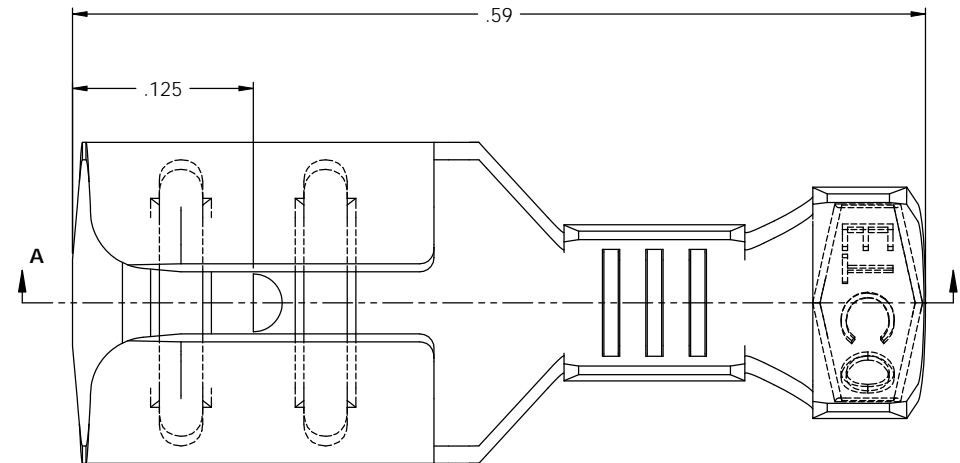


NOTE:

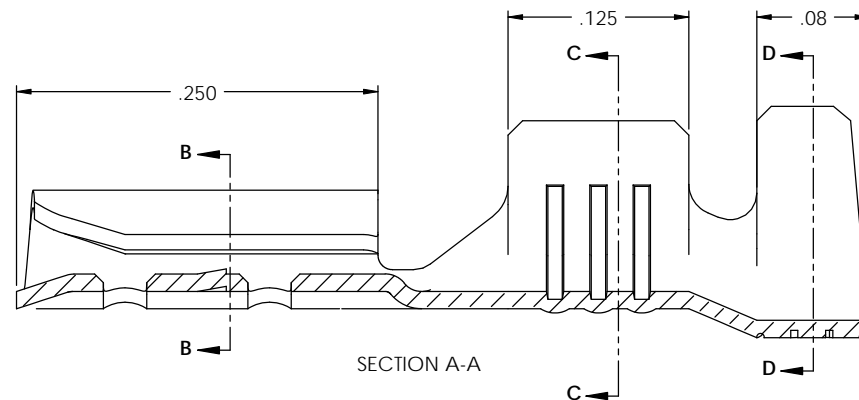
- 1.) MAT'L: .012 THK., BRASS, #4 TEMPER (FULL HARD), PER ETCO METAL CODE NO. 00046.
- 2.) MAT'L: .012 THK., PRE-TINNED BRASS, #4 TEMPER (FULL HARD), PER ETCO METAL CODE NO. 01066.
- 3.) MAT'L: .012 THK., PRE-NICKEL PLATED STEEL, #2 TEMPER (HALF HARD), PER ETCO METAL CODE NO. 03076.
- 4.) PARTS MAY BE COATED WITH A LIGHT FILM OF LUBRICATION USED IN THE MANUFACTURING PROCESS.
- 5.) INSERTION/WITHDRAWAL FORCES ARE INDICATED ON THE QUALITY INSPECTION RECORD.
- 6.) MATING PART: .020 X .187 MALE.
- 7.) WIRE RANGE: 20-16 AWG.
- 8.) INSULATION RANGE:  $\varnothing$ .090-.130.

P/C	DESCRIPTION	MAT'L	UL	UL	UL
07371	D160E-N-HB	NOTE 1	X		X
07372	D160E-N-THB	NOTE 2	X		X
07373	D160E-N-NPS	NOTE 3		X	

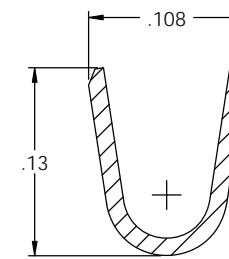
Rev.	Description of Change/ SCN#	Date
1	REDRAWN ON SOLIDWORKS NO CHANGES ORG.ENG.DWG.DATE: 1-30-97 SCJ	9-8-05
2	SCN# 140290 SCJ	11-6-07



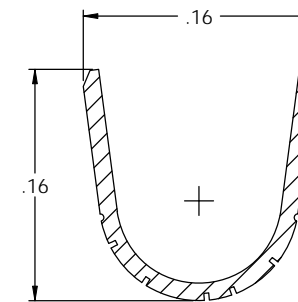
SECTION B-B



SECTION A-A



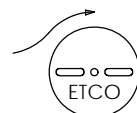
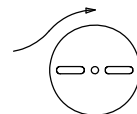
SECTION C-C



SECTION D-D



DIRECTION EXITING TOOL,  
EARS UP, TO THE LEFT



DIRECTION TOWARD APPLICATOR,  
EARS UP, TO THE RIGHT

**UNCONTROLLED COPY**

<p>THIRD ANGLE PROJECTION</p>	TOOL NO.	Title: .020 X .187 FEMALE DISCONNECT		
	<b>0713</b>	DO NOT SCALE DWG.	Drawn By: S.JOHNSON	Date: 9-8-05
<p>TOLERANCES UNLESS OTHERWISE SPECIFIED</p> <p>INCHES: XX - <math>\pm</math> .030 XXX - <math>\pm</math> .015</p> <p>ANGLES: <math>\pm</math> 5°</p>		<p>ETCO Incorporated Engineered Products 25 Bellows Street Warwick, RI 02888 Phone: (401) 467-2400 Fax: (401) 467-9230 www.ETCO.com</p>	<p>Chk'd/App'd By:</p>	<p>Scale: 12X</p> <p>Size: C</p>
		Dwg. No.: D160E-N cust		