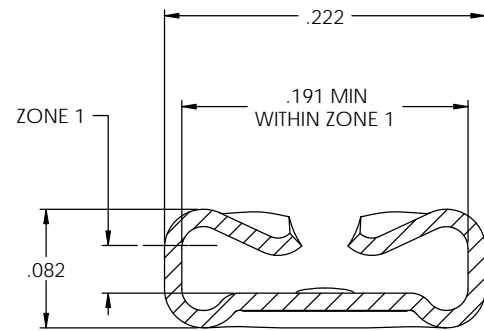
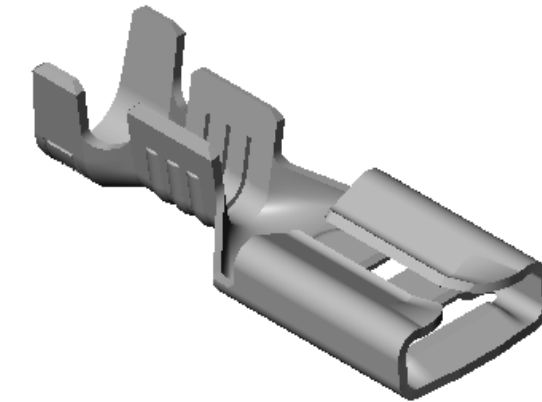
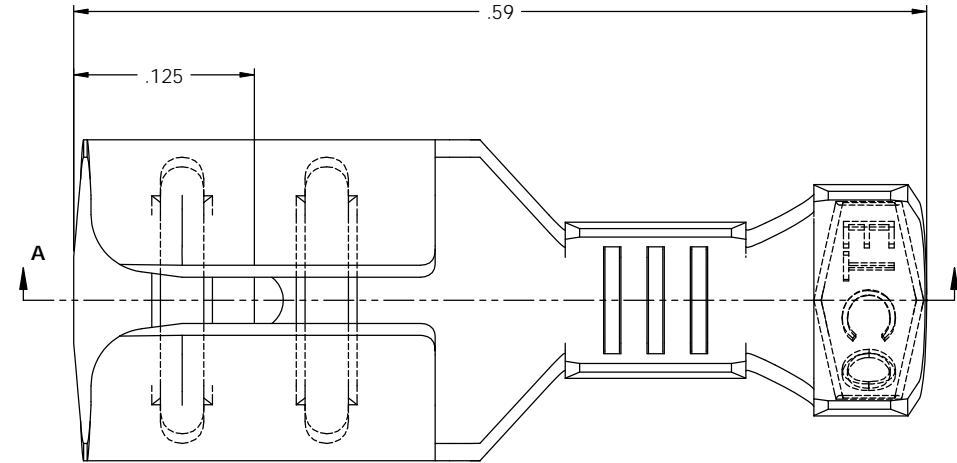


NOTE:

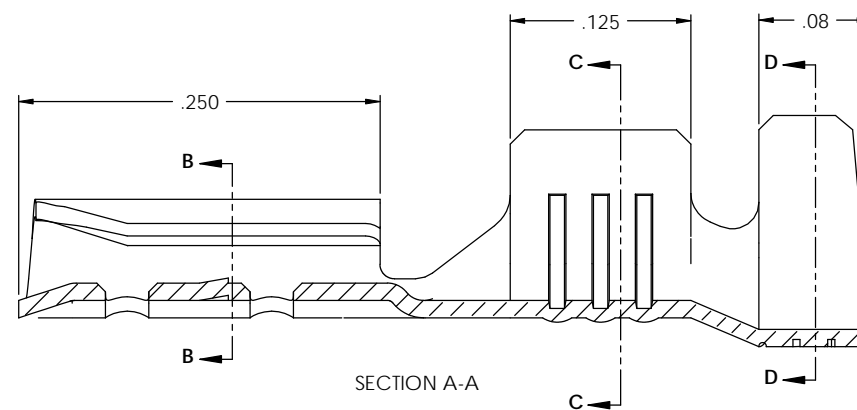
- 1.) MAT'L: .012 THK., BRASS, #4 TEMPER (FULL HARD), PER ETCO METAL CODE NO. 00046.
- 2.) MAT'L: .012 THK., PRE-TINNED BRASS, #4 TEMPER (FULL HARD), PER ETCO METAL CODE NO. 01066.
- 3.) MAT'L: .012 THK., PRE-NICKEL PLATED STEEL, #2 TEMPER (HALF HARD), PER ETCO METAL CODE NO. 03076.
- 4.) MAT'L: .012 THK., ALLOY C19025, #4 TEMPER (FULL HARD), TENSILE: 72,000-83,000 PSI, PER ETCO METAL CODE NO. 03014.
- 5.) PARTS MAY BE COATED WITH A LIGHT FILM OF LUBRICATION USED IN THE MANUFACTURING PROCESS.
- 6.) INSERTION/WITHDRAWAL FORCES ARE INDICATED ON THE QUALITY INSPECTION RECORD.
- 7.) MATING PART: .032 X .187 MALE.
- 8.) WIRE RANGE: 20-16 AWG.
- 9.) INSULATION RANGE: \varnothing .090-.130.

P/C	DESCRIPTION	MAT'L	UL	cUL
07374	D162E-N-HB	NOTE 1	X	X
07375	D162E-N-THB	NOTE 2	X	X
07376	D162E-N-NPS	NOTE 3		
07378	D162E-N-C19025	NOTE 4		

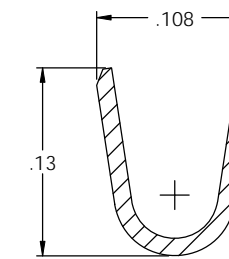
Rev.	Description of Change/ SCN#	Date
1	REDRAWN ON SOLIDWORKS NO CHANGES ORG.ENG.DWG.DATE: 1-30-97 SCJ	9-8-05



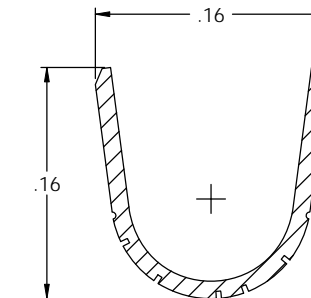
SECTION B-B



SECTION A-A



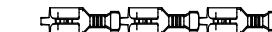
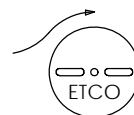
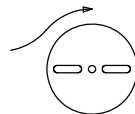
SECTION C-C



SECTION D-D



DIRECTION EXITING TOOL,
EARS UP, TO THE LEFT



DIRECTION TOWARD APPLICATOR,
EARS UP, TO THE RIGHT

UNCONTROLLED COPY

<p>THIRD ANGLE PROJECTION</p>	TOOL NO.	Title: .032 X .187 FEMALE DISCONNECT		
	0713	DO NOT SCALE DWG.	Drawn By: S.JOHNSON	Date: 9-8-05
<p>TOLERANCES UNLESS OTHERWISE SPECIFIED</p> <p>INCHES: XX - \pm .030</p> <p> XXX - \pm .015</p> <p>ANGLES: \pm 5°</p>		<p>ETCO Incorporated Engineered Products 25 Bellows Street Warwick, RI 02888 Phone: (401) 467-2400 Fax: (401) 467-9230 www.ETCO.com</p>	<p>Chk'd/App'd By:</p>	<p>Scale: 12X</p> <p>Size: C</p>
		<p>Dwg. No.: D162E-N cust</p>		