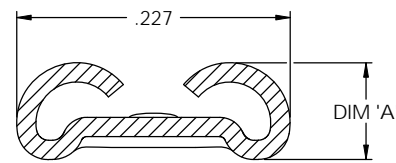
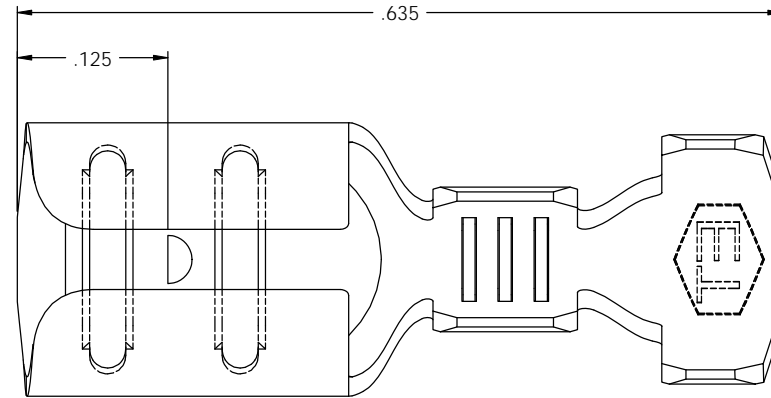


NOTES:

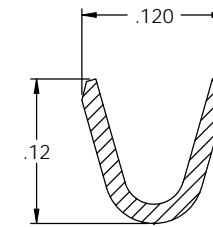
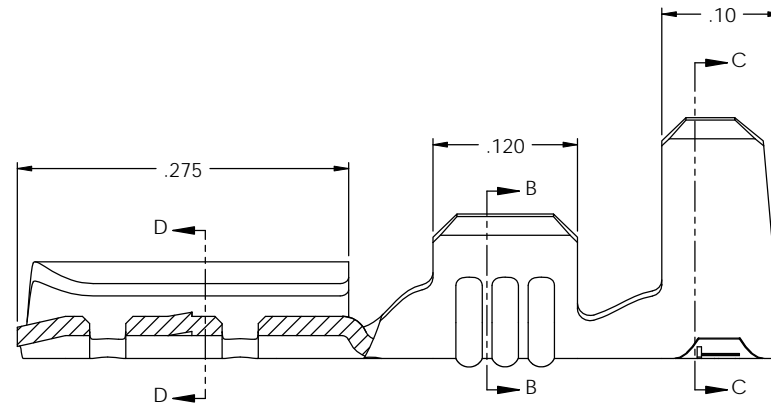
1. MATERIAL: .016 THICK BRASS  
#4 TEMPER (FULL HARD)  
PER ETCO METAL CODE 00196.
2. MATERIAL: .016 THICK PRE-TINNED BRASS  
#4 TEMPER (FULL HARD)  
PER ETCO METAL CODE 05245.
3. MATERIAL: .016 THICK NICKEL PLATED STEEL  
#2 TEMPER (1/2 HARD)  
PER ETCO METAL CODE 03156.
4. MATERIAL: .016 THICK NICKEL PLATED BRASS  
#4 TEMPER (FULL HARD)  
PER ETCO METAL CODE 03778.
5. PARTS MAY BE COATED WITH A LIGHT FILM OF LUBRICATION USED IN THE MANUFACTURING PROCESS.
6. INSERTION/WITHDRAWAL FORCES ARE INDICATED ON THE QUALITY INSPECTION PLAN.
7. ACCEPTED MALE: .020 X .187 NEMA STANDARD.
8. WIRE RANGE: 20-16 AWG.
9. INSULATION DIAMETER RANGE:  $\phi$ .090-.125.

P/C	DESCRIPTION	DIM 'A'	MAT'L	UL	SP
07456	D163E-N-NPHB	.094 ± .030	NOTE 4	X	X
07465	D163E-N-HB	.094 ± .030	NOTE 1	X	X
07466	D163E-N-THB	.094 ± .030	NOTE 2	X	X
07467	D163E-1-N-HB	.097 ± .030	NOTE 1		

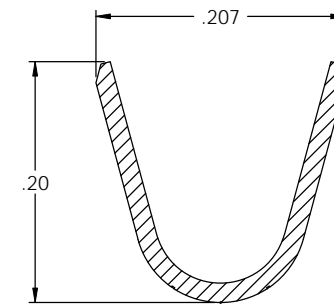
Rev.	Description of Change/ SCN#	Date
1	SCN#140337 SCJ ORG.ENG.DWG.DATE: 6-28-88	3-5-08



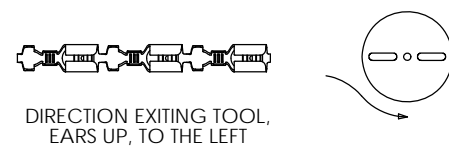
SECTION D-D  
SCALE 10 : 1



SECTION B-B  
SCALE 10 : 1



SECTION C-C  
SCALE 10 : 1



**UNCONTROLLED COPY**

<p>THIRD ANGLE PROJECTION</p>	<p>TOOL NO. 0618</p>	<p>Title: .020 X .187 FEMALE DISCONNECT</p>	
	<p>DO NOT SCALE DWG.</p>	<p>Drawn By: S.JOHNSON</p>	<p>Date: 3-5-08</p>
<p>TOLERANCES UNLESS OTHERWISE SPECIFIED</p> <p>INCHES: XX - ± .030 XXX - ± .015</p> <p>ANGLES: ± 5°</p>	<p>ETCO Incorporated Engineered Products 25 Bellows Street Warwick, RI 02888 Phone: (401) 467-2400 Fax: (401) 467-9230 www.ETCO.com</p>	<p>Chk'd/App'd By:</p>	<p>Scale: 10X</p> <p>Size: C</p>
		<p>Dwg. No.: D163E-N, D163E-1-N cust</p>	