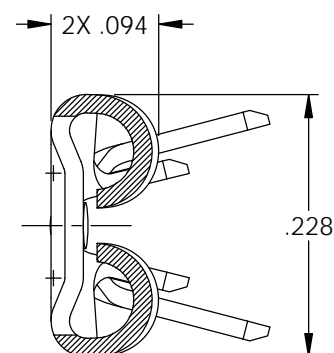
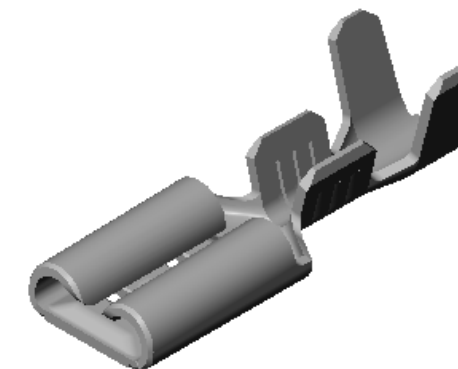


NOTES:

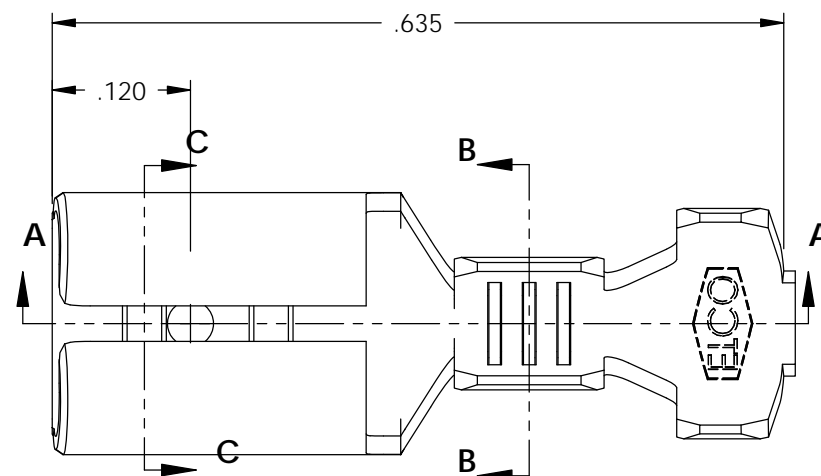
1. MATERIAL: .016 THICK BRASS, #4 TEMPER  
PER ETCO METAL CODE 00162.
2. MATERIAL: .016 THICK PRE-TINNED BRASS, #4 TEMPER  
PER ETCO METAL CODE 01232.
3. ACCEPTS NEMA STANDARD MALE TAB: SEE TABLE.
4. WIRE RANGE: #20-#16 AWG
5. INSULATION RANGE: .090-.130

P/C	DESCRIPTION	MALE TAB	MAT'L		
07339	D163N-HB	.187 X .020	NOTE 1	X	X
07341	D163N-THB	.187 X .020	NOTE 2	X	X
07348	D165N-HB	.187 X .032	NOTE 1	X	X
07349	D165N-THB	.187 X .032	NOTE 2	X	X

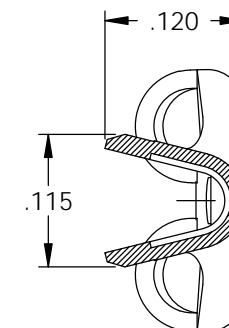
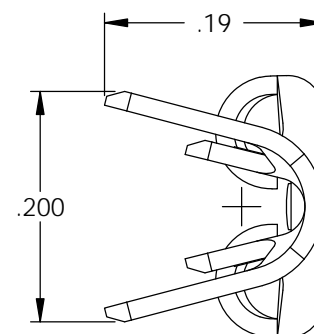
Rev.	Description of Change/ SCN#	Date
-	INITIAL RELEASE	11-5-03
1	Issued P/C's 07984 & 07985 SCJ	12-15-04
2	SCN# 103002 SCJ	6-29-05
3	ECR# 1692 SCJ	9/28/12



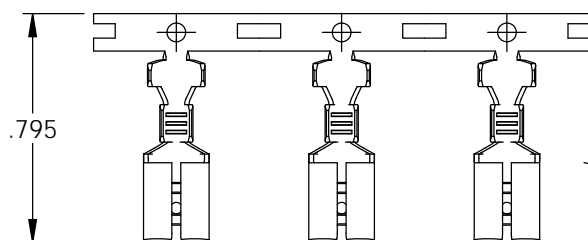
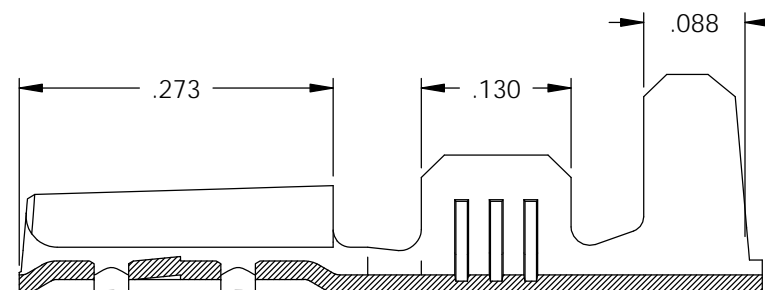
SECTION C-C



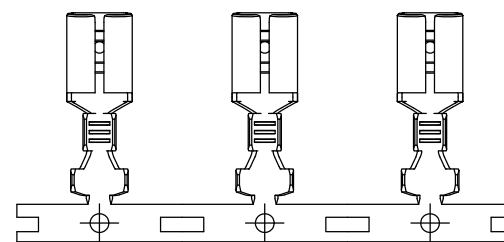
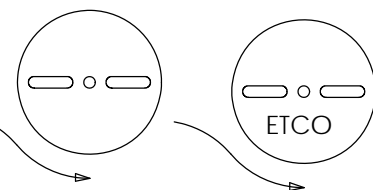
SECTION A-A



SECTION B-B



DIRECTION EXITING THE TOOL  
EARS UP TO THE BACK



DIRECTION TOWARD APPLICATOR  
EARS UP TO THE FRONT

THIS PRINT IS THE PROPERTY OF ETCO INCORPORATED. NO PART OF THIS DESIGN MAY BE USED IN ANY WAY WITHOUT WRITTEN CONSENT FROM ETCO INCORPORATED.

# UNCONTROLLED COPY

 THIRD ANGLE PROJECTION TOLERANCES UNLESS OTHERWISE SPECIFIED INCHES: .XX - ±.030 .XXX - ±.015 ANGLES: ±5°	TOOL NO. <b>0798</b>	Title: <b>3/16" IN-LINE DISCONNECT</b>	
		DO NOT SCALE DWG.	Drawn By: S.JOHNSON Date: 11-5-03
ETCO Incorporated Engineered Products 25 Bellows Street Warwick, RI 02888 Phone: (401) 467-2400 Fax: (401) 467-9230 www.ETCO.com		Chk'd/App'd By:	Scale: 6X Size B
Dwg. No.: <b>D163N &amp; D165N cust</b>			