
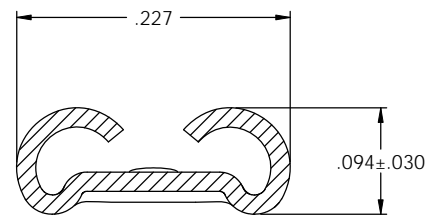
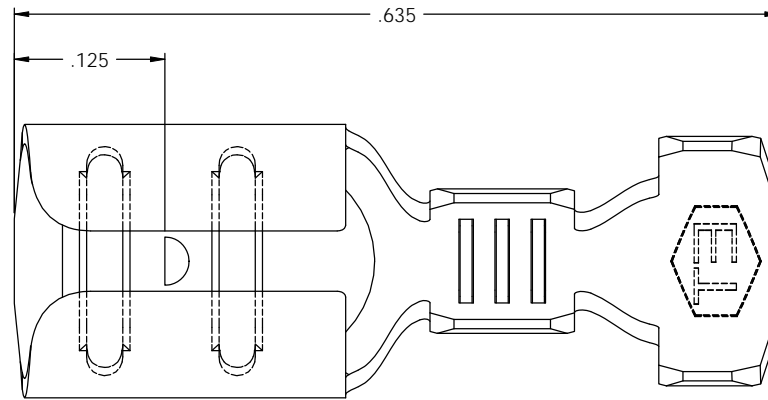


NOTES:

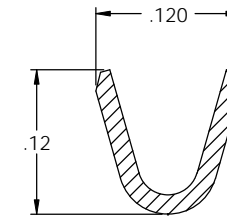
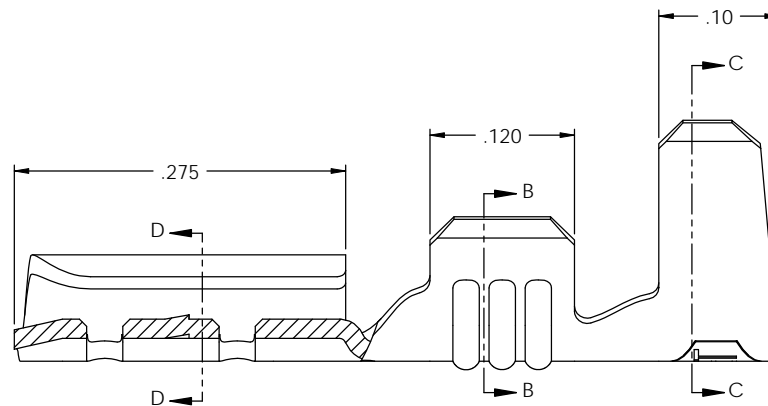
1. MATERIAL: .016 THICK BRASS  
#4 TEMPER (FULL HARD)  
PER ETCO METAL CODE 00196.
2. MATERIAL: .016 THICK PRE-TINNED BRASS  
#4 TEMPER (FULL HARD)  
PER ETCO METAL CODE 05245.
3. MATERIAL: .016 THICK NICKEL PLATED STEEL  
#2 TEMPER (1/2 HARD)  
PER ETCO METAL CODE 03156.
4. PARTS MAY BE COATED WITH A LIGHT FILM OF LUBRICATION USED IN THE MANUFACTURING PROCESS.
5. INSERTION/WITHDRAWAL FORCES ARE INDICATED ON THE QUALITY INSPECTION PLAN.
6. ACCEPTED MALE: .032 X .187 NEMA STANDARD.
7. WIRE RANGE: 20-16 AWG.
8. INSULATION DIAMETER RANGE:  $\varnothing$ .090-.125.

P/C	DESCRIPTION	MAT'L	
07446	D165E-HB	NOTE 1	
07447	D165E-THB	NOTE 2	
07448	D165E-NPS	NOTE 3	X

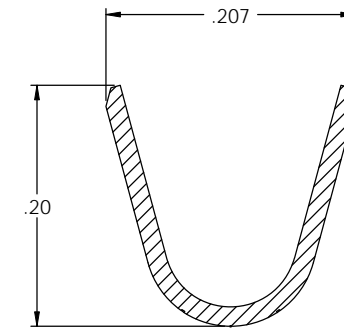
Rev.	Description of Change/ SCN#	Date
2	SCN#140337 SCJ ORG.ENG.DWG.DATE: 1-5-87	3-5-08



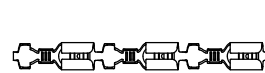
SECTION D-D  
SCALE 10 : 1



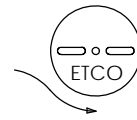
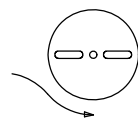
SECTION B-B  
SCALE 10 : 1



SECTION C-C  
SCALE 10 : 1





DIRECTION EXITING TOOL,  
EARS UP, TO THE LEFT



DIRECTION TOWARD APPLICATOR,  
EARS UP, TO THE RIGHT



**UNCONTROLLED COPY**

 THIRD ANGLE PROJECTION	TOOL NO.	Title: .032 X .187 FEMALE DISCONNECT		
	<b>0618</b>	DO NOT SCALE DWG.	Drawn By: S.JOHNSON	Date: 3-5-08
TOLERANCES UNLESS OTHERWISE SPECIFIED INCHES: XX - ±.030 XXX - ±.015 ANGLES: ±5°		ETCO Incorporated Engineered Products 25 Bellows Street Warwick, RI 02888 Phone: (401) 467-2400 Fax: (401) 467-9230 www.ETCO.com	Chk'd/App'd By:	Scale: 10X Size: C
		Dwg. No.: D165E cust		