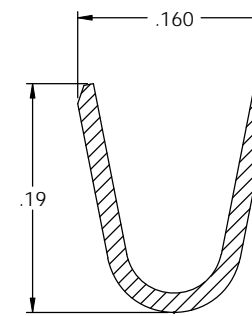
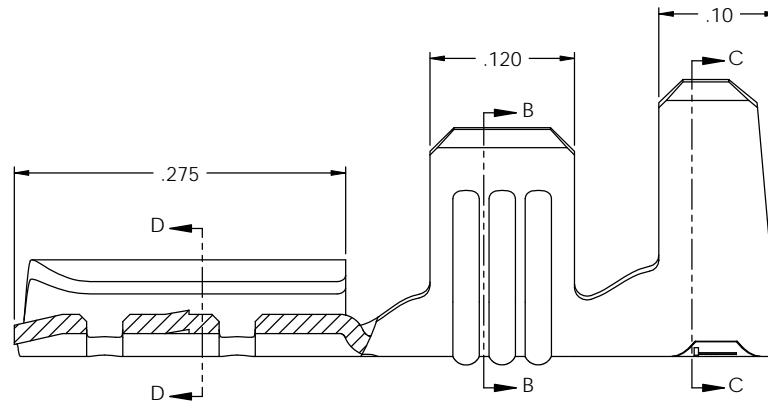
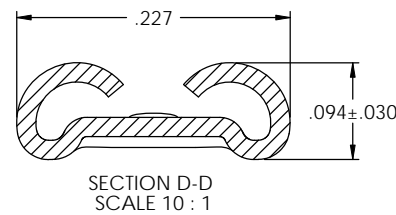
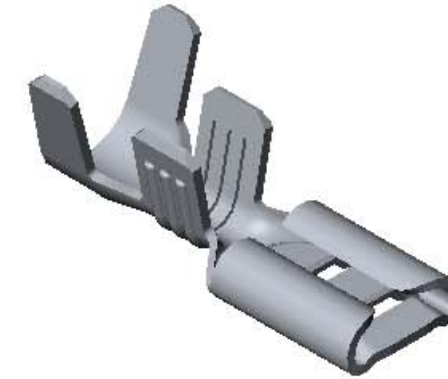
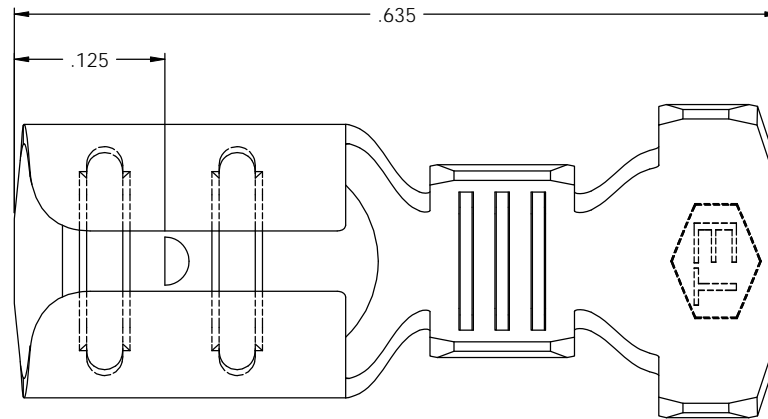


NOTES:

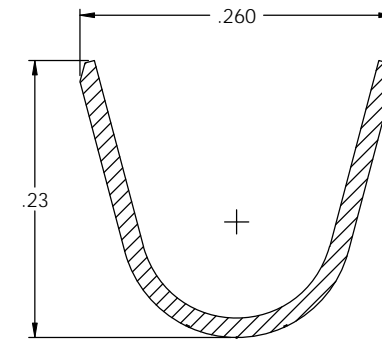
1. MATERIAL: .016 THICK BRASS  
#4 TEMPER (FULL HARD)  
PER ETCO METAL CODE 00196.
2. MATERIAL: .016 THICK PRE-TINNED BRASS  
#4 TEMPER (FULL HARD)  
PER ETCO METAL CODE 05245.
3. MATERIAL: .016 THICK NICKEL PLATED STEEL  
#2 TEMPER (1/2 HARD)  
PER ETCO METAL CODE 03156.
4. PARTS MAY BE COATED WITH A LIGHT FILM OF LUBRICATION USED IN THE MANUFACTURING PROCESS.
5. INSERTION/WITHDRAWAL FORCES ARE INDICATED ON THE QUALITY INSPECTION PLAN.
6. ACCEPTED MALE: .020 X .187 NEMA STANDARD.
7. WIRE RANGE: 16-14 AWG.
8. INSULATION DIAMETER RANGE:  $\varnothing$  120-.170.

P/C	DESCRIPTION	MAT'L
07394	D166E-N-HB	NOTE 1
07401	D166E-N-THB	NOTE 2
07839	D166E-N-NPS	NOTE 3

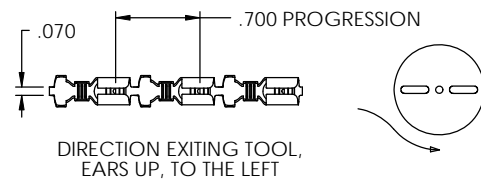
Rev.	Description of Change/ SCN#	Date
1	SCN#140337 SCJ ORG.ENG.DWG.DATE: 4-21-93	2-28-08



SECTION B-B  
SCALE 10 : 1



SECTION C-C  
SCALE 10 : 1



**UNCONTROLLED COPY**

 THIRD ANGLE PROJECTION	TOOL NO. <b>0618</b>	Title: .020 X .187 FEMALE DISCONNECT	
	TOLERANCES UNLESS OTHERWISE SPECIFIED INCHES: XX - ± .030 XXX - ± .015 ANGLES: ± 5°	ETCO Incorporated Engineered Products 25 Bellows Street Warwick, RI 02888 Phone: (401) 467-2400 Fax: (401) 467-9230 www.ETCO.com	DO NOT SCALE DWG. Drawn By: S.JOHNSON Chk'd/App'd By:
		Dwg. No.: D166E-N cust	