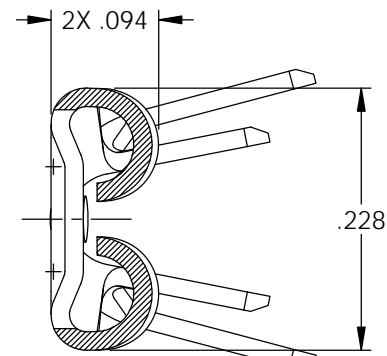
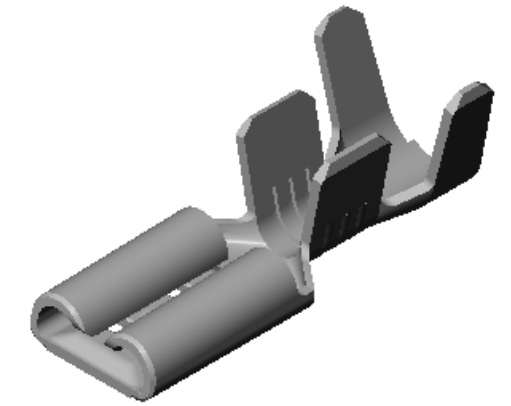


NOTES:

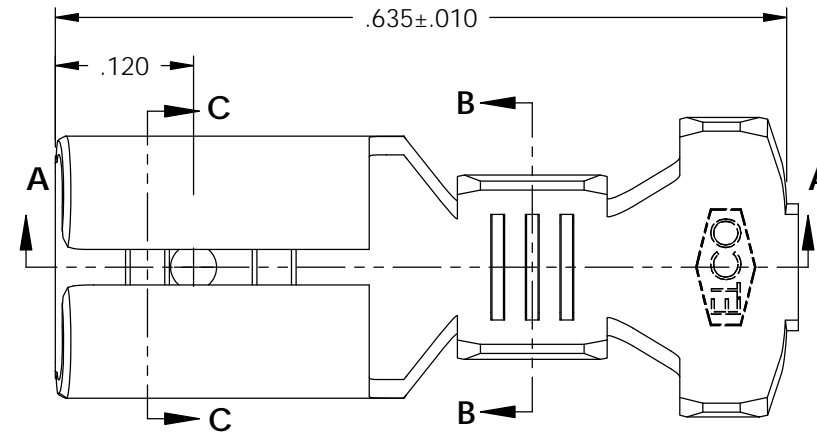
1. MATERIAL: .016 THICK BRASS, #4 TEMPER  
PER ETCO METAL CODE 00162.
2. MATERIAL: .016 THICK PRE-TINNED BRASS, #4 TEMPER  
PER ETCO METAL CODE 01232.
3. ACCEPTS NEMA STANDARD MALE TAB: SEE TABLE.
4. WIRE RANGE: #16-#14 AWG
5. INSULATION RANGE:  $\phi$ .120-.170

P/C	DESCRIPTION	MALE TAB	MAT'L
07959	D166N-HB	.187 X .020	NOTE 1
07958	D166N-THB	.187 X .020	NOTE 2
07962	D168N-HB	.187 X .032	NOTE 1
07963	D168N-THB	.187 X .032	NOTE 2

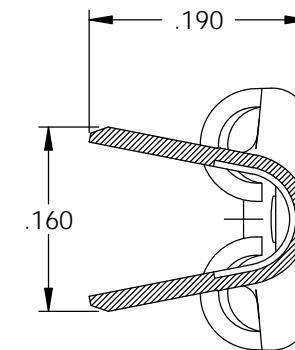
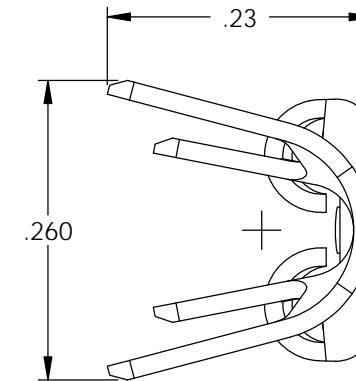
Rev.	Description of Change/ SCN#	Date
-	INITIAL RELEASE	11-5-03
1	ISSUED P/C's 07986 & 07987 SCJ	12-15-04
2	SCN# 103002 SCJ	6-29-05
3	ECR# 1692 SCJ	9/28/12
3	ECR# 3797 SCJ	7/20/15



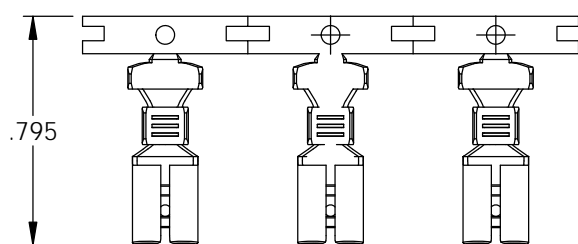
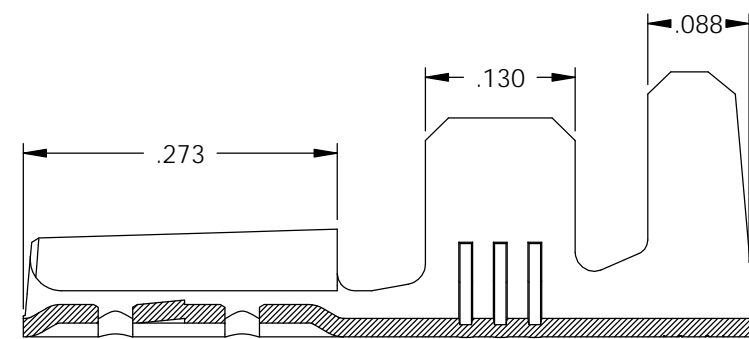
SECTION C-C



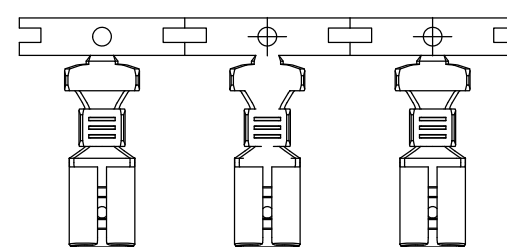
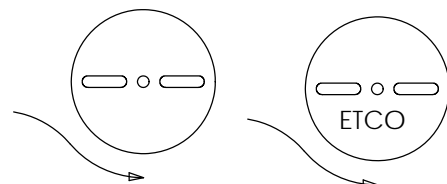
SECTION A-A



SECTION B-B



DIRECTION EXITING THE TOOL  
EARS UP TO THE BACK



DIRECTION TOWARD APPLICATOR  
EARS UP TO THE FRONT

# UNCONTROLLED COPY

THIRD ANGLE PROJECTION  
TOLERANCES UNLESS OTHERWISE SPECIFIED  
INCHES: .XX - ±.030  
.XXX - ±.015  
ANGLES: ±5°

TOOL NO.  
**0798**



Title: **3/16" IN-LINE DISCONNECT**

DO NOT SCALE DWG.

ETCO Incorporated  
Engineered Products  
25 Bellows Street  
Warwick, RI 02888  
Phone: (401) 467-2400  
Fax: (401) 467-9230  
www.ETCO.com

Drawn By: **S.JOHNSON**

Chk'd/App'd By:

Scale:  
**6X**

Date: **11-5-03**

Size  
**B**

Dwg. No.:  
**D166N & D168N cust**