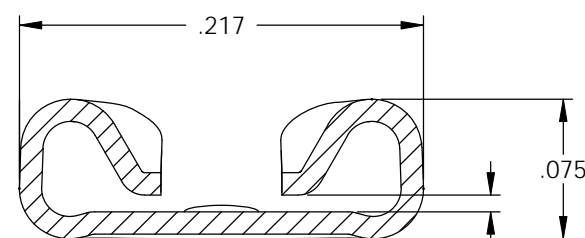
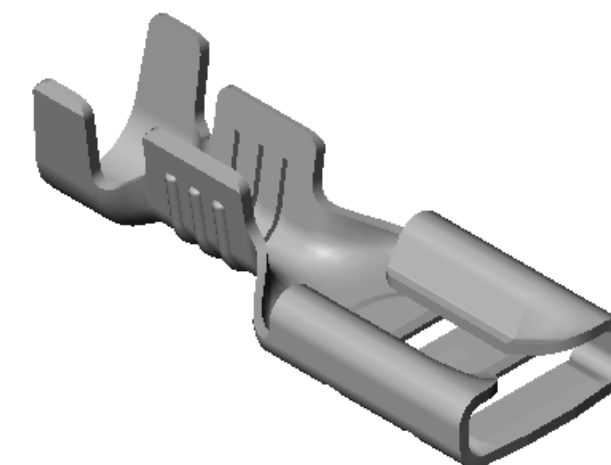
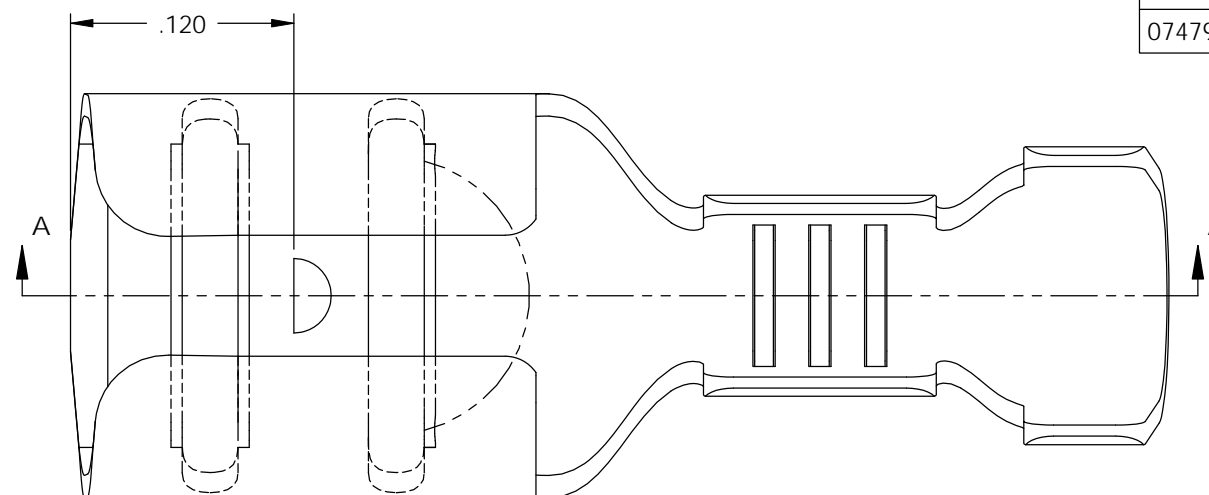


NOTES:

1. MATERIAL: .012 THICK, BRASS, #4 TEMPER (FULL HARD), PER ETCO METAL CODE 00051.
2. MATERIAL: .012 THICK, PRE-TINNED BRASS, #4 TEMPER (FULL HARD), PER ETCO METAL CODE 01033.
3. MATERIAL: .012 THICK, NICKEL PLATED STEEL, #2 TEMPER (1/2 HARD), PER ETCO METAL CODE 03073.
4. PARTS MAY BE COATED WITH A LIGHT FILM OF LUBRICATION USED IN THE MANUFACTURING PROCESS.
5. INSERTION/WITHDRAWAL FORCES ARE INDICATED ON THE QUALITY INSPECTION PLAN.
6. ACCEPTS .012 X .187 MALE.
7. WIRE RANGE: 20-16 AWG.
8. INSUL RANGE: \varnothing .090-.130

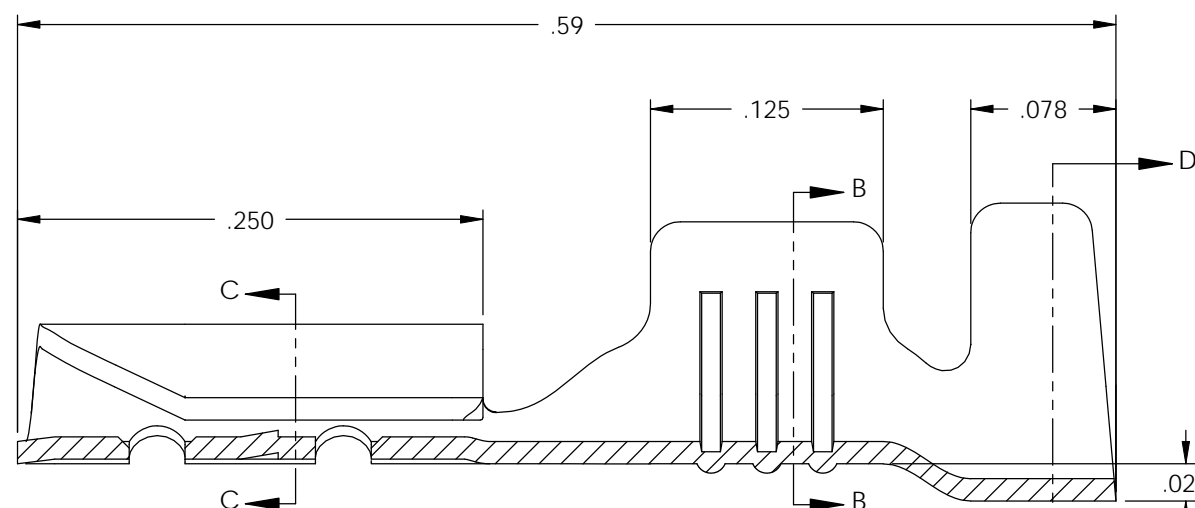
P/C	DESCRIPTION	MAT'L
07472	D167E-THB	NOTE 2
07473	D167E-NPS	NOTE 3
07479	D167E-HB	NOTE 1

Rev.	Description of Change/ SCN#	Date
1	SCN# 140317 SCJ ORG.ENG.DWG.DATE: 3-12-82	1-23-08

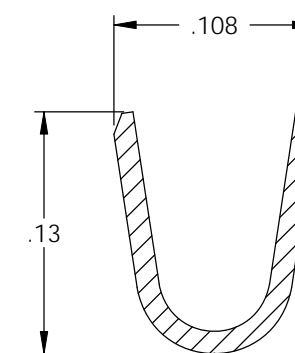


SECTION C-C
SCALE 10 : 1

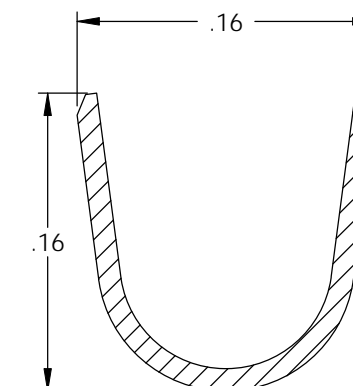
SEE NOTE 6



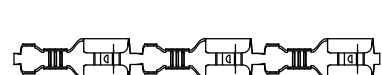
SECTION A-A
SCALE 10 : 1



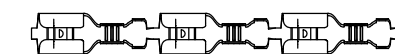
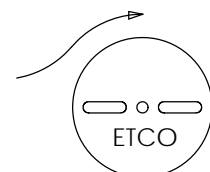
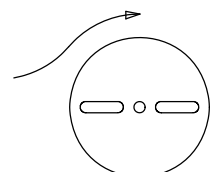
SECTION B-B
SCALE 10 : 1



SECTION D-D
SCALE 10 : 1



DIRECTION EXITING TOOL,
EARS UP, TO THE LEFT



DIRECTION TOWARD APPLICATOR,
EARS UP, TO THE RIGHT

THIS PRINT IS THE PROPERTY OF ETCO INCORPORATED. NO PART OF THIS DESIGN MAY BE USED IN ANY WAY WITHOUT WRITTEN CONSENT FROM ETCO INCORPORATED.

UNCONTROLLED COPY

<p>THIRD ANGLE PROJECTION TOLERANCES UNLESS OTHERWISE SPECIFIED INCHES: .XX - \pm.030 .XXX - \pm.015 ANGLES: \pm5°</p>	<p>TOOL NO. 0103</p>	<p>Title: .012 X .187 FEMALE DISCONNECT</p>		
		<p>DO NOT SCALE DWG.</p>	<p>Drawn By: S.JOHNSON</p>	<p>Date: 1-23-08</p>
<p>ETCO Incorporated Engineered Products 25 Bellows Street Warwick, RI 02888 Phone: (401) 467-2400 Fax: (401) 467-9230 www.ETCO.com</p>		<p>Chk'd/App'd By:</p>	<p>Scale: 10X</p>	<p>Size B</p>
		<p>Dwg. No.:</p>	<p>D167E cust</p>	