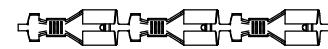
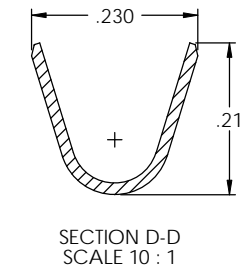
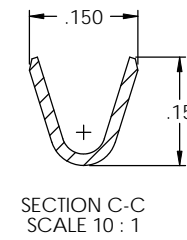
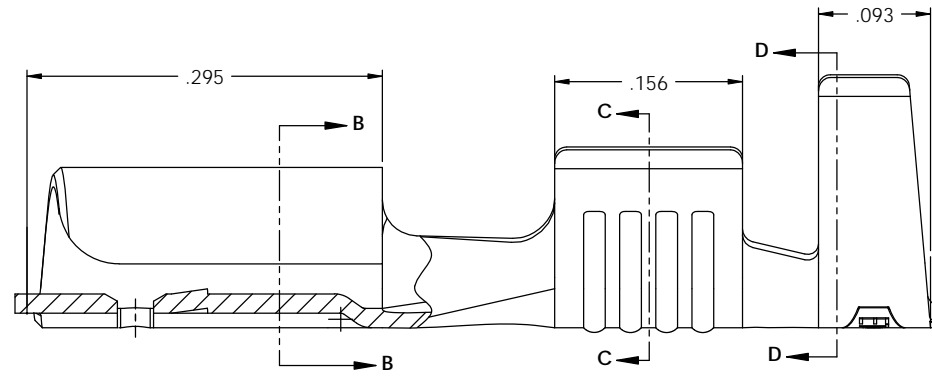
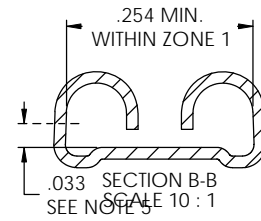
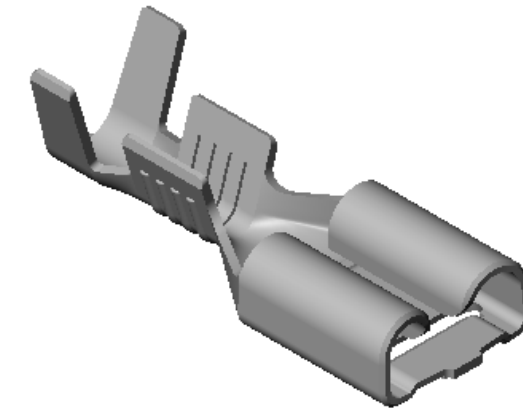
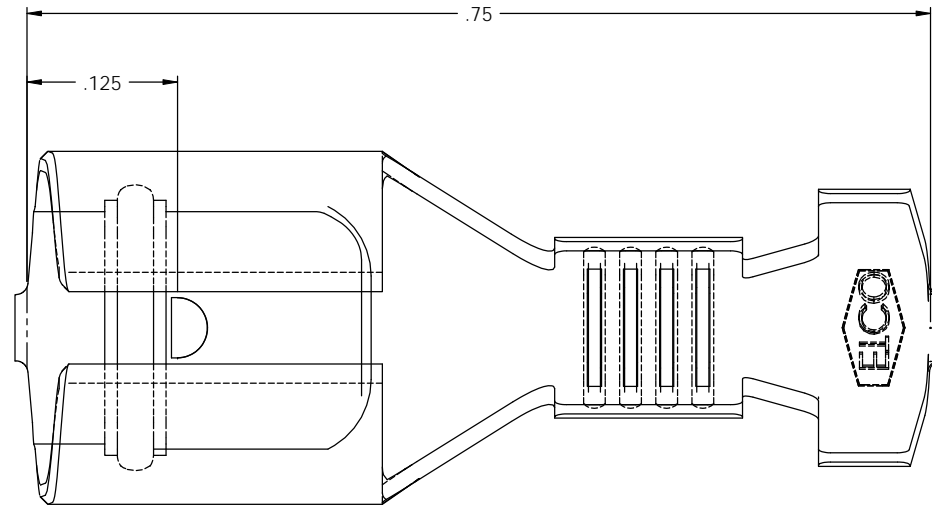


NOTE:

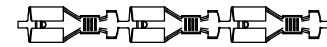
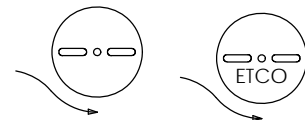
- 1.) MAT'L: .016 THK., BRASS, #4 TEMPER (FULL HARD), PER ETCO METAL CODE NO. 05055.
- 2.) MAT'L: .016 THK., PRE-TINNED BRASS, #4 TEMPER (FULL HARD), PER ETCO METAL CODE NO. 05255.
- 3.) PARTS MAY BE COATED WITH A LIGHT FILM OF LUBRICATION USED IN THE MANUFACTURING PROCESS.
- 4.) INSERTION/WITHDRAWAL FORCES ARE INDICATED ON THE QUALITY INSPECTION RECORD.
- 5.) ACCEPTS .032 X .250 STANDARD NEMA MALE.
- 6.) WIRE RANGE: 18-14 AWG.
- 7.) INSUL RANGE: Ø .130-.180

P/C	DESCRIPTION	MAT'L	UL	CSA
07658	D260E-N-HB	NOTE 1	X	X
07659	D260E-N-THB	NOTE 2	X	X

Rev.	Description of Change/ SCN#	Date
1	REDRAWN ON SOLIDWORKS NO CHANGES SCJ ORG.ENG.DWG.DATE: 6-26-91	4-1-03



DIRECTION EXITING TOOL,
EARS UP, TO THE LEFT



DIRECTION TOWARD APPLICATOR,
EARS UP, TO THE RIGHT

UNCONTROLLED COPY

<p>THIRD ANGLE PROJECTION</p>	TOOL NO.	Title: .032 X .250 FEMALE DISCONNECT		
	0628	DO NOT SCALE DWG.	Date: 11-9-04	
<p>TOLERANCES UNLESS OTHERWISE SPECIFIED</p> <p>INCHES: XX - ±.030 XXX - ±.015</p> <p>ANGLES: ±5°</p>	<p>ETCO Incorporated Engineered Products 25 Bellows Street Warwick, RI 02888 Phone: (401) 467-2400 Fax: (401) 467-9230 www.ETCO.com</p>	<p>Chk'd/App'd By:</p>	<p>Scale: 10X</p>	<p>Size: C</p>
	<p>Dwg. No.: D260E-N cust</p>			