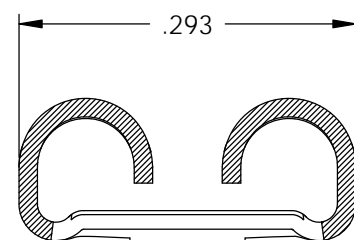
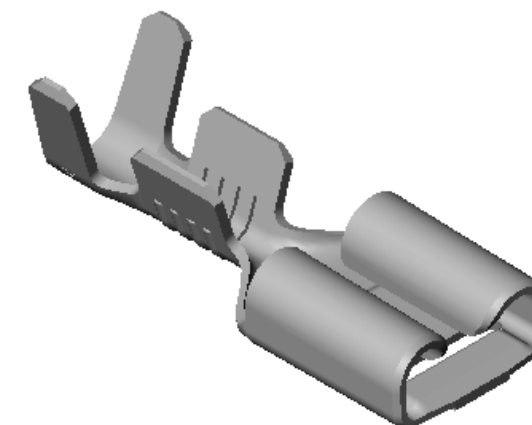
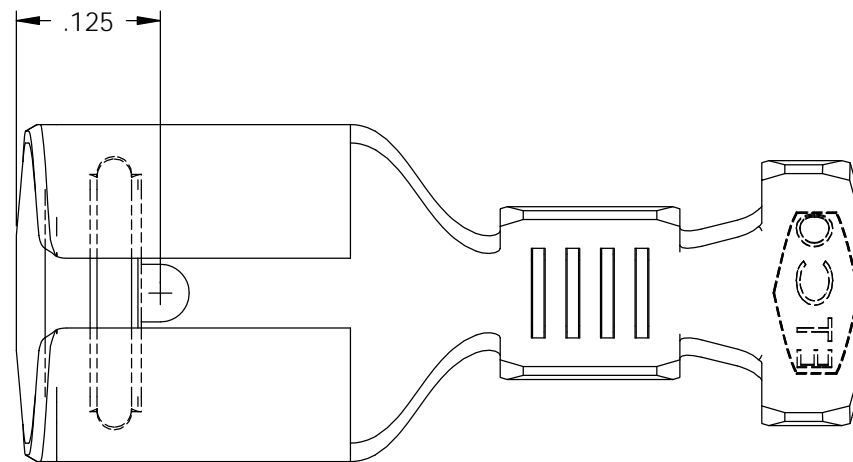


NOTES:

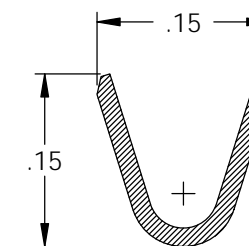
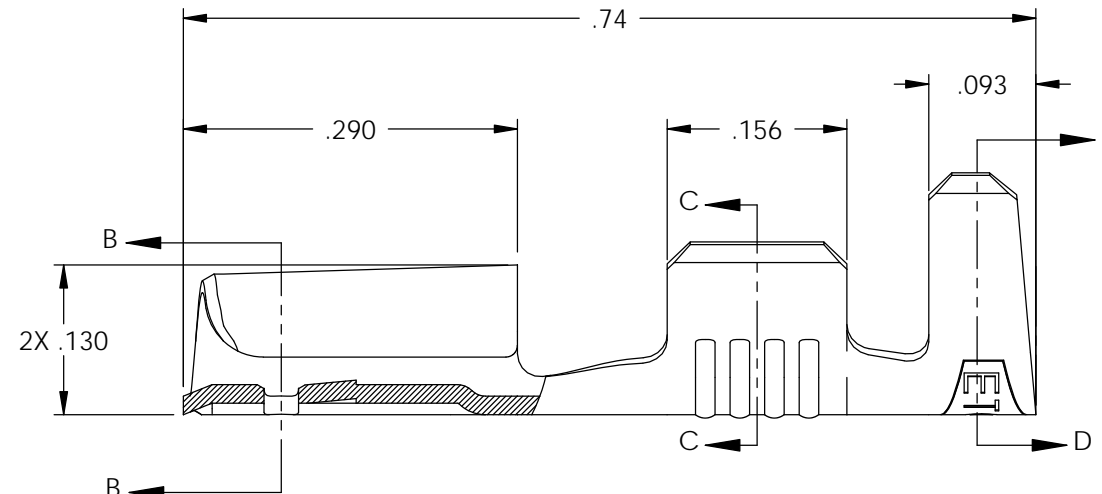
- MATERIAL: .016 THICK BRASS
#4 TEMPER (FULL HARD)
PER ETCO METAL CODE 00184.
- MATERIAL: .016 THICK PRE-TINNED BRASS
#4 TEMPER (FULL HARD)
PER ETCO METAL CODE 01248.
- PARTS MAY BE COATED WITH A LIGHT FILM OF LUBRICATION USED IN THE MANUFACTURING PROCESS.
- INSERTION/WITHDRAWAL FORCES ARE INDICATED ON THE QUALITY INSPECTION PLAN.
- ALL CORNERS SHOWN MAY HAVE A .010 MAX RAD.
- ACCEPTS MALE TAB: .032 X .250
- WIRE RANGE: 14-18 AWG.
- INSULATION RANGE: ϕ .100- ϕ .180.

P/C	DESCRIPTION	MAT'L	UL	SP
07726	D260N-HB	NOTE 1	X	X
07727	D260N-THB	NOTE 2	X	X

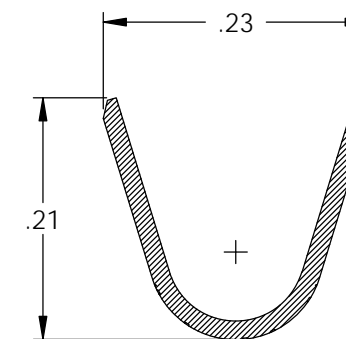
Rev.	Description of Change/ SCN#	Date
4	REMODELED IN SOLIDWORKS ADDED DIMS ORG.ENG.DWG.DATE: 11-30-01	1-10-07
5	SCN# 140106	1-25-07
6	ECR# 2000	2-25-13
6	ECR# 3797	7/20/15
6	Added 07365	9/14/15
6	Removed 07365	12/14/15
7	ECR# 4131	3/03/16
7	ECR# 5430	2/12/19



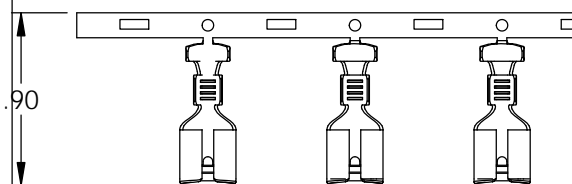
SECTION B-B
SCALE 6 : 1



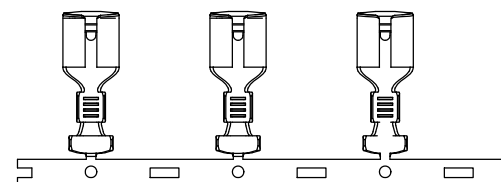
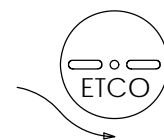
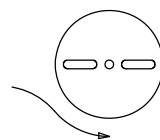
SECTION C-C
SCALE 6 : 1



SECTION D-D
SCALE 6 : 1



DIRECTION EXITING TOOL,
EARS UP, TO THE BACK



DIRECTION TOWARD APPLICATOR
EARS UP, TO THE FRONT,
FOR PARTS NOT INSULATED

UNCONTROLLED COPY

<p>THIRD ANGLE PROJECTION TOLERANCES UNLESS OTHERWISE SPECIFIED INCHES: .XX - \pm.030 .XXX - \pm.015 ANGLES: \pm5°</p>	<p>TOOL NO. 0660 0792</p>	<p>Title: .032 X .250 FEMALE DISCONNECT</p>		
		<p>DO NOT SCALE DWG.</p>	<p>Drawn By: S.Johnson</p>	<p>Date: 1-10-07</p>
<p>ETCO Incorporated Engineered Products 25 Bellows Street Warwick, RI 02888 Phone: (401) 467-2400 Fax: (401) 467-9230 www.ETCO.com</p>		<p>Chk'd/App'd By:</p>	<p>Scale: 4X</p>	<p>Size B</p>
		<p>Dwg. No.: D260N cust</p>		