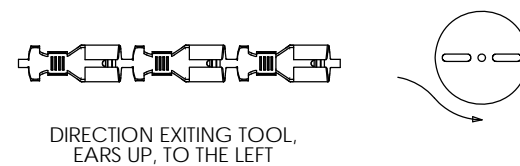
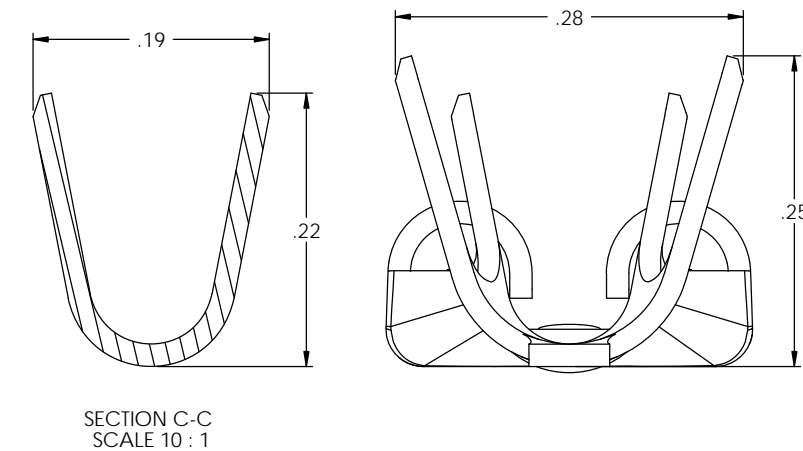
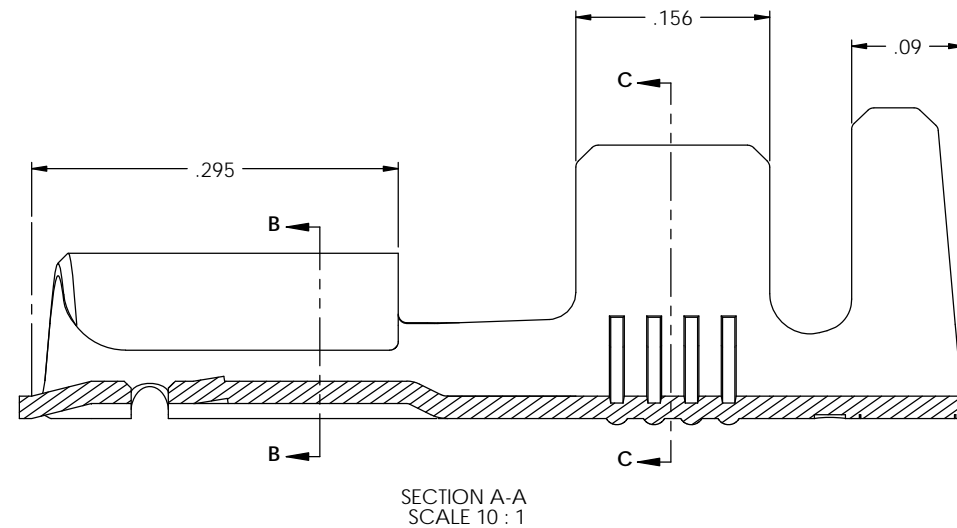
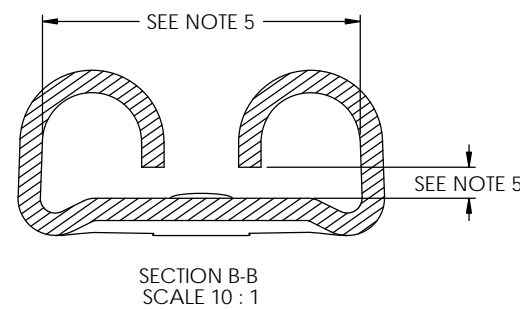
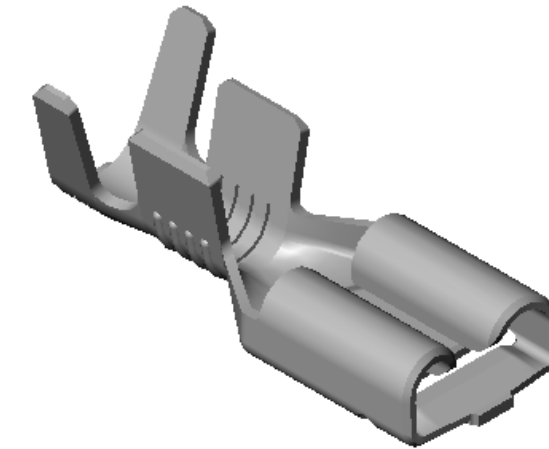
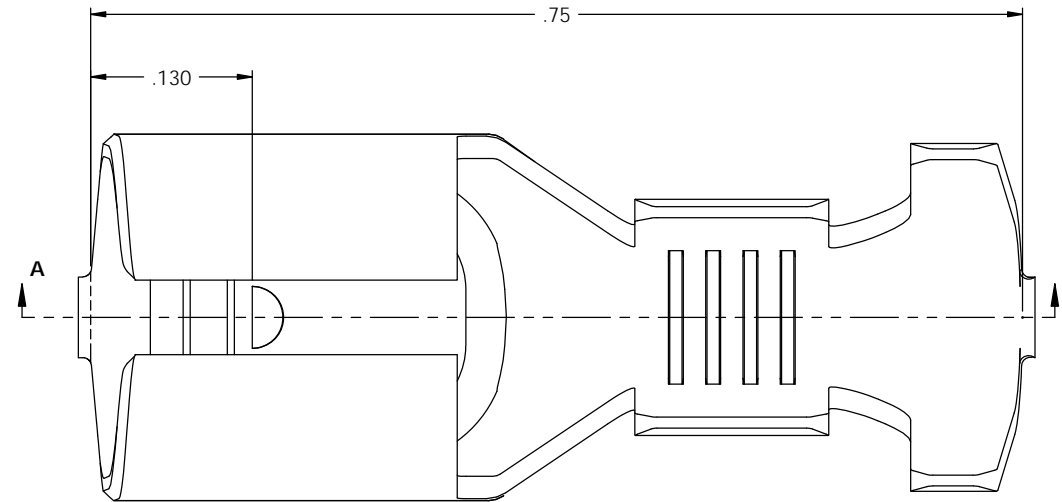


- NOTE:
- MAT'L: .018 THK., BRASS, #4 TEMPER (FULL HARD), PER ETCO METAL CODE NO. 00243.
 - MAT'L: .018 THK., PRE-TINNED BRASS, #4 TEMPER (FULL HARD), PER ETCO METAL CODE NO. 01291.
 - PARTS MAY BE COATED WITH A LIGHT FILM OF LUBRICATION USED IN THE MANUFACTURING PROCESS.
 - INSERTION/WITHDRAWAL FORCES ARE INDICATED ON THE QUALITY INSPECTION RECORD.
 - ACCEPTS .032 X .250 NEMA STANDARD MALE.
 - WIRE RANGE: 14-10 AWG. (3)
 - INSUL RANGE: ϕ .125-.200.

P/C	DESCRIPTION	MAT'L	UL	SP
07655	D263E-HB	NOTE 1	X	X
07656	D263E-THB	NOTE 2	X	X

Rev.	Description of Change/ SCN#	Date
1	REDRAWN ON SOLIDWORKS NO CHANGES ORG. ENG. DWG. DATE: 12-9-92	11-9-04
2	SCN# 140277 SCJ	10-24-07
3	ECR# 4160 SCJ	4/04/16



UNCONTROLLED COPY					
 THIRD ANGLE PROJECTION	TOOL NO. 0575	Title: .032 X .250 FEMALE DISCONNECT			
		DO NOT SCALE DWG.	Drawn By: S. Johnson	Date: 11-9-04	
TOLERANCES UNLESS OTHERWISE SPECIFIED INCHES: .XX - \pm .030 .XXX - \pm .015 ANGLES: \pm 5°	 ETCO	ETCO Incorporated Engineered Products 25 Bellows Street Warwick, RI 02888 Phone: (401) 467-2400 Fax: (401) 467-9230 www.ETCO.com	Chk'd/App'd By:	Scale: 10X	Size: C
D263E cust					