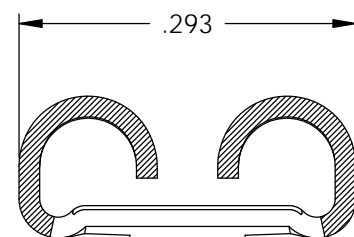
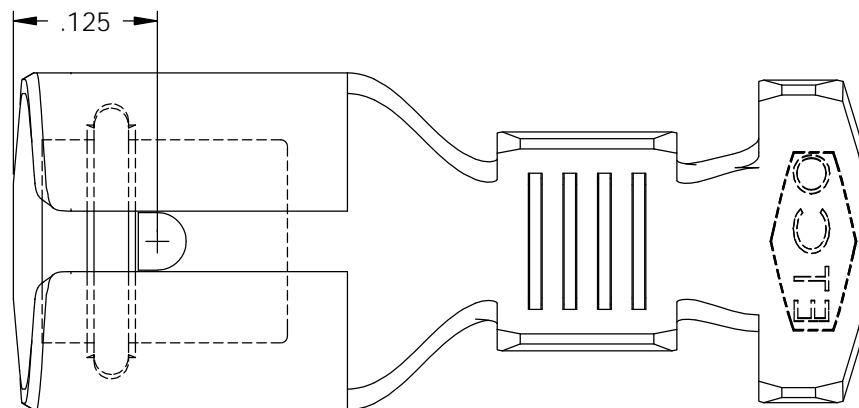
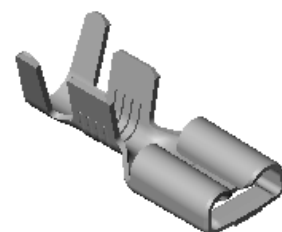
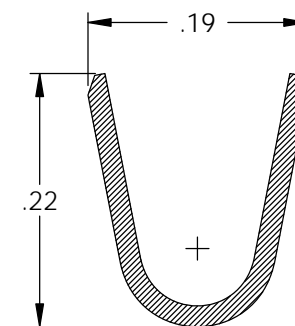
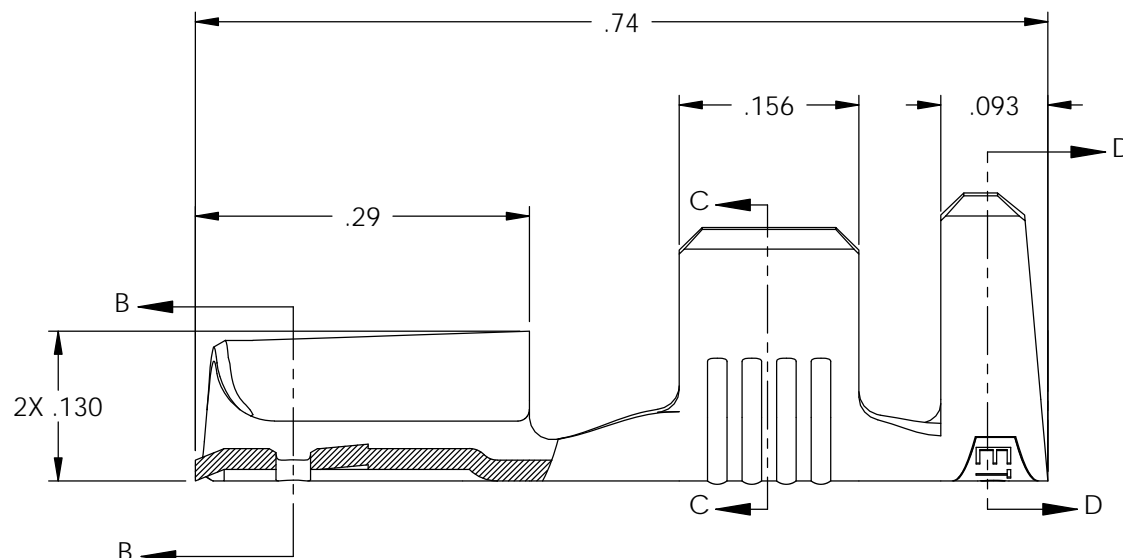


NOTES:

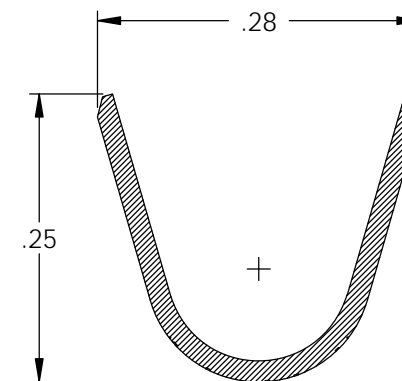
1. MATERIAL: .018 THICK BRASS
#4 TEMPER (FULL HARD)
PER ETCO METAL CODE 00231.
2. MATERIAL: .018 THICK PRE-TINNED BRASS
#4 TEMPER (FULL HARD)
PER ETCO METAL CODE 01292.
3. PARTS MAY BE COATED WITH A LIGHT FILM OF LUBRICATION USED IN THE MANUFACTURING PROCESS.
4. INSERTION/WITHDRAWAL FORCES ARE INDICATED ON THE QUALITY INSPECTION PLAN.
5. ALL CORNERS SHOWN MAY HAVE A .010 MAX RAD.
6. ACCEPTS MALE TAB: .032 X .250
7. WIRE RANGE: 10-14 AWG.
8. INSULATION RANGE: ϕ .125- ϕ .200.



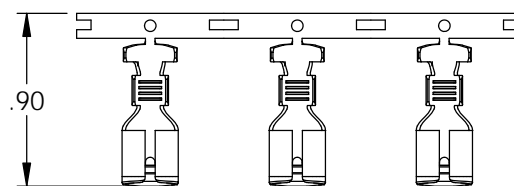
SECTION B-B
SCALE 6 : 1



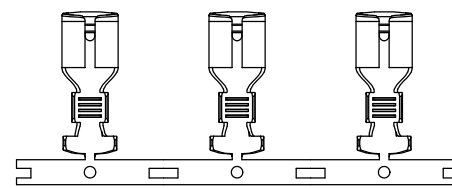
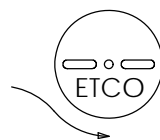
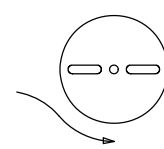
SECTION C-C
SCALE 6 : 1



SECTION D-D
SCALE 6 : 1



DIRECTION EXITING TOOL,
EARS UP, TO THE BACK



DIRECTION TOWARD APPLICATOR
EARS UP, TO THE FRONT,
FOR PARTS NOT INSULATED

P/C	DESCRIPTION	MAT'L		
07956	D263N-HB	NOTE 1	X	X
07957	D263N-THB	NOTE 2	X	X

Rev.	Description of Change/ SCN#	Date
1	INITIAL RELEASE SCJ	1-10-07

UNCONTROLLED COPY

 THIRD ANGLE PROJECTION TOLERANCES UNLESS OTHERWISE SPECIFIED INCHES: .XX - \pm .030 .XXX - \pm .015 ANGLES: \pm 5°	TOOL NO. 0797	Title: .032 X .250 FEMALE DISCONNECT	
		DO NOT SCALE DWG. Drawn By: S.Johnson Date: 1-10-07	Chk'd/App'd By: Scale: 6X Size: B
		Dwg. No.: D263N cust	
		ETCO Incorporated Engineered Products 25 Bellows Street Warwick, RI 02888 Phone: (401) 467-2400 Fax: (401) 467-9230 www.ETCO.com	