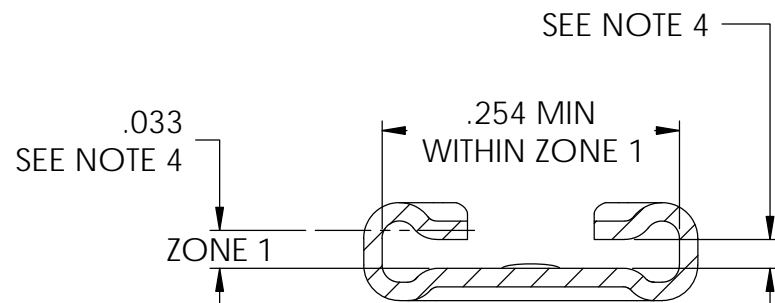
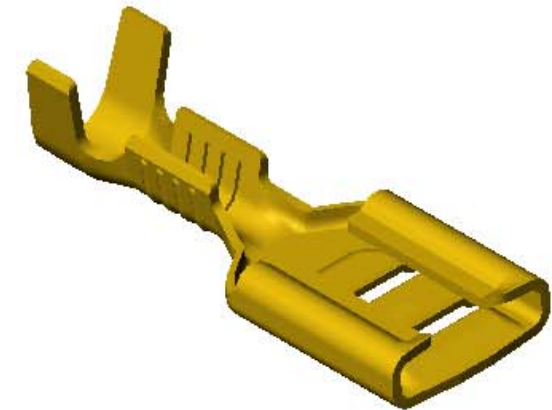
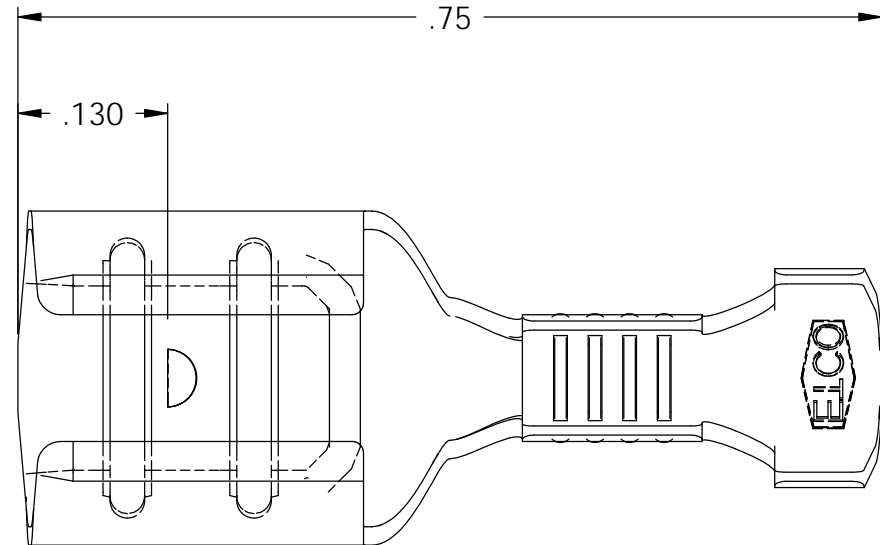


NOTE:

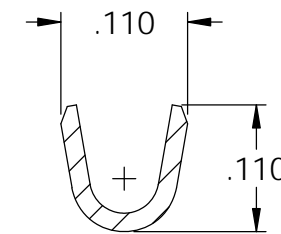
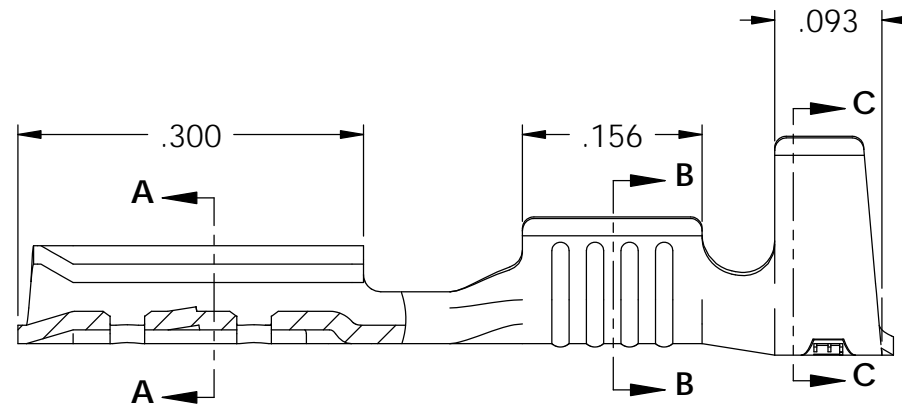
- 1.) MAT'L: .016 THK., BRASS, #4 TEMPER (FULL HARD), PER ETCO METAL CODE NO. 05044.
- 2.) MAT'L: .016 THK., PRE-TINNED BRASS, #4 TEMPER (FULL HARD), PER ETCO METAL CODE NO. 05244.
- 3.) MAT'L: .016 THK., PRE-NICKEL PLATED STEEL, #2 TEMPER (HALF HARD), PER ETCO METAL CODE NO. 03153.
- 4.) PARTS MAY BE COATED WITH A LIGHT FILM OF LUBRICATION USE IN THE MANUFACTURING PROCESS.
- 5.) INSERTION/WITHDRAWAL FORCES ARE INDICATED ON THE QUALITY INSPECTION RECORD.
- 6.) TO ACCEPT: .032 X .250 NEMA STANDARD MALE.
- 7.) WIRE RANGE: 22-18 AWG.
- 8.) INSULATION RANGE: ϕ .100-.130.

Rev.	Description of Change/ SCN#	Date
1	REDRAWN ON SOLIDWORKS NO CHANGES SCJ	11/09/04
2	COMPLETED P/C LIST SCJ	7/26/08
3	ECR# 4918 SCJ	1/05/18
4	ECR# 5121 SCJ	5/30/18

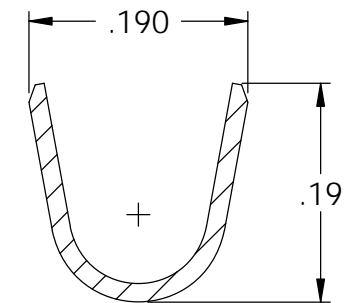
P/C	DESCRIPTION	MAT'L	UL	RA	SP
07584	D268E-HB	NOTE 1	X		X
07587	D268E-NPS	NOTE 3		X	
07592	D268E-THB	NOTE 2	X		X



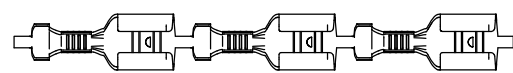
SECTION A-A
SCALE 6 : 1



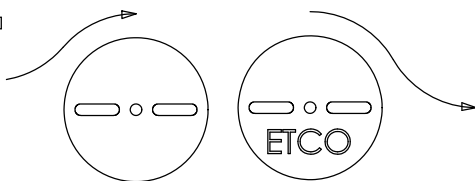
SECTION B-B
SCALE 6 : 1



SECTION C-C
SCALE 6 : 1



DIRECTION EXITING TOOL,
EARS UP TO THE LEFT



DIRECTION TOWARD APPLICATOR,
EARS UP TO THE RIGHT

UNCONTROLLED COPY

<p>THIRD ANGLE PROJECTION TOLERANCES UNLESS OTHERWISE SPECIFIED INCHES: .XX - \pm.030 .XXX - \pm.015 ANGLES: \pm5°</p>	TOOL NO. 0112 ⁽³⁾	Title: .032 X .250 FEMALE DISCONNECT	
		DO NOT SCALE DWG.	Drawn By: S. Johnson Chk'd/App'd By: Date: 11-9-04 Scale: 10X Size: B
		Dwg. No.: <h2>D268E cust</h2>	