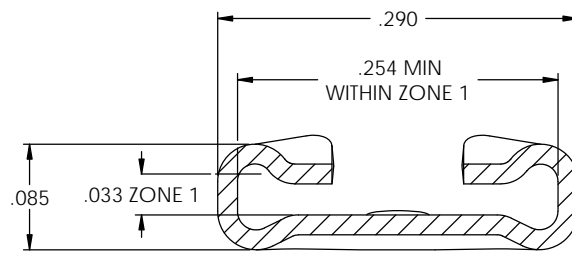
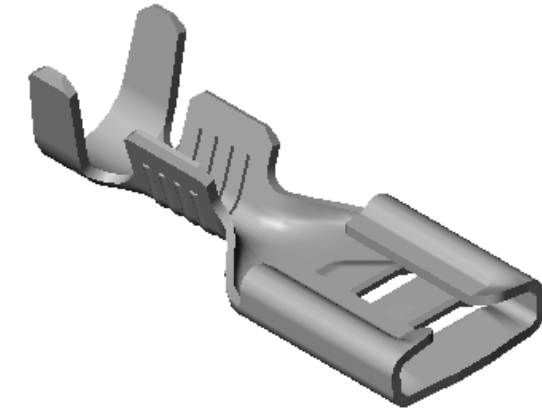
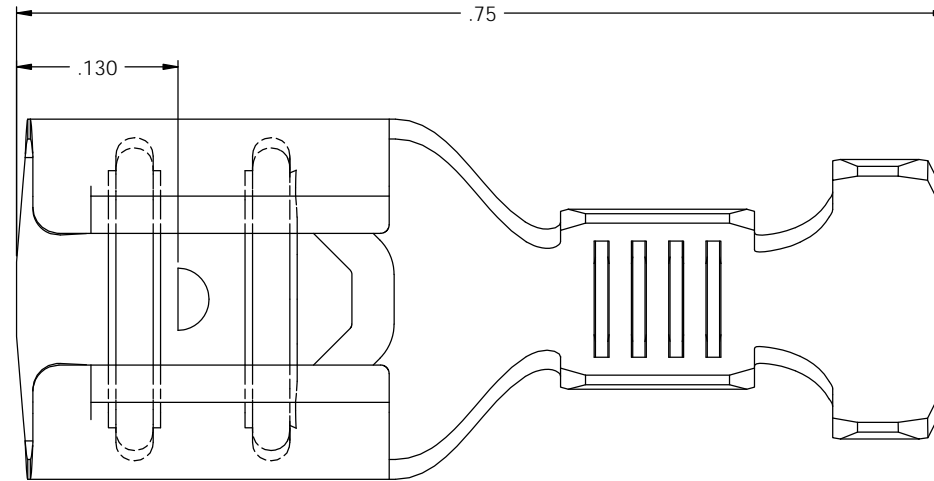


NOTES:

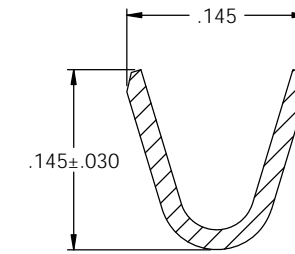
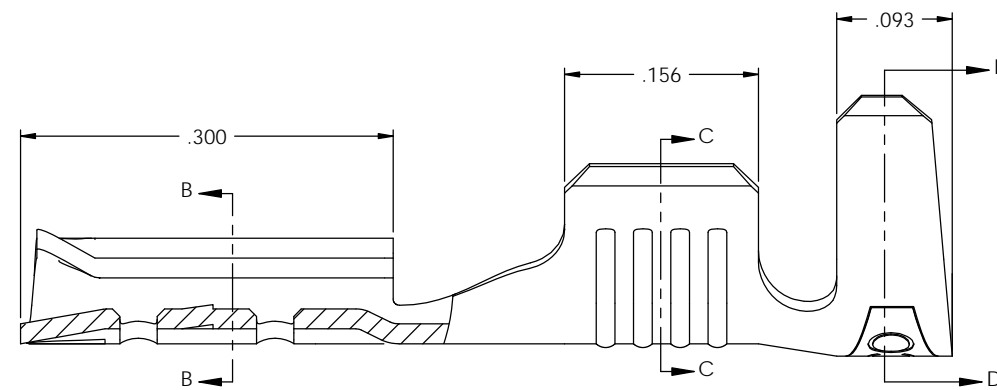
- MATERIAL: .016 THICK BRASS
#4 TEMPER (FULL HARD)
PER ETCO METAL CODE 05044.
- MATERIAL: .016 THICK PRE-TINNED BRASS
#4 TEMPER (FULL HARD)
PER ETCO METAL CODE 05244.
- MATERIAL: .016 THICK NICKEL PLATED STEEL
#2 TEMPER (1/2 HARD)
PER ETCO METAL CODE 03153.
- PARTS MAY BE COATED WITH A LIGHT FILM OF LUBRICATION USED IN THE MANUFACTURING PROCESS.
- INSERTION/WITHDRAWAL FORCES ARE INDICATED ON THE QUALITY INSPECTION PLAN.
- TO ACCEPT: .032 X .250 MALE TAB.
- WIRE RANGE: #18-#14 AWG.
- INSULATION DIAMETER RANGE: ϕ .120- ϕ .155.

| P/C | DESCRIPTION | MAT'L | WIND FROM PRESS | UL | RA | CS |
|-------|-------------|--------|-----------------|----|----|----|
| 07562 | D269E-HB | NOTE 1 | UNDER | X | | X |
| 07563 | D269E-THB | NOTE 2 | UNDER | X | | X |
| 07564 | D269E-NPS | NOTE 3 | UNDER | | X | |
| 07995 | D269E-HB-B | NOTE 1 | OVER | X | | X |

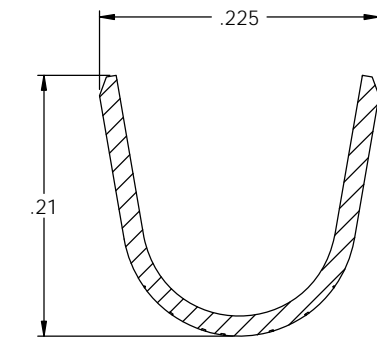
| Rev. | Description of Change/ SCN# | Date |
|------|--|----------|
| 1 | REDRAWN ON SOLIDWORKS REMOVED 59148 (Obs) SCJ ORG. ENG. DWG. DATE: 12-7-92 | 3-20-06 |
| 1 | ECR# 4021 SCJ | 12/09/15 |
| 2 | ECR# 5121 SCJ | 5/30/18 |



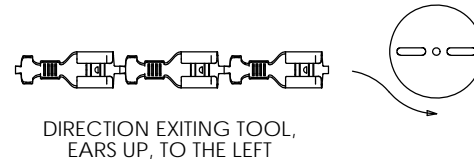
SECTION B-B
SCALE 10 : 1



SECTION C-C
SCALE 10 : 1



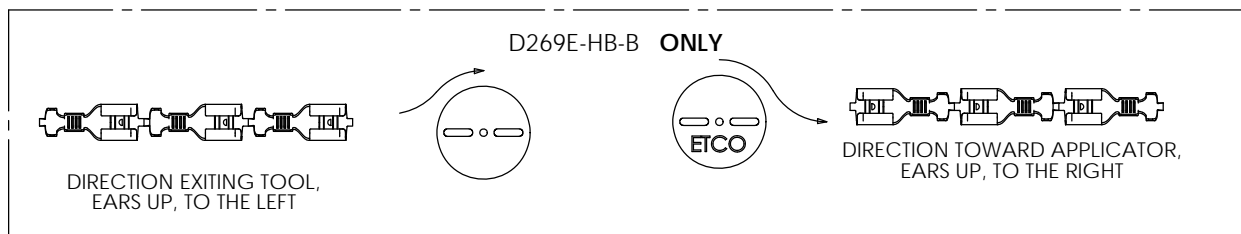
SECTION D-D
SCALE 10 : 1



DIRECTION EXITING TOOL,
EARS UP, TO THE LEFT



DIRECTION TOWARD APPLICATOR,
EARS UP, TO THE RIGHT



DIRECTION EXITING TOOL,
EARS UP, TO THE LEFT

DIRECTION TOWARD APPLICATOR,
EARS UP, TO THE RIGHT

| | | | |
|---|------------------------------------|---|---|
| UNCONTROLLED COPY | | | |
| <p>THIRD ANGLE PROJECTION</p> | <p>TOOL NO.</p> <p>0112</p> | <p>Title: .032 X .250 FEMALE DISCONNECT</p> | |
| | | <p>DO NOT SCALE DWG.</p> | <p>Drawn By: S.JOHNSON</p> |
| <p>TOLERANCES UNLESS OTHERWISE SPECIFIED</p> <p>INCHES: .XX - \pm.030</p> <p>.XXX - \pm.015</p> <p>ANGLES: \pm5°</p> | | <p>ETCO Incorporated Engineered Products 25 Bellows Street Warwick, RI 02888 Phone: (401) 467-2400 Fax: (401) 467-9230 www.ETCO.com</p> | <p>Chk'd/App'd By:</p> <p>Scale: 10X</p> <p>Size: C</p> |
| | | | <p>Dwg. No.: D269E cust</p> |