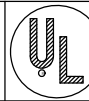
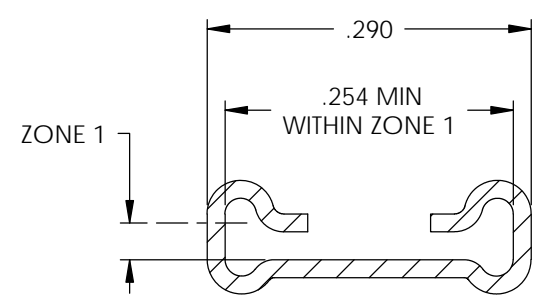
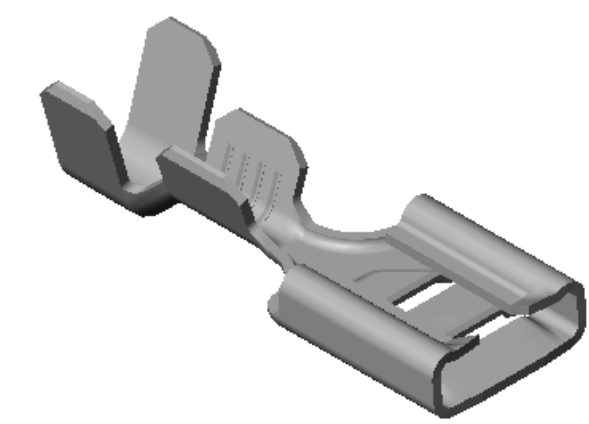
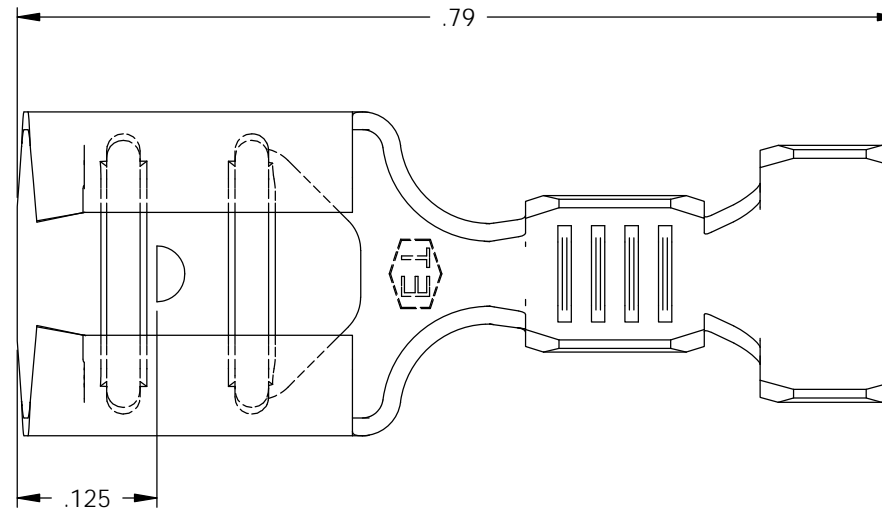


NOTE:

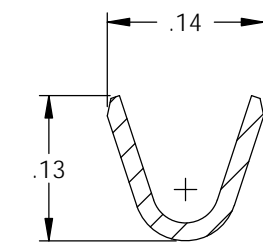
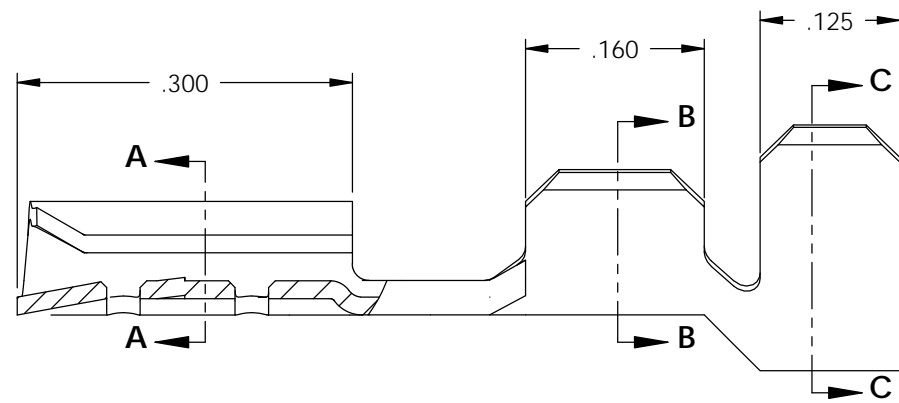
- 1.) MAT'L: .016 THK., BRASS, #4 TEMPER (FULL HARD), PER ETCO METAL CODE NO. 05042.
- 2.) MAT'L: .016 THK., PRE-TINNED BRASS, #4 TEMPER (FULL HARD), PER ETCO METAL CODE NO. 01261.
- 3.) MAT'L: .016 THK., PRE-NICKEL PLATED STEEL, #2 TEMPER (HALF HARD), PER ETCO METAL CODE NO. 03150.
- 4.) PARTS MAY BE COATED WITH A LIGHT FILM OF LUBRICATION USED IN THE MANUFACTURING PROCESS.
- 5.) INSERTION/WITHDRAWAL FORCES ARE INDICATED ON THE QUALITY INSPECTION RECORD.
- 6.) MATING PART: .032 X .250 NEMA STANDARD MALE.
- 7.) WIRE RANGE: 16-18 AWG.
- 8.) INSULATION RANGE:  $\varnothing$ .080-.140.

P/C	DESCRIPTION	MAT'L	
07670	D280-HB	NOTE 1	X
07671	D280-THB	NOTE 2	X
07672	D280-NPS	NOTE 3	

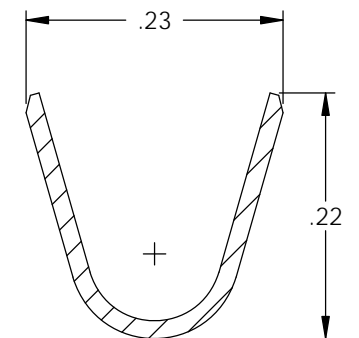
Rev.	Description of Change/ SCN#	Date
1	REDRAWN ON SOLIDWORKS NO CHANGES SCJ ORG.ENG.DWG.DATE: 10-1-91	2-3-06
2	ECR# 1293 SCJ	4/13/12



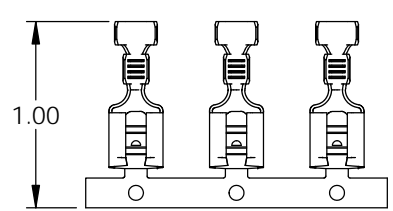
SECTION A-A  
SCALE 6 : 1



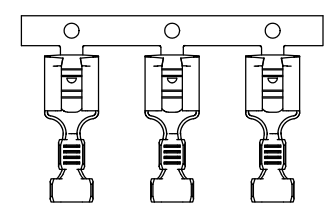
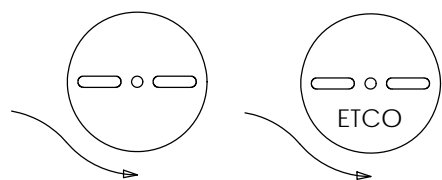
SECTION B-B  
SCALE 6 : 1



SECTION C-C  
SCALE 6 : 1





DIRECTION EXITING TOOL,  
EARS UP, TO THE BACK



DIRECTION TOWARD APPLICATOR,  
EARS UP, TO THE FRONT

# UNCONTROLLED COPY

 THIRD ANGLE PROJECTION TOLERANCES UNLESS OTHERWISE SPECIFIED INCHES: .XX - $\pm$ .030 .XXX - $\pm$ .015 ANGLES: $\pm 5^\circ$	TOOL NO. <b>0579</b>	Title: <b>.032 X .250 FEMALE DISCONNECT</b>	
		DO NOT SCALE DWG. Drawn By: S.JOHNSON Date: 2-3-06	Chk'd/App'd By: Scale: 6X Size: <b>B</b>
		Dwg. No.: <b>D280 cust</b>	
		ETCO Incorporated Engineered Products 25 Bellows Street Warwick, RI 02888 Phone: (401) 467-2400 Fax: (401) 467-9230 www.ETCO.com	