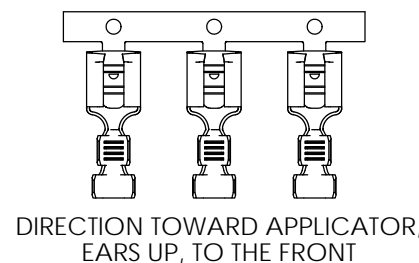
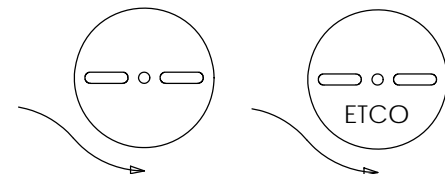
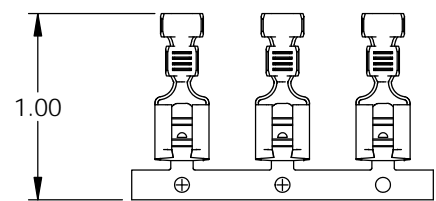
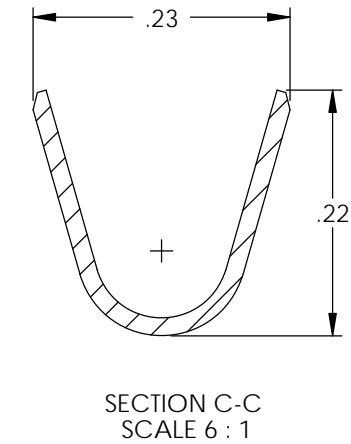
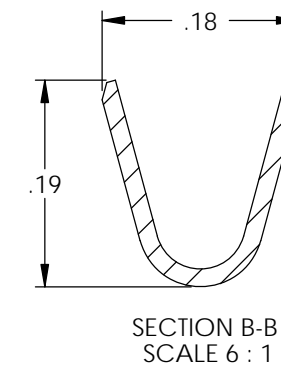
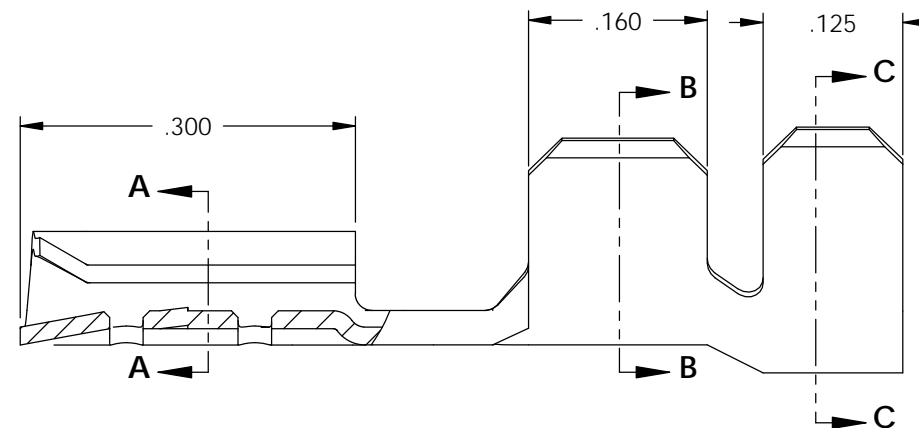
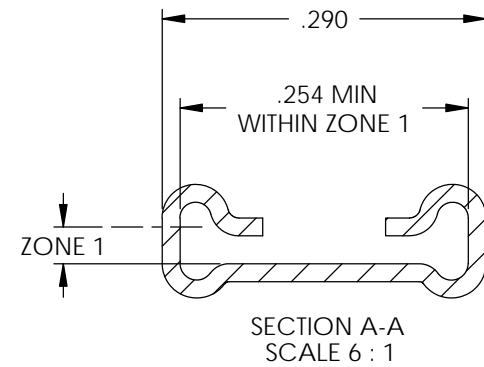
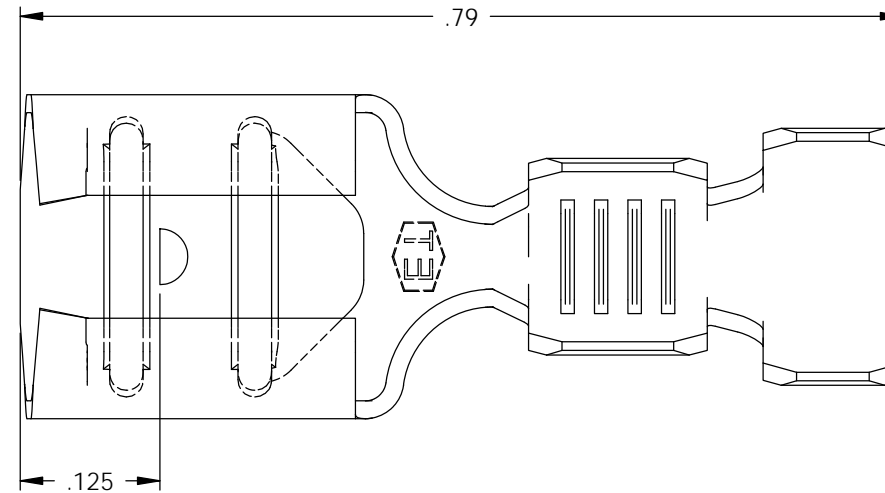
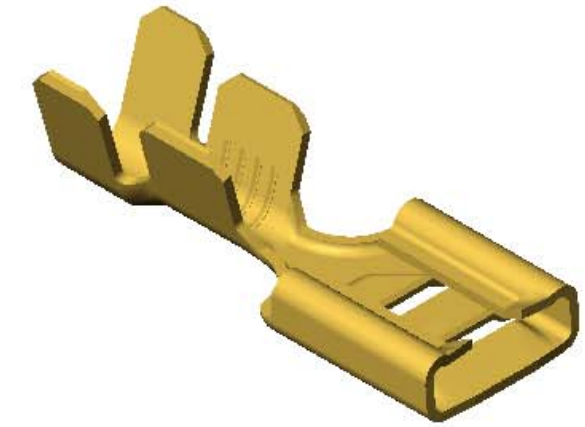


- NOTE:
- MAT'L: .016 THK., BRASS, #4 TEMPER (FULL HARD), PER ETCO METAL CODE NO. 05042.
 - MAT'L: .016 THK., PRE-TINNED BRASS, #4 TEMPER (FULL HARD), PER ETCO METAL CODE NO. 01261.
 - MAT'L: .016 THK., PRE-NICKEL PLATED STEEL, #2 TEMPER (HALF HARD), PER ETCO METAL CODE NO. 03150.
 - PARTS MAY BE COATED WITH A LIGHT FILM OF LUBRICATION USED IN THE MANUFACTURING PROCESS.
 - INSERTION/WITHDRAWAL FORCES ARE INDICATED ON THE QUALITY INSPECTION RECORD.
 - MATING PART: .032 X .250 NEMA STANDARD MALE.
 - WIRE RANGE: 14 AWG.
 - INSULATION RANGE: \varnothing .080-.140.

P/C	DESCRIPTION	MAT'L
07359	D286-HB	NOTE 1

Rev.	Description of Change/ SCN#	Date
1	ECR #774 JMR	8-16-11
2	ECR# 1293 SCJ	4/13/12



UNCONTROLLED COPY

<p>THIRD ANGLE PROJECTION TOLERANCES UNLESS OTHERWISE SPECIFIED INCHES: .XX - \pm.030 .XXX - \pm.015 ANGLES: \pm5°</p>	<p>TOOL NO. 0579</p>	<p>Title: .032 X .250 FEMALE DISCONNECT</p>	
	<p>DO NOT SCALE DWG.</p>	<p>Drawn By: S.JOHNSON</p>	<p>Date: 6-8-07</p>
<p>ETCO Incorporated Engineered Products 25 Bellows Street Warwick, RI 02888 Phone: (401) 467-2400 Fax: (401) 467-9230 www.ETCO.com</p>	<p>Chk'd/App'd By:</p>	<p>Scale: 6X</p>	<p>Size B</p>
<p>Dwg. No.:</p>		<p>D286 cust</p>	