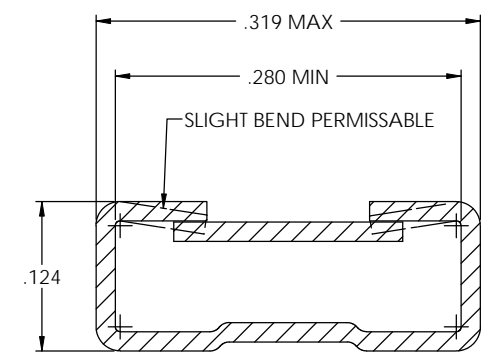
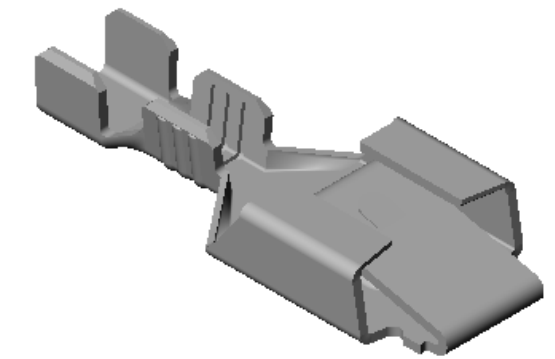
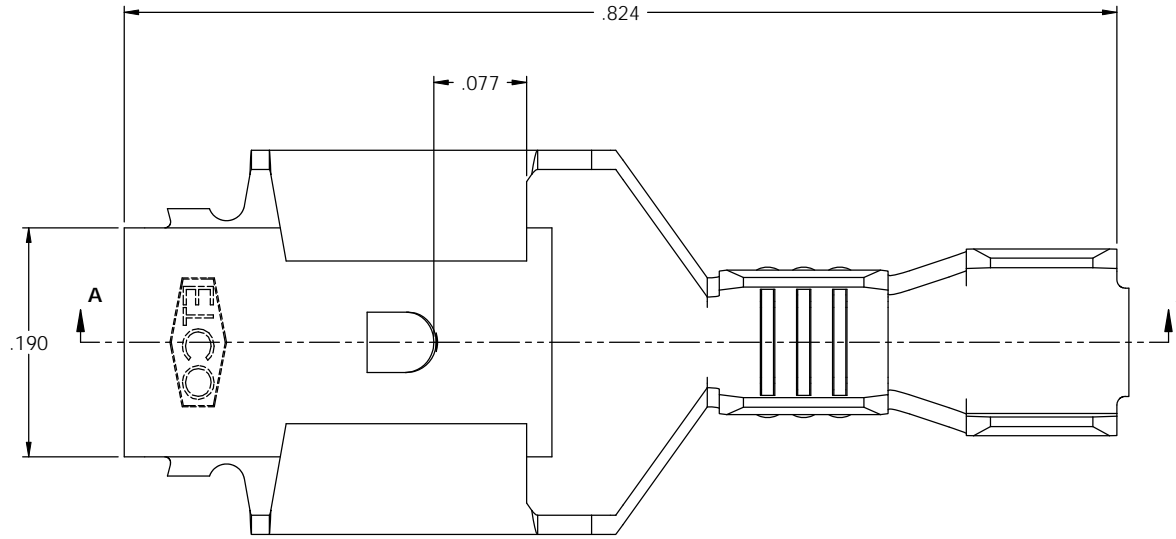


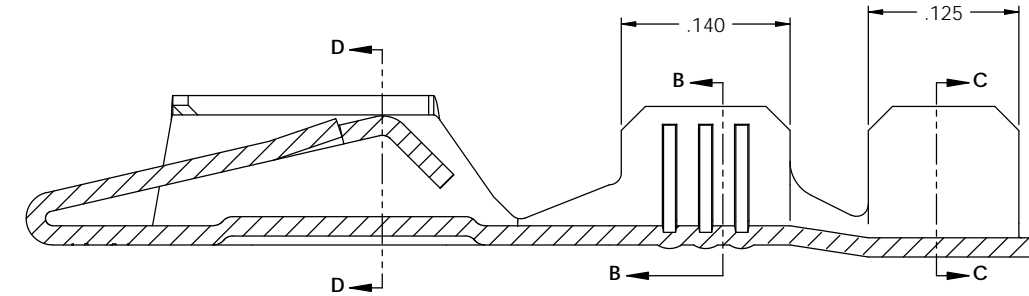
- NOTE:  
 1.) MAT'L: .016 THK., BRASS,  
 #4 TEMPER (FULL HARD),  
 PER ETCO METAL CODE NO. 05050.  
 2.) MAT'L: .016 THK., PRE-TINNED BRASS,  
 #4 TEMPER (FULL HARD),  
 PER ETCO METAL CODE NO. 05248.  
 3.) PARTS MAY BE COATED WITH A LIGHT  
 FILM OF LUBRICATION USED IN THE  
 MANUFACTURING PROCESS.  
 4.) TO ACCEPT: .032 X .250 NEMA STANDARD MALE.  
 5.) WIRE RANGE: 20-18 AWG.  
 6.) INSUL RANGE: Ø.060-.125.

Rev.	Description of Change/ SCN#	Date
2	REDRAWN ON SOLIDWORK NO CHANGES SCJ ORG.ENG.DWG.DATE: 10-14-92	11-29-04
3	ECR# 449 JMR	9-22-10
4	ECR# 613 SCJ	5-13-11

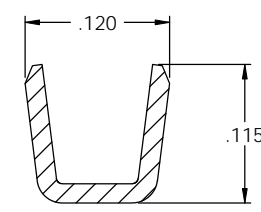
P/C	DESCRIPTION	MAT'L	UL	SP
07603	D365-THB	NOTE 2	X	X
07634	D365-HB	NOTE 1	X	X



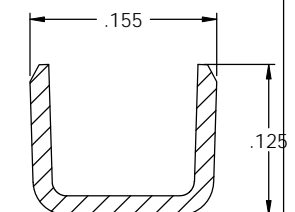
SECTION D-D  
SCALE 10 : 1



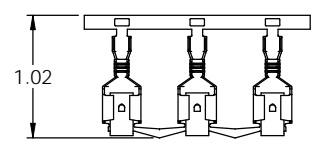
SECTION A-A  
SCALE 10 : 1



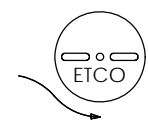
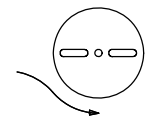
SECTION B-B  
SCALE 10 : 1



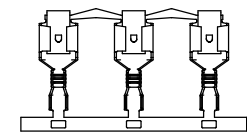
SECTION C-C  
SCALE 10 : 1



DIRECTION EXITING TOOL,  
EARS UP, TO THE BACK



DIRECTION TOWARD APPLICATOR,  
EARS UP, TO THE FRONT



**UNCONTROLLED COPY**

 THIRD ANGLE PROJECTION	TOOL NO. <b>0756</b>	Title: .250 FEMALE DISCONNECT
	INCHES: XX - ±.030 XXX - ±.015 ANGLES: ±5°	DO NOT SCALE DWG. Drawn By: <b>S. Johnson</b> Date: 11-29-04
 ETCO	ETCO Incorporated Engineered Products 25 Bellows Street Warwick, RI 02888 Phone: (401) 467-2400 Fax: (401) 467-9230 www.ETCO.com	Dwg. No.: <b>D365 cust</b>