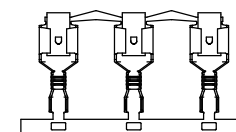
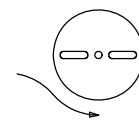
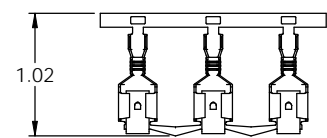
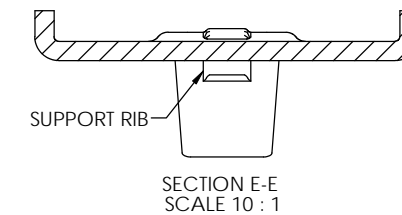
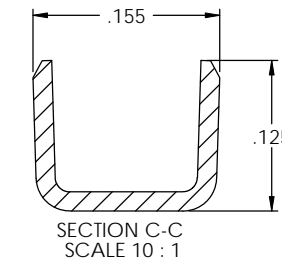
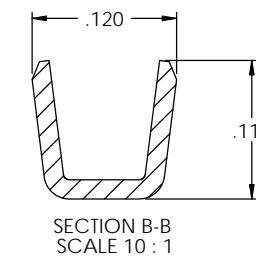
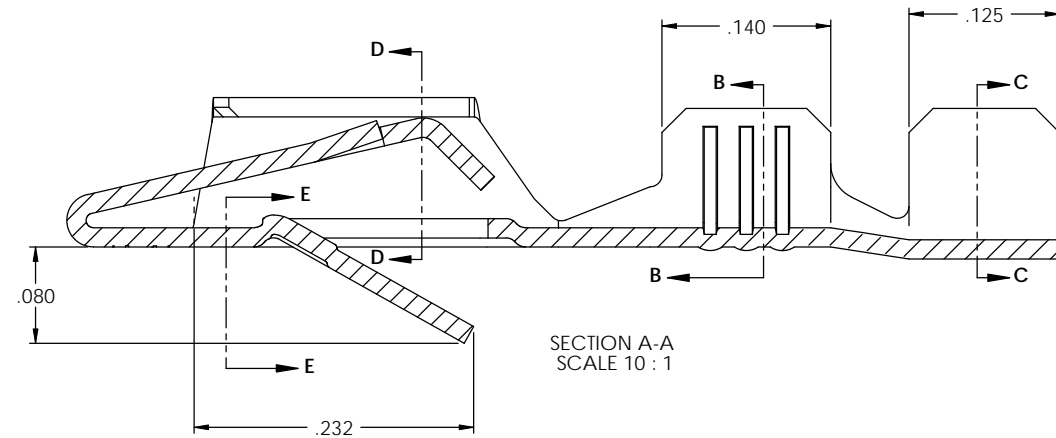
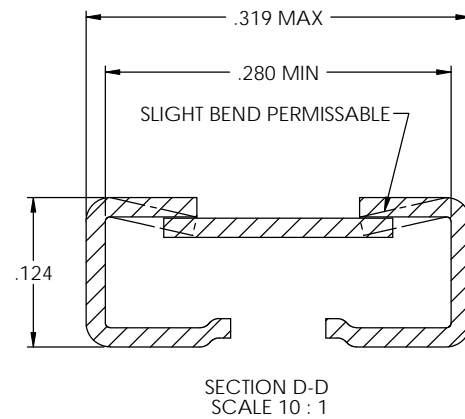
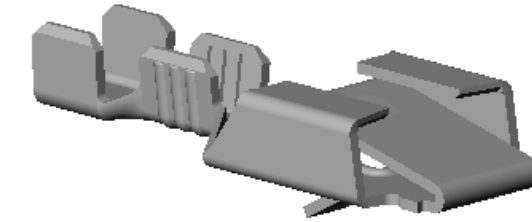
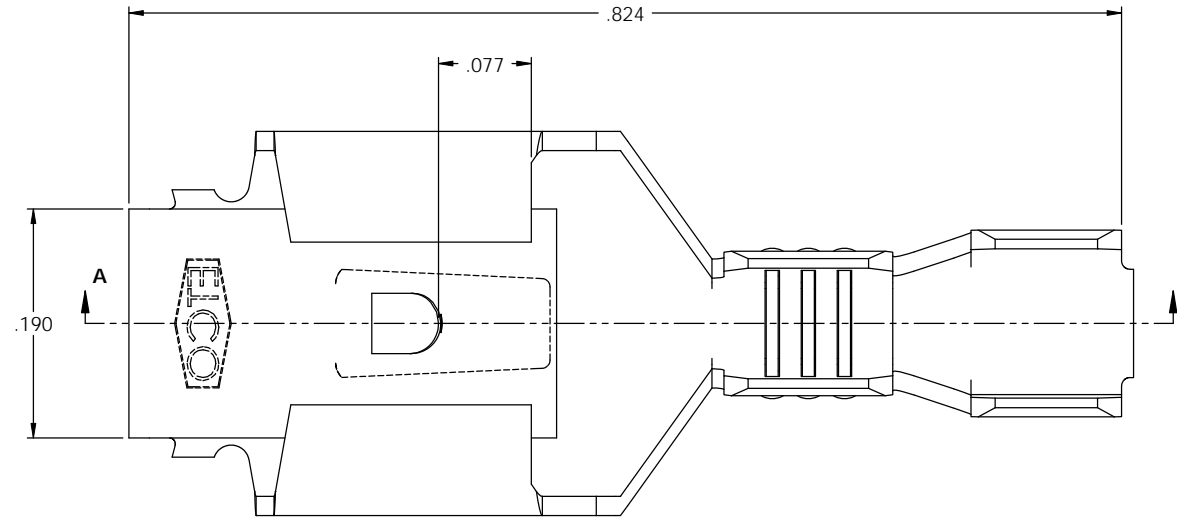


- NOTE:  
 1.) MAT'L: .016 THK., BRASS,  
 #4 TEMPER (FULL HARD),  
 PER ETCO METAL CODE NO. 05050.  
 2.) MAT'L: .016 THK., PRE-TINNED BRASS,  
 #4 TEMPER (FULL HARD),  
 PER ETCO METAL CODE NO. 05248.  
 3.) PARTS MAY BE COATED WITH A LIGHT  
 FILM OF LUBRICATION USED IN THE  
 MANUFACTURING PROCESS.  
 4.) TO ACCEPT: .032 X .250 NEMA STANDARD MALE.  
 5.) WIRE RANGE: 20-18 AWG.  
 6.) INSUL RANGE: Ø.060-.125.

P/C	DESCRIPTION	MAT'L	UL	CSA
07628	D365L-HB	NOTE 1	X	X
07629	D365L-THB	NOTE 2	X	X

Rev.	Description of Change/ SCN#	Date
2	REDRAWN ON SOLIDWORK NO CHANGES SCJ ORG.ENG.DWG.DATE: 10-14-92	11-30-04
3	SCN# 140272 SCJ	10-30-07
4	ECR# 449 JMR	9-22-10



DIRECTION TOWARD APPLICATOR,  
EARS UP, TO THE FRONT

DIRECTION EXITING TOOL,  
EARS UP, TO THE BACK

### UNCONTROLLED COPY

 THIRD ANGLE PROJECTION	TOOL NO. <b>0756</b>	Title: <b>.250 FEMALE DISCONNECT W/ LOCKING TAB</b>	DO NOT SCALE DWG.	Drawn By: <b>S. Johnson</b>	Date: <b>11-30-04</b>
	TOLERANCES UNLESS OTHERWISE SPECIFIED INCHES: XX - ±.030 XXX - ±.015 ANGLES: ±5°		ETCO Incorporated Engineered Products 25 Bellows Street Warwick, RI 02888 Phone: (401) 467-2400 Fax: (401) 467-9230 www.ETCO.com	Chk'd/App'd By:	Scale: <b>10X</b>
			Dwg. No.: <b>D365L cust</b>		