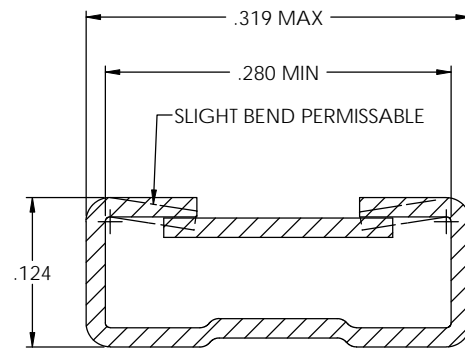
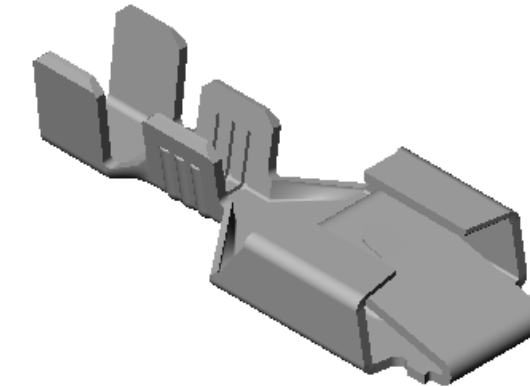
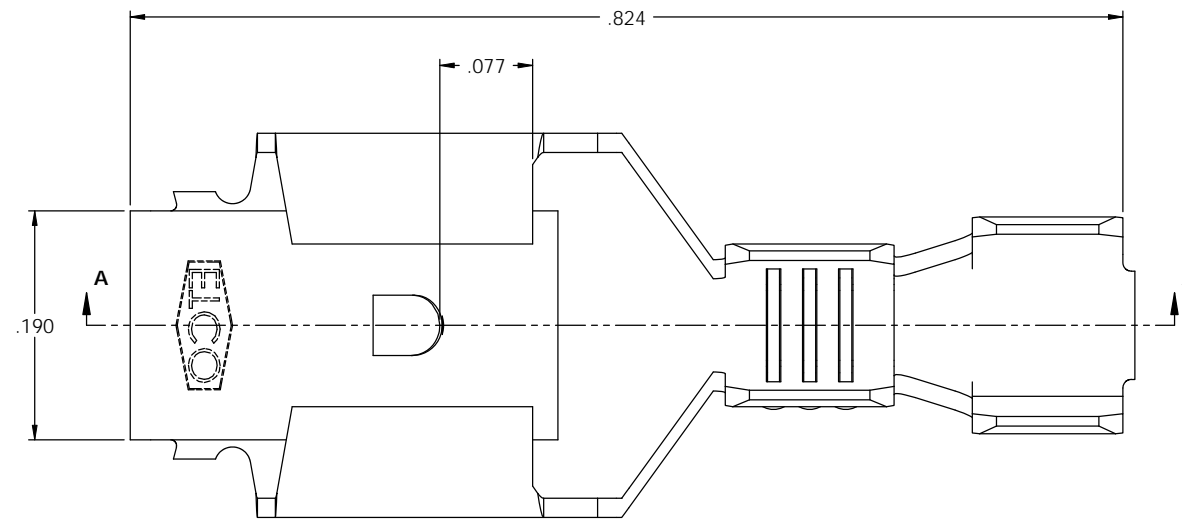


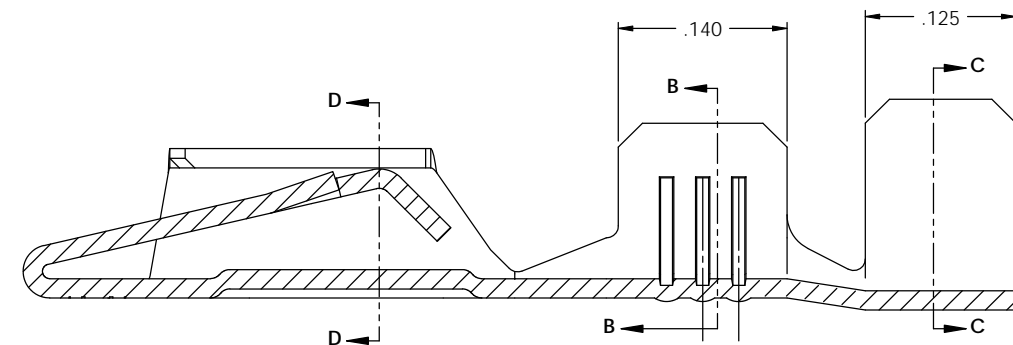
- NOTE:
- MAT'L: .016 THK., BRASS, #4 TEMPER (FULL HARD), PER ETCO METAL CODE NO. 05050.
 - MAT'L: .016 THK., PRE-TINNED BRASS, #4 TEMPER (FULL HARD), PER ETCO METAL CODE NO. 05248.
 - PARTS MAY BE COATED WITH A LIGHT FILM OF LUBRICATION USED IN THE MANUFACTURING PROCESS.
 - TO ACCEPT: .032 X .250 NEMA STANDARD MALE.
 - WIRE RANGE: 18-14 AWG.
 - INSUL RANGE: \varnothing .120-.187.

P/C	DESCRIPTION	MAT'L	UL	CS
07651	D366-THB	NOTE 2	X	X
07674	D366-HB	NOTE 1	X	X

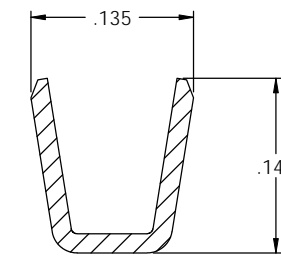
Rev.	Description of Change/ SCN#	Date
2	REDRAWN ON SOLIDWORK NO CHANGES SCJ ORG.ENG.DWG.DATE: 10-14-92	11-29-04
3	SCN# 140272 SCJ	10-30-07
4	ECR #449 JMR	9-22-10
5	ECR# 613 SCJ	5-13-11



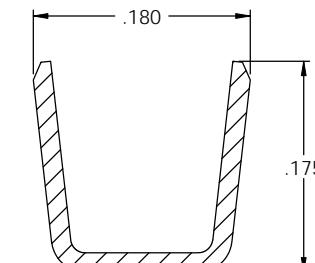
SECTION D-D
SCALE 10 : 1



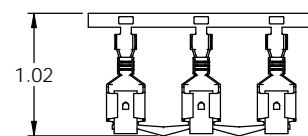
SECTION A-A
SCALE 10 : 1



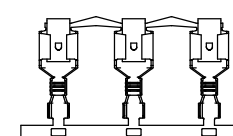
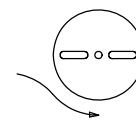
SECTION B-B
SCALE 10 : 1



SECTION C-C
SCALE 10 : 1



DIRECTION EXITING TOOL,
EARS UP, TO THE BACK



DIRECTION TOWARD APPLICATOR,
EARS UP, TO THE FRONT

UNCONTROLLED COPY

 THIRD ANGLE PROJECTION	TOOL NO. 0756	Title: .250 FEMALE DISCONNECT	
	TOLERANCES UNLESS OTHERWISE SPECIFIED INCHES: XX - \pm .030 XXX - \pm .015 ANGLES: \pm 5°	 ETCO Incorporated Engineered Products 25 Bellows Street Warwick, RI 02888 Phone: (401) 467-2400 Fax: (401) 467-9230 www.ETCO.com	DO NOT SCALE DWG. Drawn By: S. Johnson Date: 11-29-04
		Dwg. No.: D366 cust	