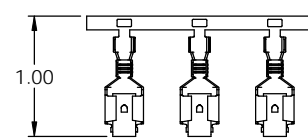
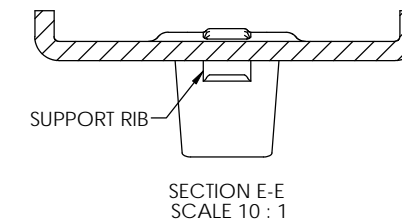
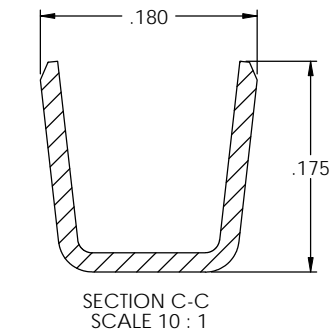
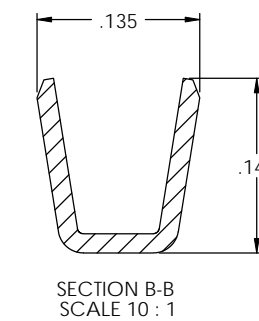
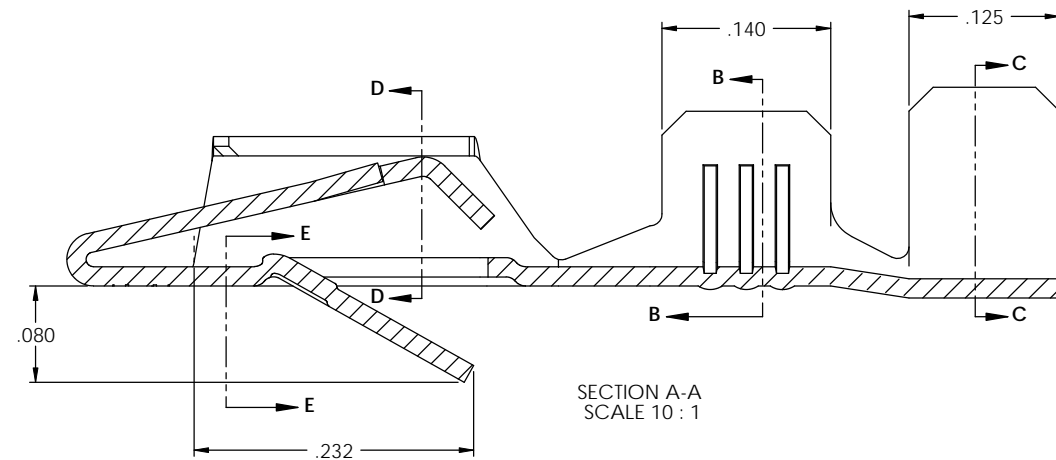
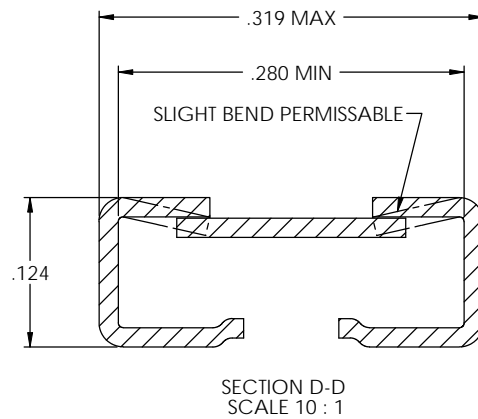
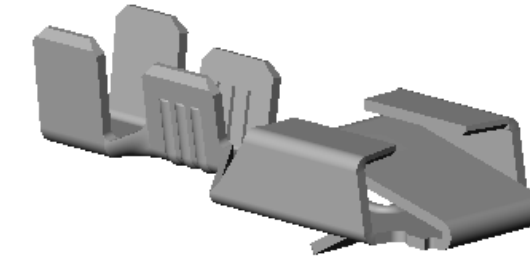
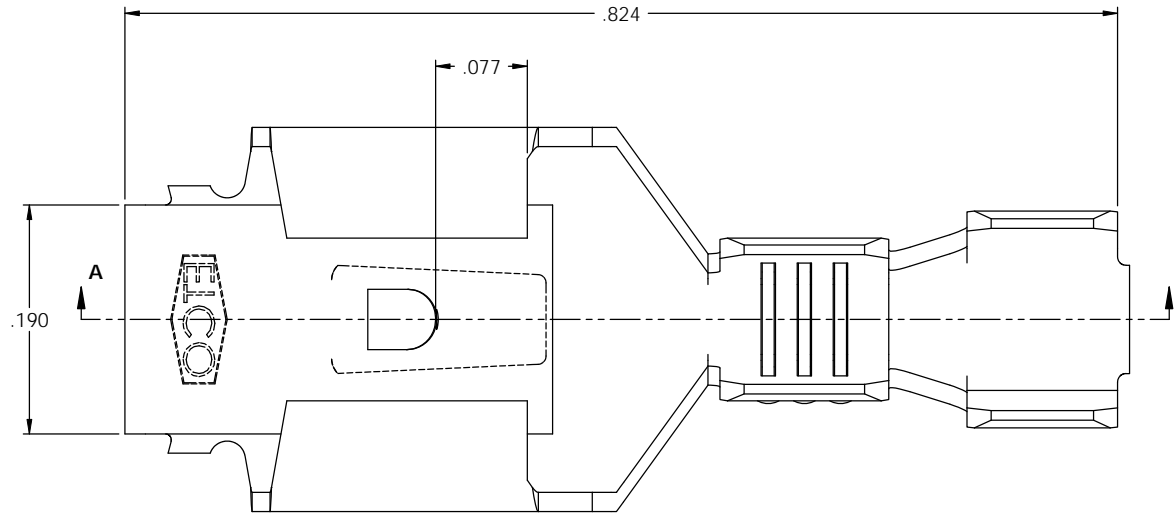


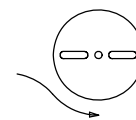
- NOTE:
- MAT'L: .016 THK., BRASS, #4 TEMPER (FULL HARD), PER ETCO METAL CODE NO. 05050.
 - MAT'L: .016 THK., PRE-TINNED BRASS, #4 TEMPER (FULL HARD), PER ETCO METAL CODE NO. 05248.
 - PARTS MAY BE COATED WITH A LIGHT FILM OF LUBRICATION USED IN THE MANUFACTURING PROCESS.
 - TO ACCEPT: .032 X .250 NEMA STANDARD MALE.
 - WIRE RANGE: 18-14 AWG.
 - INSUL RANGE: Ø.120-187.

P/C	DESCRIPTION	MAT'L
07386	D369L-THB	NOTE 2
07393	D369L-HB	NOTE 1

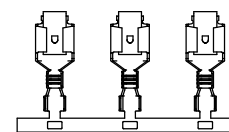
Rev.	Description of Change/ SCN#	Date
2	REDRAWN ON SOLIDWORK NO CHANGES SCJ ORG. ENG. DWG. DATE: 9-6-96	11-30-04
3	ECR #449 JMR	9-22-10
4	ECR# 613 SCJ	5-13-11



DIRECTION EXITING TOOL,
EARS UP, TO THE BACK



DIRECTION TOWARD APPLICATOR,
EARS UP, TO THE FRONT



UNCONTROLLED COPY

 THIRD ANGLE PROJECTION	TOOL NO. 0756	Title: .250 FEMALE DISCONNECT W/ LOCKING TAB
	DO NOT SCALE DWG.	Drawn By: S. Johnson
TOLERANCES UNLESS OTHERWISE SPECIFIED INCHES: XX - ±.030 XXX - ±.015 ANGLES: ±5°	 ETCO Incorporated Engineered Products 25 Bellows Street Warwick, RI 02888 Phone: (401) 467-2400 Fax: (401) 467-9230 www.ETCO.com	Chk'd/App'd By: _____ Scale: 10X Size: C
Dwg. No.: D369L cust		