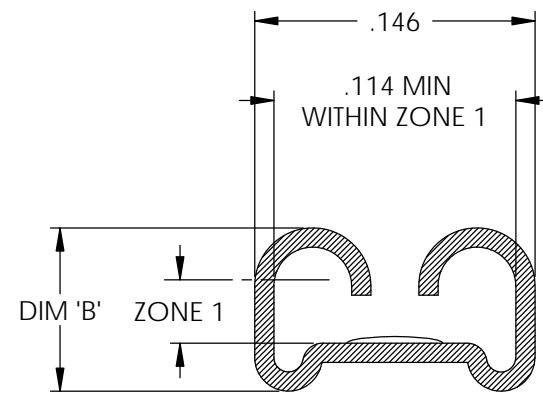
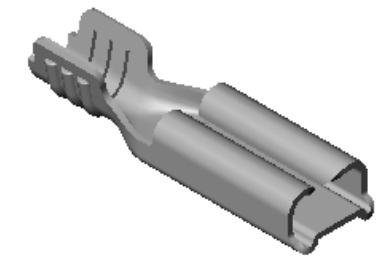
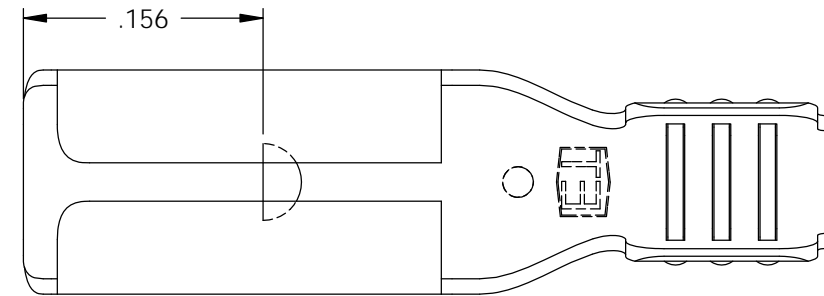


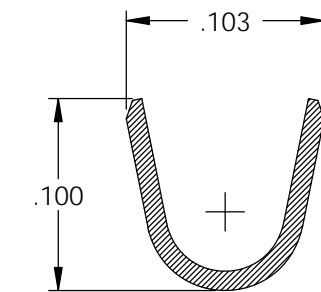
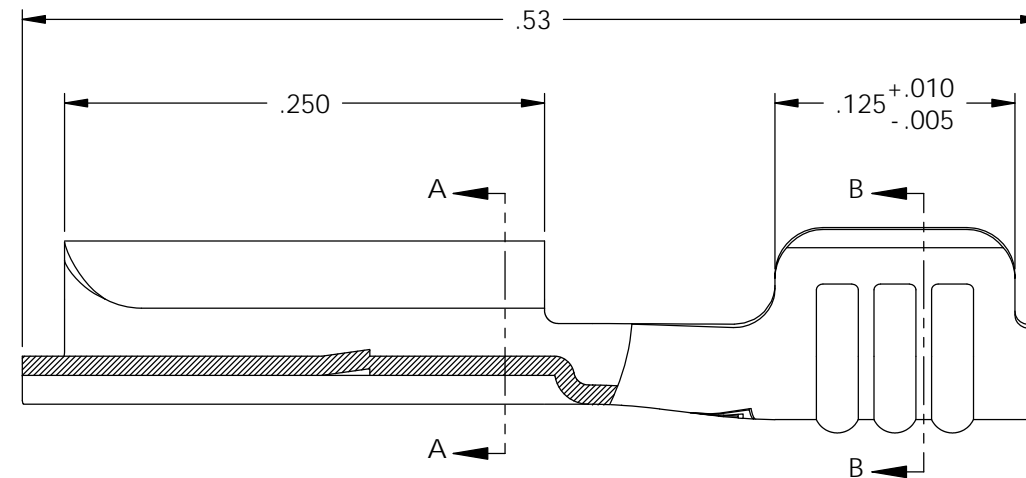
- NOTES:
- MATERIAL: .010 THICK BRASS
#4 TEMPER (FULL HARD)
PER ETCO METAL CODE 00010.
 - MATERIAL: .010 THICK PRETINNED BRASS
#4 TEMPER (FULL HARD)
PER ETCO METAL CODE 01022.
 - PARTS MAY BE COATED WITH A LIGHT FILM OF LUBRICATION USED IN THE MANUFACTURING PROCESS.
 - INSERTION/WITHDRAWAL FORCES ARE INDICATED ON THE QUALITY INSPECTION PLAN.
 - ACCEPTED NEMA STANDARD MALE: SEE CHART.
 - WIRE RANGE: #18-#22 AWG.

P/C	DESCRIPTION	ACCEPTED MALE	DIM 'B'	ZONE 1	MAT'L	UL	SP
07130	D50-HB	.032 X .110	.085 ± .030	.033	NOTE 1	X	X
07140	D50-THB	.032 X .110	.085 ± .030	.033	NOTE 2	X	X
07150	D51-HB	.025 X .110	.083 ± .030	.026	NOTE 1		X
07160	D51-THB	.025 X .110	.083 ± .030	.026	NOTE 2		X
07170	D52-HB	.020 X .110	.08	.021	NOTE 1	X	X
07180	D52-THB	.020 X .110	.08	.021	NOTE 2	X	X
07190	D54-HB	.016 X .110	.078 ± .030	.017	NOTE 1		X
07200	D54-THB	.016 X .110	.078 ± .030	.017	NOTE 2		X
07223	D57-HB	.010 X .110	.075 ± .030	.011	NOTE 1		X
07224	D57-THB	.010 X .110	.075 ± .030	.011	NOTE 2		X

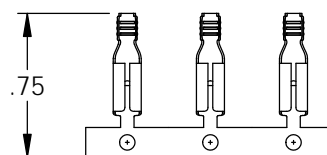
Rev.	Description of Change/ SCN#	Date
2	REDRAWN ON SOLIDWORKS ADDED P/Cs SCJ ORG.ENG.DWG.DATE: 4-2-92	8-23-06
3	SCN# 140204 SCJ	7-18-07
3	ECR# 3798 SCJ	7/20/15



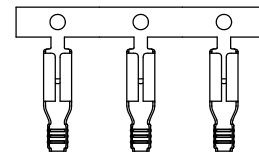
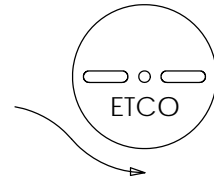
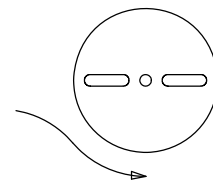
SECTION A-A
SCALE 10 : 1



SECTION B-B
SCALE 10 : 1



DIRECTION EXITING TOOL,
EARS UP, TO THE BACK



DIRECTION TOWARD APPLICATOR,
EARS UP, TO THE FRONT

UNCONTROLLED COPY

THIRD ANGLE PROJECTION
TOLERANCES UNLESS OTHERWISE SPECIFIED
INCHES: .XX - ±.030
.XXX - ±.015
ANGLES: ±5°

TOOL NO.
0096



Title: **.110 FEMALE DISCONNECT**

DO NOT SCALE DWG.

ETCO Incorporated
Engineered Products
25 Bellows Street
Warwick, RI 02888
Phone: (401) 467-2400
Fax: (401) 467-9230
www.ETCO.com

Drawn By: **S.JOHNSON**

Chk'd/App'd By:

Scale:
10X

Date: **8-23-06**

Size
B

Dwg. No.:

D50, D51, D52, D54, D57 cust