
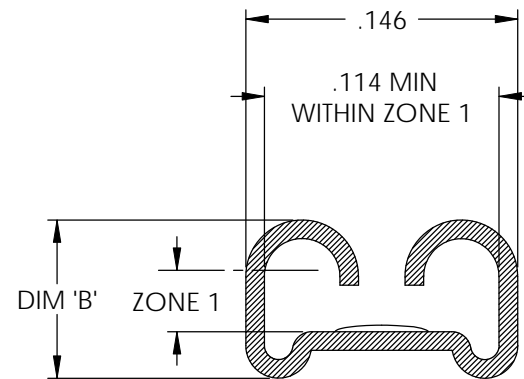
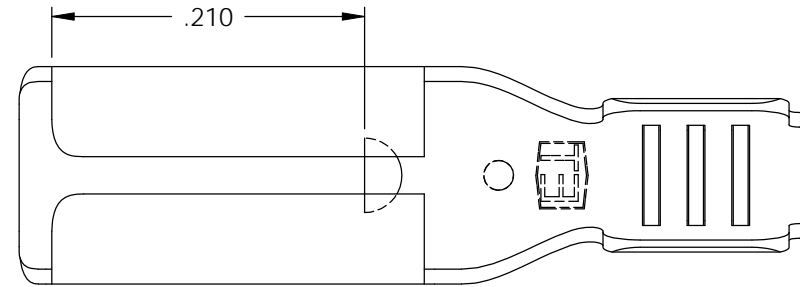
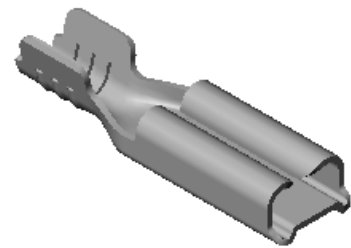


NOTES:

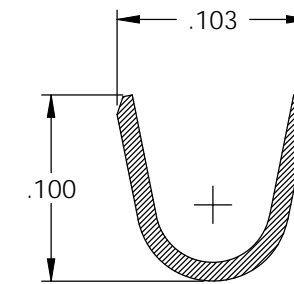
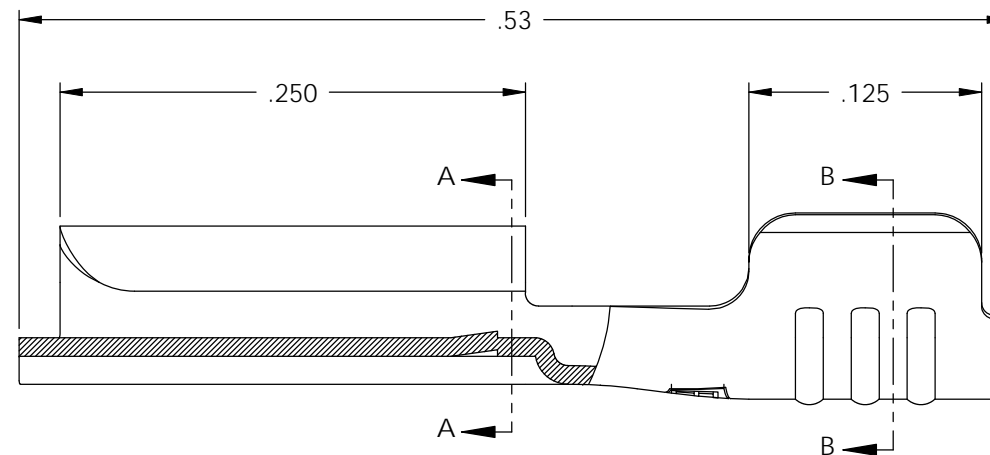
1. MATERIAL: .010 THICK BRASS
#4 TEMPER (FULL HARD)
PER ETCO METAL CODE 00010.
2. MATERIAL: .010 THICK PRETINNED BRASS
#4 TEMPER (FULL HARD)
PER ETCO METAL CODE 01022.
3. PARTS MAY BE COATED WITH A LIGHT FILM OF LUBRICATION USED IN THE MANUFACTURING PROCESS.
4. INSERTION/WITHDRAWAL FORCES ARE INDICATED ON THE QUALITY INSPECTION PLAN.
5. ACCEPTED MALE: SEE CHART.
6. WIRE RANGE: #18-#22 AWG.

P/C	DESCRIPTION	ACCEPTED MALE	DIM 'B'	ZONE 1	MAT'L	
07142	D50A-HB	.032 X .110	.085 ± .030	.033	NOTE 1	
07143	D50A-THB	.032 X .110	.085 ± .030	.033	NOTE 2	
07175	D52A-HB	.020 X .110	.08	.021	NOTE 1	X
07185	D52A-THB	.020 X .110	.08	.021	NOTE 2	X

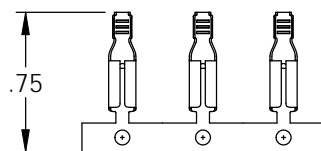
Rev.	Description of Change/ SCN#	Date
1	REDRAWN ON SOLIDWORKS ADDED P/Cs SCJ ORG.ENG.DWG.DATE: 4-2-92	8-23-06
2	SCN# 140260 SCJ	11-6-07



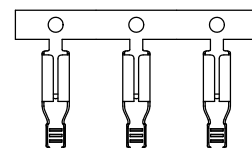
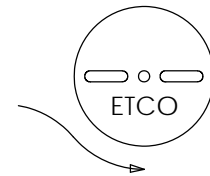
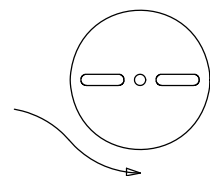
SECTION A-A
SCALE 10 : 1



SECTION B-B
SCALE 10 : 1





DIRECTION EXITING TOOL,
EARS UP, TO THE BACK



DIRECTION TOWARD APPLICATOR,
EARS UP, TO THE FRONT

UNCONTROLLED COPY

 THIRD ANGLE PROJECTION TOLERANCES UNLESS OTHERWISE SPECIFIED INCHES: .XX - ±.030 .XXX - ±.015 ANGLES: ±5°	TOOL NO. 0096	Title: .110 FEMALE DISCONNECT		
		DO NOT SCALE DWG.	Drawn By: S.JOHNSON	Date: 8-23-06
ETCO Incorporated Engineered Products 25 Bellows Street Warwick, RI 02888 Phone: (401) 467-2400 Fax: (401) 467-9230 www.ETCO.com		Chk'd/App'd By:	Scale: 10X	Size B
		Dwg. No.: D50A, D52A cust		