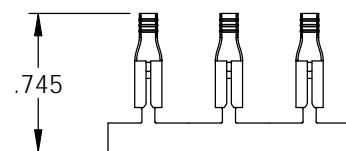
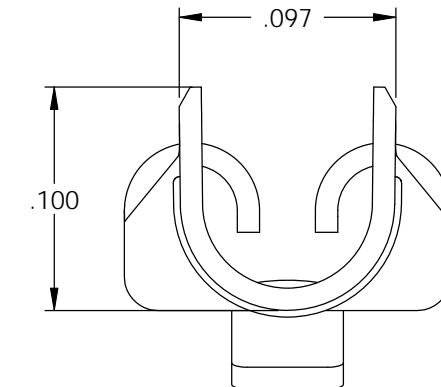
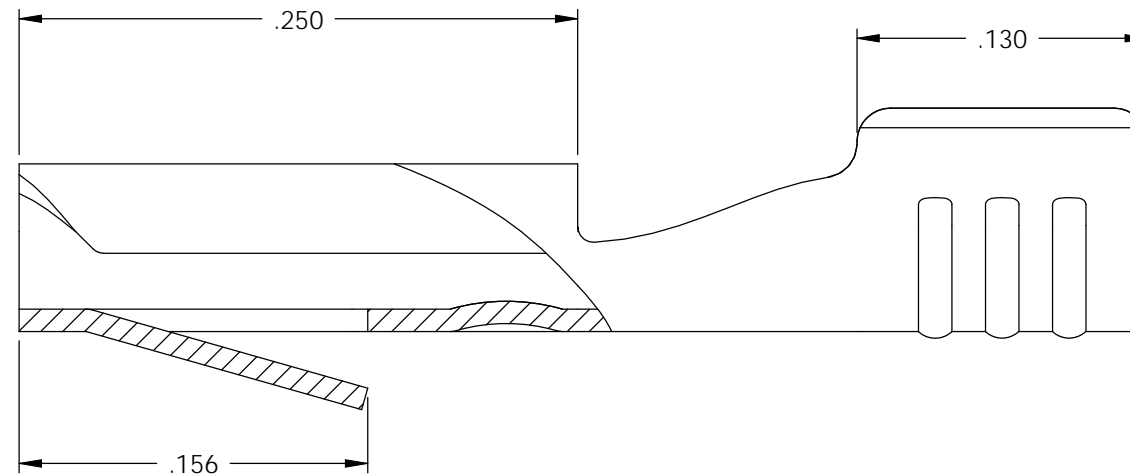
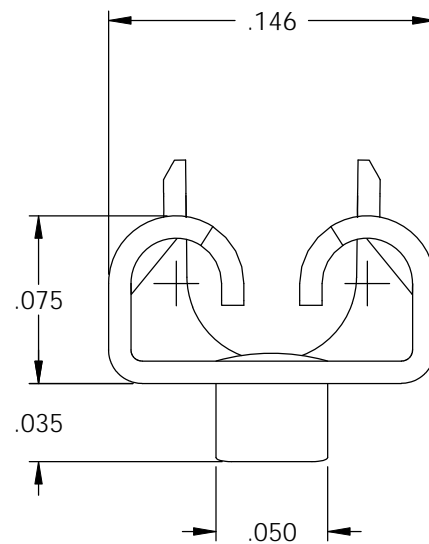
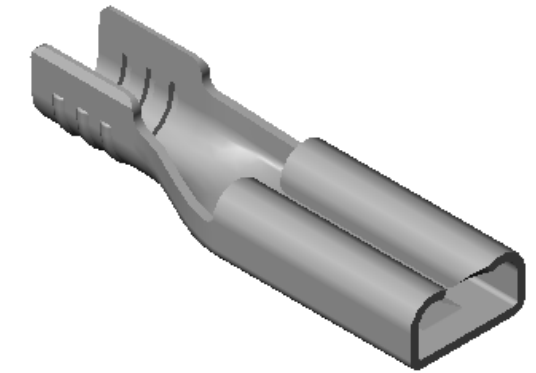
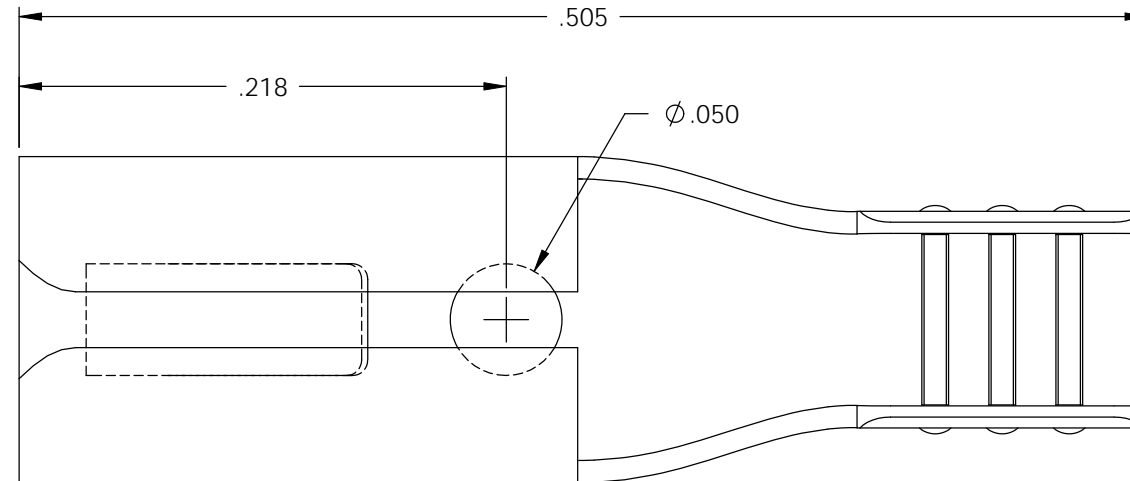


NOTES:

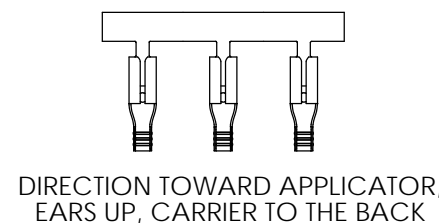
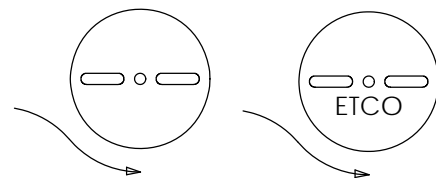
1. MATERIAL: .010 THICK BRASS
#4 TEMPER (FULL HARD)
PER ETCO METAL CODE 00010.
2. MATERIAL: .010 THICK PRE-TINNED BRASS
#4 TEMPER (FULL HARD)
PER ETCO METAL CODE XXXXX.
3. PARTS MAY BE COATED WITH A LIGHT FILM OF LUBRICATION USED IN THE MANUFACTURING PROCESS.
4. INSERTION/WITHDRAWAL FORCES ARE INDICATED ON THE QUALITY INSPECTION PLAN.
5. ACCEPTS A .032 X .110 NEMA STANDARD MALE.
6. WIRE RANGE: 24-18 AWG.

P/C	DESCRIPTION	MAT'L
07141	D50L-HB	NOTE 1
07146	D50L-1-HB	NOTE 1

Rev.	Description of Change/ SCN#	Date
1	SCN# 140299 SCJ ORG.ENG.DWG.DATE: 8-1-89	11-16-07
2	COMPLETED P/C LIST SCJ	7-23-08



DIRECTION EXITING TOOL,
EARS UP, CARRIER TO THE FRONT



DIRECTION TOWARD APPLICATOR,
EARS UP, CARRIER TO THE BACK

THIS PRINT IS THE PROPERTY OF ETCO INCORPORATED. NO PART OF THIS DESIGN MAY BE USED IN ANY WAY WITHOUT WRITTEN CONSENT FROM ETCO INCORPORATED.

UNCONTROLLED COPY

<p>THIRD ANGLE PROJECTION TOLERANCES UNLESS OTHERWISE SPECIFIED INCHES: .XX - ±.030 .XXX - ±.015 ANGLES: ±5°</p>	<p>TOOL NO. 0098</p>	<p>Title: .032 X .110 FEMALE DISCONNECT</p>		
		<p>DO NOT SCALE DWG.</p>	<p>Drawn By: S.JOHNSON</p>	<p>Date: 11-15-07</p>
<p>ETCO Incorporated Engineered Products 25 Bellows Street Warwick, RI 02888 Phone: (401) 467-2400 Fax: (401) 467-9230 www.ETCO.com</p>		<p>Chk'd/App'd By:</p>	<p>Scale: 12X</p>	<p>Size B</p>
		<p>Dwg. No.: D50L cust</p>		