
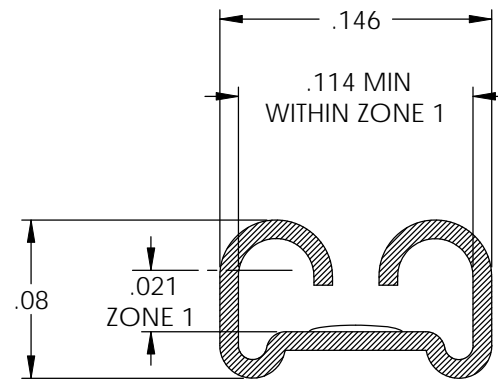
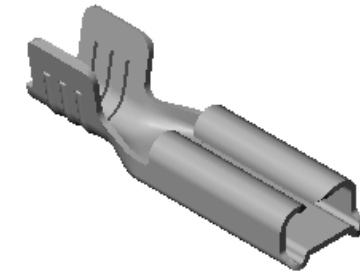
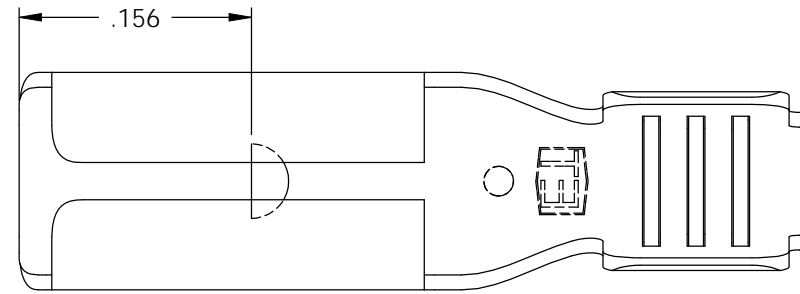


NOTES:

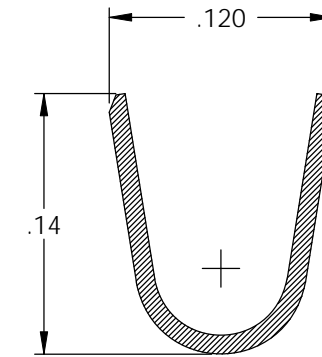
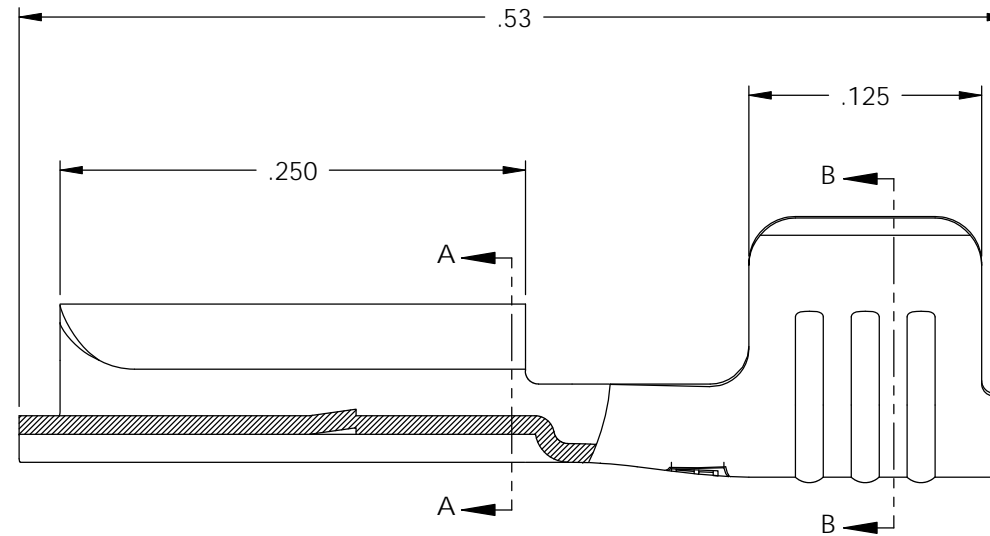
1. MATERIAL: .010 THICK BRASS  
#4 TEMPER (FULL HARD)  
PER ETCO METAL CODE 00010.
2. MATERIAL: .010 THICK PRETINNED BRASS  
#4 TEMPER (FULL HARD)  
PER ETCO METAL CODE 01022.
3. PARTS MAY BE COATED WITH A LIGHT FILM OF LUBRICATION USED IN THE MANUFACTURING PROCESS.
4. INSERTION/WITHDRAWAL FORCES ARE INDICATED ON THE QUALITY INSPECTION PLAN.
5. ACCEPTED MALE: .020 X .110.
6. WIRE RANGE: #16-#18 AWG.

P/C	DESCRIPTION	MAT'L	
07226	D58-THB	NOTE 2	X
07227	D58-HB	NOTE 1	X

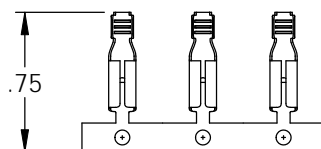
Rev.	Description of Change/ SCN#	Date
2	REDRAWN ON SOLIDWORKS ADDED P/Cs SCJ ORG.ENG.DWG.DATE: 4-2-92	8-23-06
3	SCN# 140204 SCJ	7-18-07



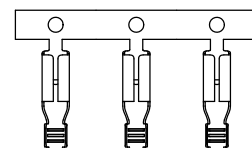
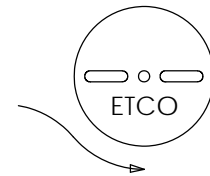
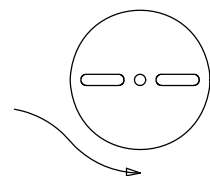
SECTION A-A  
SCALE 10 : 1



SECTION B-B  
SCALE 10 : 1





DIRECTION EXITING TOOL,  
EARS UP, TO THE BACK



DIRECTION TOWARD APPLICATOR,  
EARS UP, TO THE FRONT

# UNCONTROLLED COPY

 THIRD ANGLE PROJECTION TOLERANCES UNLESS OTHERWISE SPECIFIED INCHES: .XX - ±.030 .XXX - ±.015 ANGLES: ±5°	TOOL NO. <b>0096</b>	Title: <b>.110 FEMALE DISCONNECT</b>		
		DO NOT SCALE DWG.	Drawn By: <b>S.JOHNSON</b>	Date: <b>8-23-06</b>
ETCO Incorporated Engineered Products 25 Bellows Street Warwick, RI 02888 Phone: (401) 467-2400 Fax: (401) 467-9230 www.ETCO.com		Chk'd/App'd By:	Scale: <b>10X</b>	Size <b>B</b>
		Dwg. No.: <b>D58 cust</b>		