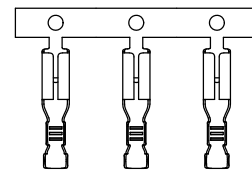
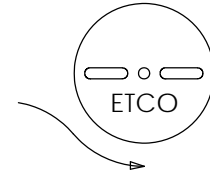
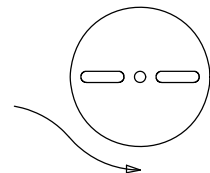
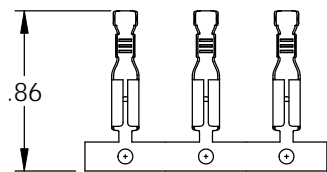
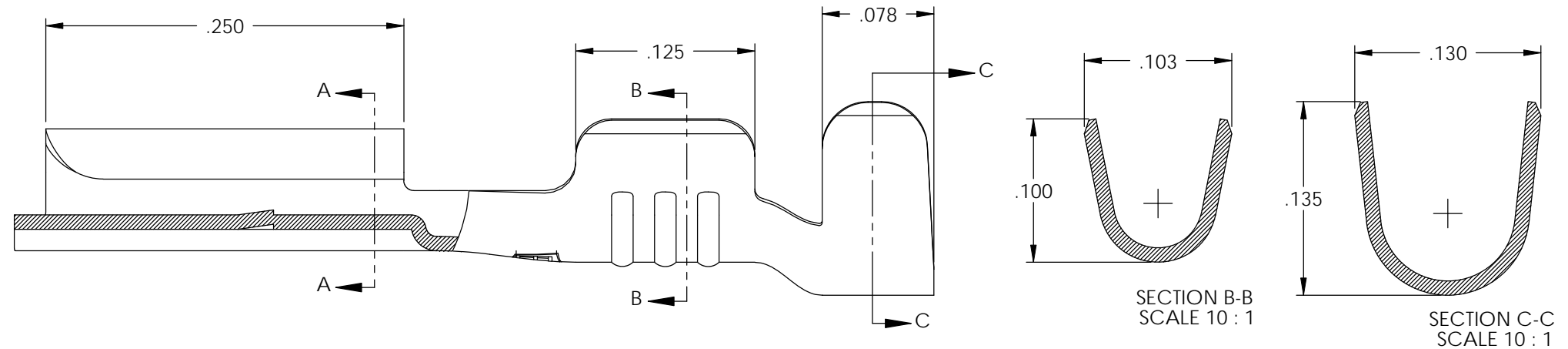
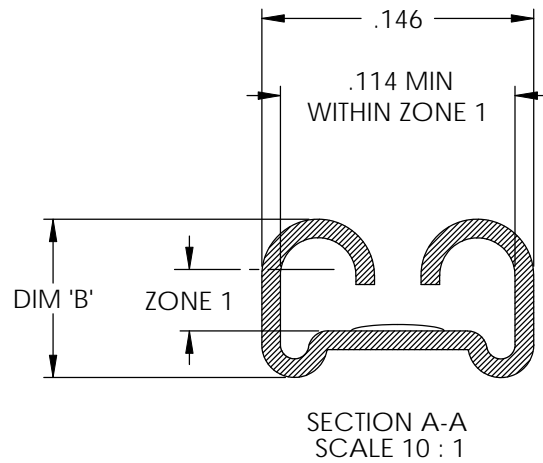
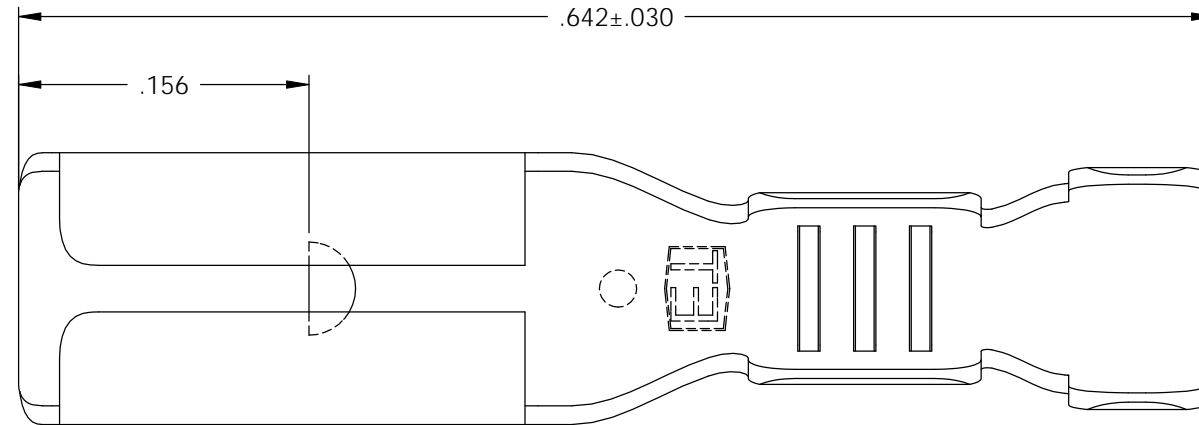
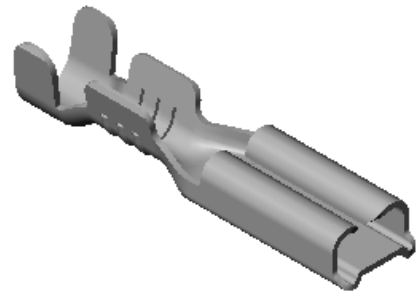


NOTES:

1. MATERIAL: .010 THICK BRASS  
#4 TEMPER (FULL HARD)  
PER ETCO METAL CODE 00018.
2. MATERIAL: .010 THICK PRETINNED BRASS  
#4 TEMPER (FULL HARD)  
PER ETCO METAL CODE 01024.
3. PARTS MAY BE COATED WITH A LIGHT FILM OF LUBRICATION USED IN THE MANUFACTURING PROCESS.
4. INSERTION/WITHDRAWAL FORCES ARE INDICATED ON THE QUALITY INSPECTION PLAN.
5. ACCEPTED NEMA STANDARD MALE: SEE CHART.
6. WIRE RANGE: #18-#22 AWG.
7. INSULATION DIAMETER RANGE:  $\phi$ .046- $\phi$ .096.

P/C	DESCRIPTION	ACCEPTED MALE	DIM 'B'	ZONE 1	MAT'L	UL	SP
07230	D60-HB	.032 X .110	.085 ± .030	.033	NOTE 1	X	X
07235	D60-030-HB	.030 X .110	.083 ± .030	.031	NOTE 1		
07236	D60-030-THB	.030 X .110	.083 ± .030	.031	NOTE 2		
07240	D60-THB	.032 X .110	.085 ± .030	.033	NOTE 2	X	X
07270	D62-HB	.020 X .110	.08	.021	NOTE 1	X	X
07280	D62-THB	.020 X .110	.08	.021	NOTE 2	X	X
07290	D64-HB	.016 X .110	.078 ± .030	.017	NOTE 1		X
07300	D64-THB	.016 X .110	.078 ± .030	.017	NOTE 2		X

Rev.	Description of Change/ SCN#	Date
2	REDRAWN ON SOLIDWORKS NO CHANGES SCJ ORG.ENG.DWG.DATE: 4-10-92	8-23-06
3	SCN# 140204 SCJ	7-18-07



DIRECTION TOWARD APPLICATOR,  
EARS UP, TO THE FRONT

DIRECTION EXITING TOOL,  
EARS UP, TO THE BACK

THIS PRINT IS THE PROPERTY OF ETCO INCORPORATED. NO PART OF THIS DESIGN MAY BE USED IN ANY WAY WITHOUT WRITTEN CONSENT FROM ETCO INCORPORATED.

# UNCONTROLLED COPY

<p>THIRD ANGLE PROJECTION TOLERANCES UNLESS OTHERWISE SPECIFIED INCHES: .XX - ±.030 .XXX - ±.015 ANGLES: ±5°</p>	<p>TOOL NO. <b>0096</b></p>	<p>Title: <b>.110 FEMALE DISCONNECT</b></p>		
		<p>DO NOT SCALE DWG.</p>	<p>Drawn By: <b>S.JOHNSON</b></p>	<p>Date: <b>8-23-06</b></p>
<p>ETCO Incorporated Engineered Products 25 Bellows Street Warwick, RI 02888 Phone: (401) 467-2400 Fax: (401) 467-9230 www.ETCO.com</p>		<p>Chk'd/App'd By:</p>	<p>Scale: <b>10X</b></p>	<p>Size <b>B</b></p>
		<p>Dwg. No.: <b>D60, D60-30, D62, D64 cust</b></p>		