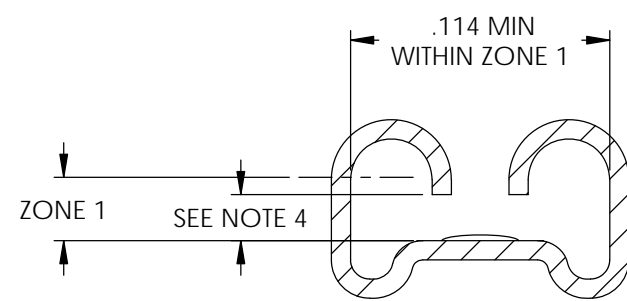
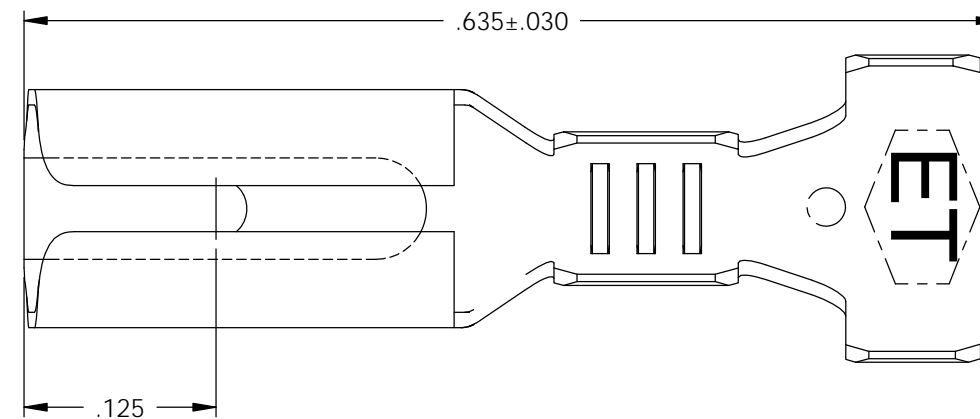
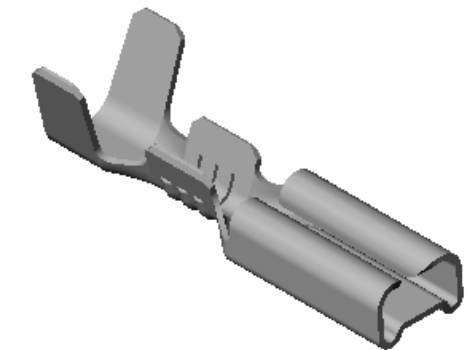


NOTE:

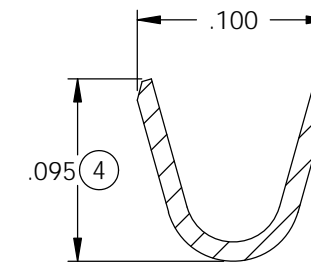
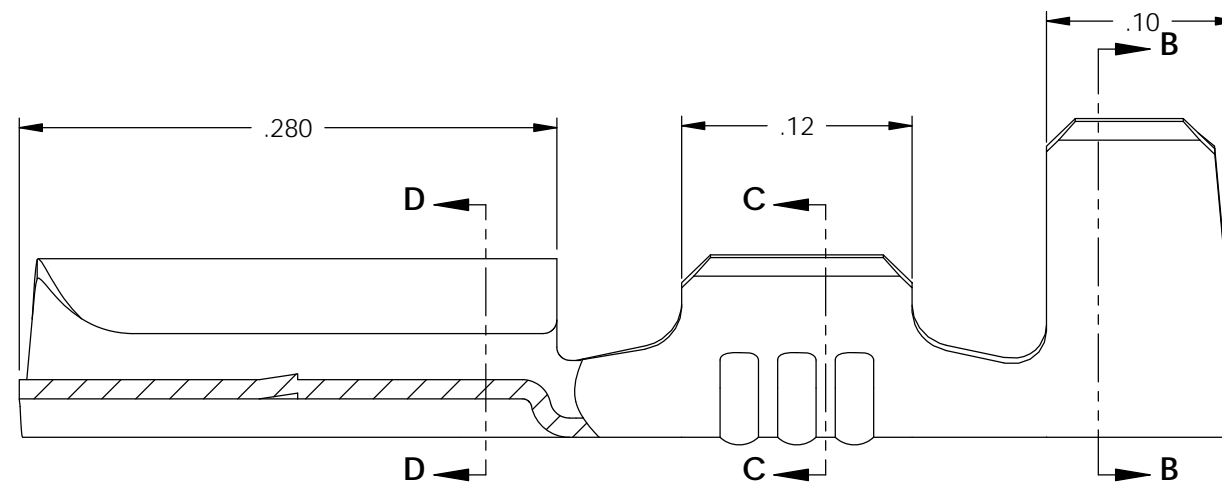
- 1.) MAT'L: .010 THK., BRASS, #4 TEMPER (FULL HARD), PER ETCO METAL CODE NO. 00074.
- 2.) MAT'L: .010 THK., PRE-TINNED BRASS, #4 TEMPER (FULL HARD), PER ETCO METAL CODE NO. 01037.
- 3.) PARTS MAY BE COATED WITH A LIGHT FILM OF LUBRICATION USED IN THE MANUFACTURING PROCESS.
- 4.) ACCEPTED NEMA STANDARD MALE: SEE CHART.
- 5.) WIRE RANGE: 22-18 AWG.
- 6.) INSULATION RANGE:  $\varnothing$ .060-.115.

P/C	DESCRIPTION	ACCEPTED MALE	ZONE 1	MAT'L	UL	RA	SE
07231	D60E-HB	.032 X .110	.033	NOTE 1		X	X
07274	D60E-THB	.032 X .110	.033	NOTE 2		X	X
07229	D62E-HB	.020 X .110	.021	NOTE 1	X		X
07275	D62E-THB	.020 X .110	.021	NOTE 2	X		X
07286	D64E-HB	.016 X .110	.017	NOTE 1			
07285	D64E-THB	.016 X .110	.017	NOTE 2			
07319	D66E-HB	.012 X .110	.013	NOTE 1		X	
07318	D66E-THB	.012 X .110	.013	NOTE 2		X	

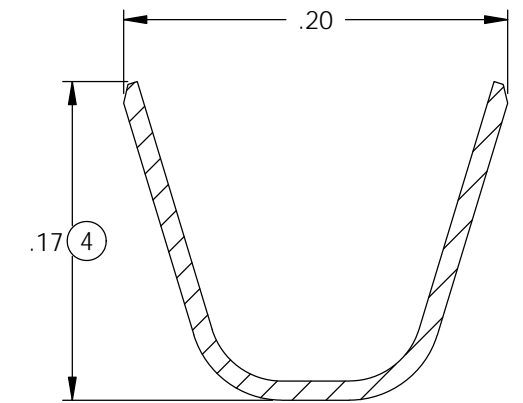
Rev.	Description of Change/ SCN#	Date
1	SCN# 103087 SCJ ORG.ENG.DWG.DATE: 10-16-91	11-30-05
2	SCN# 140264 SCJ	11-6-07
3	ECR# 844 SCJ	9-27-11
4	ECR# 2422 SCJ	8/06/13
4	ECR# 5146 SCJ	6/21/18



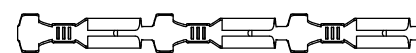
SECTION D-D  
SCALE 10 : 1



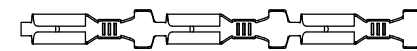
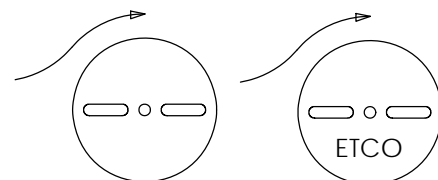
SECTION C-C  
SCALE 10 : 1



SECTION B-B  
SCALE 10 : 1



DIRECTION EXITING TOOL,  
EARS UP, TO THE LEFT



DIRECTION TOWARD APPLICATOR,  
EARS UP, TO THE RIGHT

THIS PRINT IS THE PROPERTY OF ETCO INCORPORATED. NO PART OF THIS DESIGN MAY BE USED IN ANY WAY WITHOUT WRITTEN CONSENT FROM ETCO INCORPORATED.

# UNCONTROLLED COPY

<p>THIRD ANGLE PROJECTION TOLERANCES UNLESS OTHERWISE SPECIFIED INCHES: .XX - <math>\pm</math>.030 .XXX - <math>\pm</math>.015 ANGLES: <math>\pm</math>5°</p>	<p>TOOL NO. <b>0013</b></p>	<p>Title: <b>.020 X .110 FEMALE DISCONNECT</b></p>		
		<p>DO NOT SCALE DWG.</p>	<p>Drawn By: S.JOHNSON</p>	<p>Date: 11-30-05</p>
<p>ETCO Incorporated Engineered Products 25 Bellows Street Warwick, RI 02888 Phone: (401) 467-2400 Fax: (401) 467-9230 www.ETCO.com</p>		<p>Chk'd/App'd By:</p>	<p>Scale: 10X</p>	<p>Size B</p>
		<p>Dwg. No.:</p>	<p><b>D60E, D62E, D64E, D66E cust</b></p>	