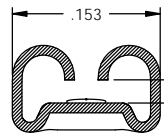
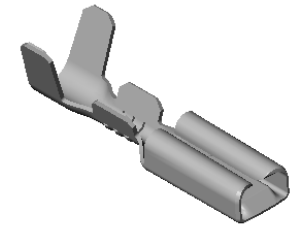
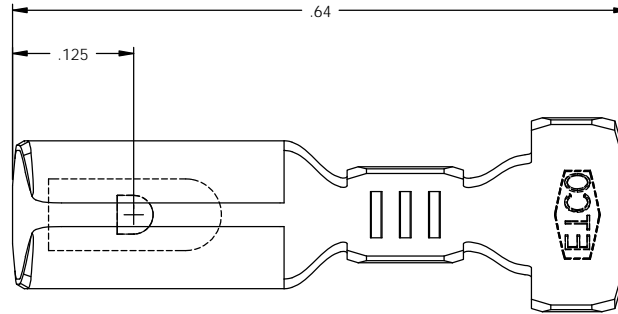


NOTES:

1. MATERIAL: .010 THICK BRASS
#4 TEMPER (FULL HARD)
PER ETCO METAL CODE 00032.
2. MATERIAL: .010 THICK PRE-TINNED BRASS
#4 TEMPER (FULL HARD)
PER ETCO METAL CODE 01069.
3. PARTS MAY BE COATED WITH A LIGHT FILM OF LUBRICATION USED IN THE MANUFACTURING PROCESS.
4. INSERTION/WITHDRAWAL FORCES ARE INDICATED ON THE QUALITY INSPECTION PLAN.
5. ALL CORNERS SHOWN SHARP MAY HAVE A .010 MAX RAD.
6. ACCEPTED MALE: SEE CHART.
7. WIRE RANGE: 18-22 AWG.
8. INSUL RANGE: Ø .100-.130.

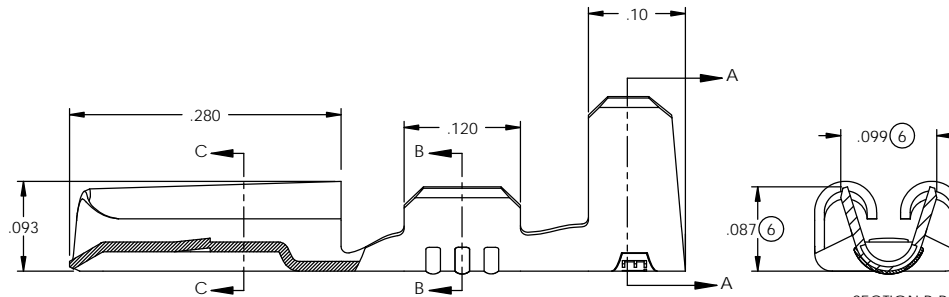
| P/C | DESCRIPTION | ACCEPTED MALE | MAT'L | UL | SP | |
|-------|-------------|---------------|--------|----|----|-----|
| 07101 | D60N-HB | .032 X .110 | NOTE 1 | X | | (2) |
| 07102 | D60N-THB | .032 X .110 | NOTE 2 | X | | (2) |
| 07104 | D62N-HB | .020 X .110 | NOTE 1 | X | | (2) |
| 07105 | D62N-THB | .020 X .110 | NOTE 2 | X | | (2) |

| Rev. | Description of Change/ SCN# | Date |
|------|------------------------------|---------|
| - | INITIAL CUST DWG RELEASE JMR | 6/11/08 |
| 1 | ECR #513 SCJ | 2/10/11 |
| 2 | ECR #520 JMR | 2/11/11 |
| 3 | ECR #715 JMR | 5/11/11 |
| 4 | ECR #1666 SCJ | 9/19/12 |
| 5 | ECR #2096 SCJ | 3/27/13 |
| 6 | ECR #2161 SCJ | 4/22/13 |

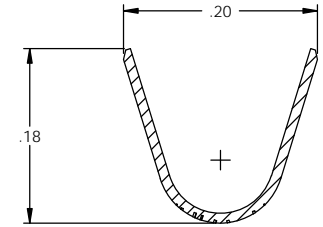


SECTION C-C
SCALE 8 : 1

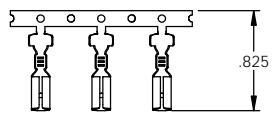
SEE "ACCEPTED MALE"



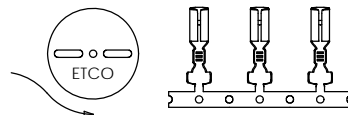
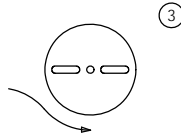
SECTION B-B
SCALE 8 : 1



SECTION A-A
SCALE 8 : 1



DIRECTION EXITING TOOL,
EARS UP, CARRIER TO THE FRONT



DIRECTION TOWARD APPLICATOR,
EARS UP, CARRIER TO THE FRONT

UNCONTROLLED COPY

| | | | | |
|---|---|---|------------------------------|----------------|
| <p>THIRD ANGLE PROJECTION TOLERANCES UNLESS OTHERWISE SPECIFIED INCHES: .XX - ± .030 .XXX - ± .015 ANGLES: ± 5°</p> | <p>TOOL NO. 0794</p> | <p>Title: .110" DISCONNECT TERMINAL</p> | | |
| | <p>DO NOT SCALE DWG.</p> | <p>Drawn By: J. RAMALHO</p> | <p>Date: 6/11/08</p> | |
| | <p>ETCO Incorporated Engineered Products 25 Bellows Street Warwick, RI 02888 Phone: (401) 467-2400 Fax: (401) 467-9230 www.ETCO.com</p> | <p>Chk'd/App'd By:</p> | <p>Scale: 8X</p> | <p>Size: B</p> |
| | | <p>Dwg. No.:</p> | <p>D60N & D62N cust.</p> | |