

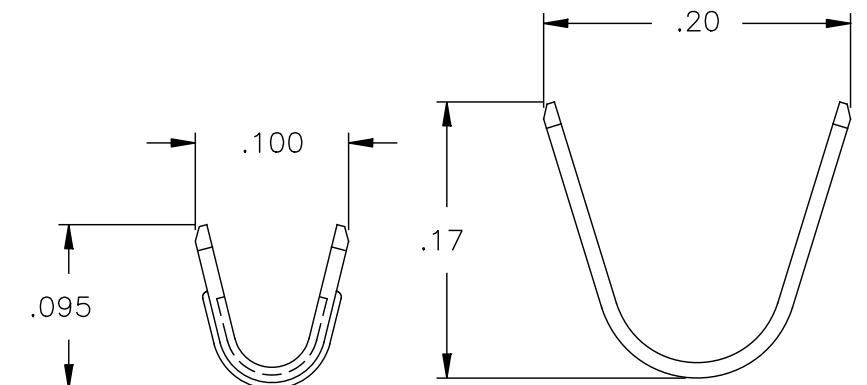
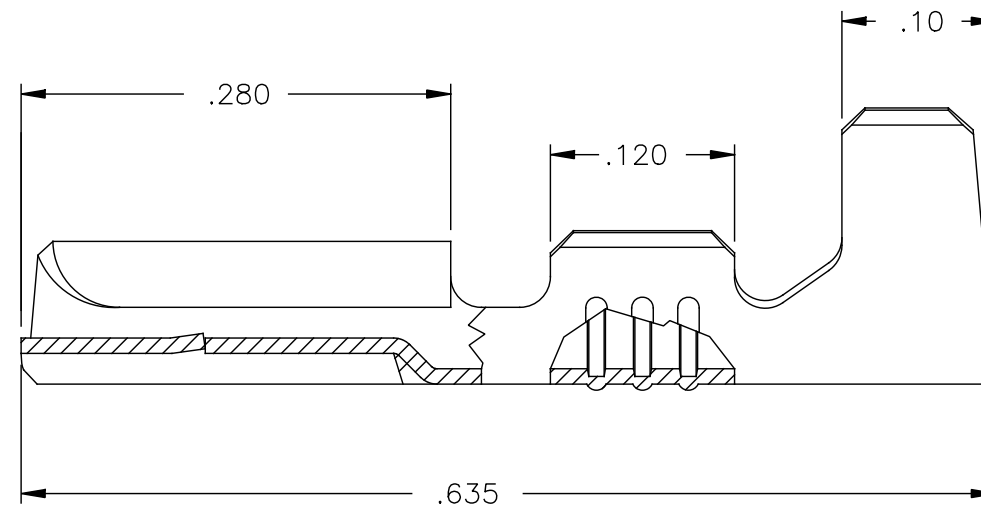
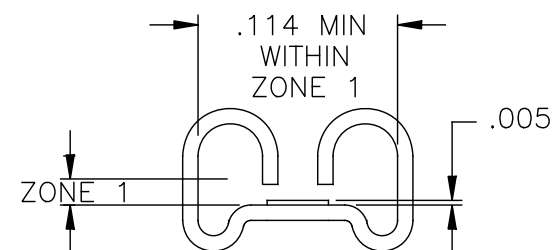
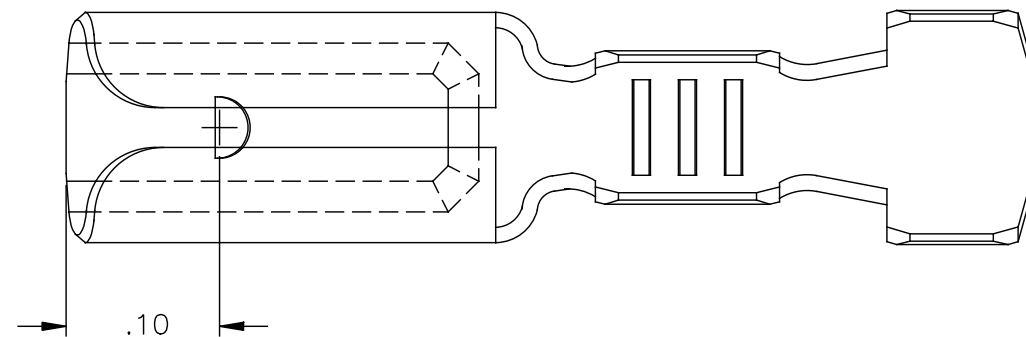
NOTE:

- 1.) MAT'L: .010 THK, BRASS, #4 TEMPER (FULL HARD), PER ETCO METAL CODE NO. 00074.
- 2.) MAT'L: .010 THK, PRE-TINNED BRASS, #4 TEMPER (FULL HARD), PER ETCO METAL CODE NO. 01037.
- 3.) PARTS MAY BE COATED WITH A LIGHT FILM OF LUBRICATION USED IN THE MANUFACTURING PROCESS.
- 4.) INSERTION/WITHDRAWAL FORCES ARE INDICATED ON THE QUALITY INSPECTION RECORD.
- 5.) WIRE RANGE: 22-18 AWG.
- 6.) INSUL RANGE:  $\phi$ .060- $\phi$ .115.

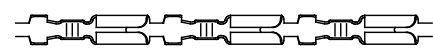


P/C	DESCRIPTION	ACCEPTED MALE	DIM 'A'	ZONE 1	MAT'L
07292	D64E-HN-HB	.016 x .110	.0145-.0115	.017	NOTE 1
07293	D64E-HN-THB	.016 x .110	.0145-.0115	.017	NOTE 2
07295	D66E-HN-HB	.012 x .110	.0105-.0075	.013	NOTE 1
07296	D66E-HN-THB	.012 x .110	.0105-.0075	.013	NOTE 2

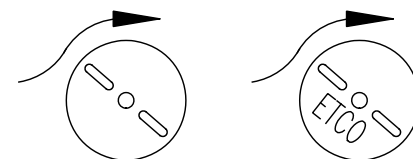
Rev.	Description of Change/ SCN#	Date
1	INITIAL RELEASE SCJ	7-2-08
2	ECR# 2422 SCJ	8/06/13
2	ECR# 5146 SCJ	6/21/18



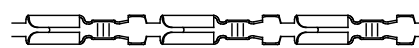
(X) NUMBER INSIDE REFERS TO REVISION LEVEL DIMENSION WAS CHANGED ON  
 (X) NUMBER INSIDE REFERS TO I.D. CODE ON QUALITY INSPECTION RECORD



DIRECTION EXITING TOOL,  
EAR UP, TO THE LEFT



FULL VIEW  
REFERENCE ONLY



DIRECTION TOWARD APPLICATOR,  
EARS UP, TO THE RIGHT

# UNCONTROLLED COPY

<p>THIRD ANGLE PROJECTION</p> <p>TOLERANCES UNLESS OTHERWISE SPECIFIED</p> <p>.XX - <math>\pm</math>.010</p> <p>.XXX - <math>\pm</math>.005</p> <p>Angles - <math>\pm</math>2°</p>	<p>TOOL NO.</p> <p>0013</p>	<p>Title: FEMALE DISCONNECT</p>		
		<p>DO NOT SCALE DWG.</p>	<p>Drawn By: SCJ</p>	<p>Date: 7-2-08</p>
<p>ETCO Incorporated Engineered Products 25 Bellows Street Warwick, R.I. 02888 Phone: (401)467-2400 FAX: (401)467-9230 www.ETCO.com</p>		<p>Chk'd/App'd By:</p>	<p>Scale: 8:1</p>	<p>Size B</p>
		<p>Dwg. No.: D64E-HN&amp;D66E-HN cust</p>		