
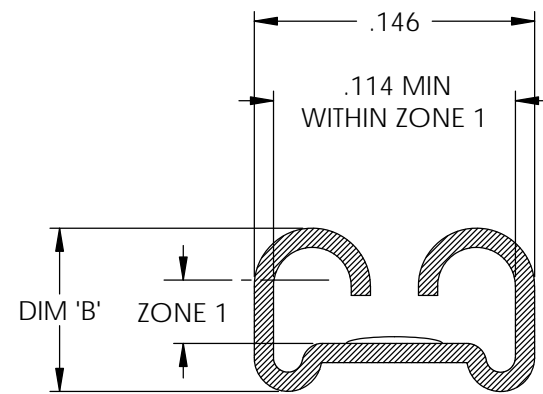
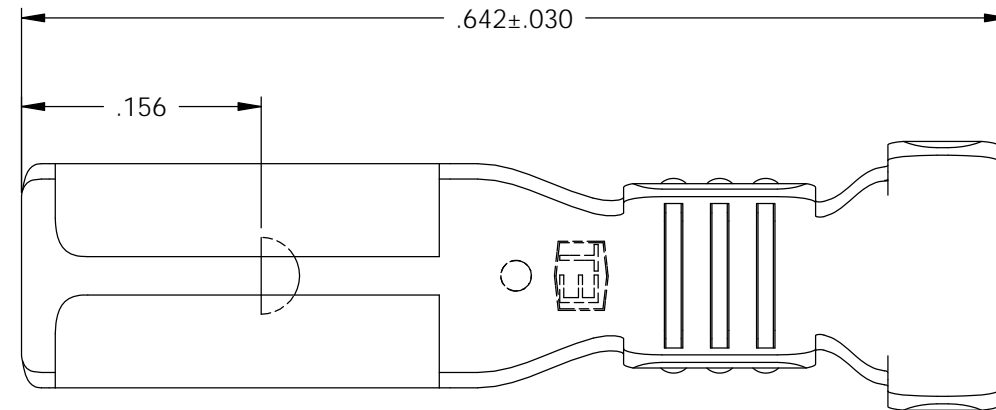
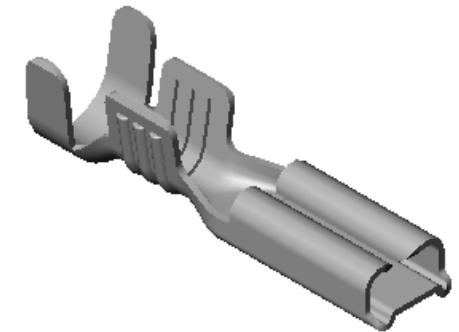


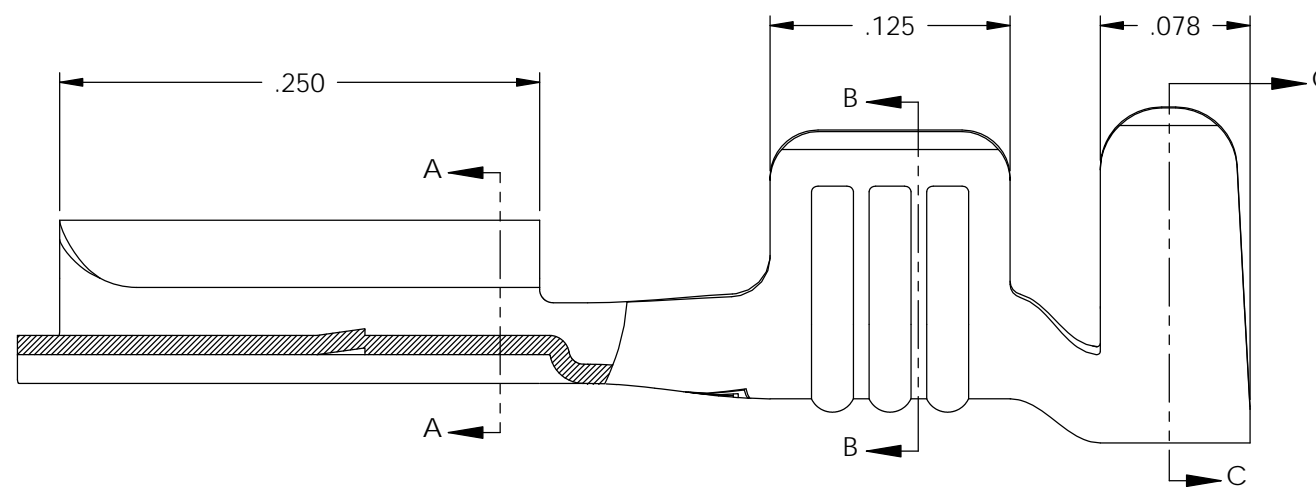
- NOTES:
1. MATERIAL: .010 THICK BRASS  
#4 TEMPER (FULL HARD)  
PER ETCO METAL CODE 00018.
  2. MATERIAL: .010 THICK PRETINNED BRASS  
#4 TEMPER (FULL HARD)  
PER ETCO METAL CODE 01024.
  3. PARTS MAY BE COATED WITH A LIGHT FILM OF LUBRICATION USED IN THE MANUFACTURING PROCESS.
  4. INSERTION/WITHDRAWAL FORCES ARE INDICATED ON THE QUALITY INSPECTION PLAN.
  5. WIRE RANGE: #16-#18 AWG.
  6. INSULATION DIAMETER RANGE:  $\phi$ .100- $\phi$ .130. (4)

P/C	DESCRIPTION	ACCEPTED MALE	DIM 'B'	ZONE 1	MAT'L	
07325	D68-HB	.020 X .110	.08	.021	NOTE 1	X
07326	D68-THB	.020 X .110	.08	.021	NOTE 2	X
07356	D69-HB	.032 X .110	.085 ± .030	.033	NOTE 1	
07357	D69-THB	.032 X .110	.085 ± .030	.033	NOTE 2	

Rev.	Description of Change/ SCN#	Date
1	REDRAWN ON SOLIDWORKS ADDED P/Cs SCJ ORG.ENG.DWG.DATE: 4-10-92	8-23-06
2	SCN# 140204 SCJ	7-18-07
3	SCN# 140283 SCJ	11-6-07
4	ECR# 2975 SCJ	4/17/14
4	Added D69 P/Cs SCJ	3/22/17

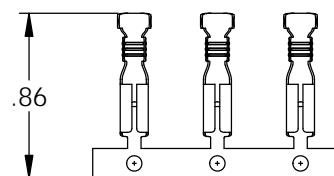


SECTION A-A  
SCALE 10 : 1

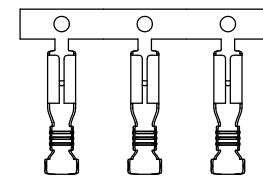
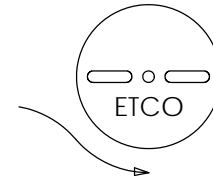
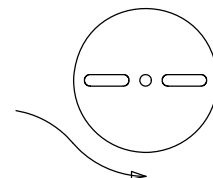


SECTION B-B  
SCALE 10 : 1

SECTION C-C  
SCALE 10 : 1



DIRECTION EXITING TOOL,  
EARS UP, TO THE BACK



DIRECTION TOWARD APPLICATOR,  
EARS UP, TO THE FRONT

## UNCONTROLLED COPY

THIRD ANGLE PROJECTION  
TOLERANCES UNLESS OTHERWISE SPECIFIED  
INCHES: .XX - ±.030  
.XXX - ±.015  
ANGLES: ±5°

TOOL NO.  
**0096**



Title: **.110 FEMALE DISCONNECT**

DO NOT SCALE DWG.

ETCO Incorporated  
Engineered Products  
25 Bellows Street  
Warwick, RI 02888  
Phone: (401) 467-2400  
Fax: (401) 467-9230  
www.ETCO.com

Drawn By: **S.JOHNSON**

Chk'd/App'd By:

Scale:  
**10X**

Size  
**B**

Date: **8-23-06**

Dwg. No.:

**D68 and D69 cust**