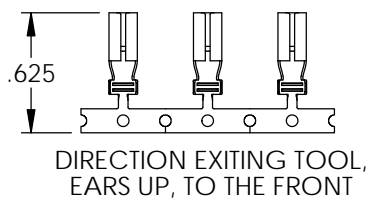
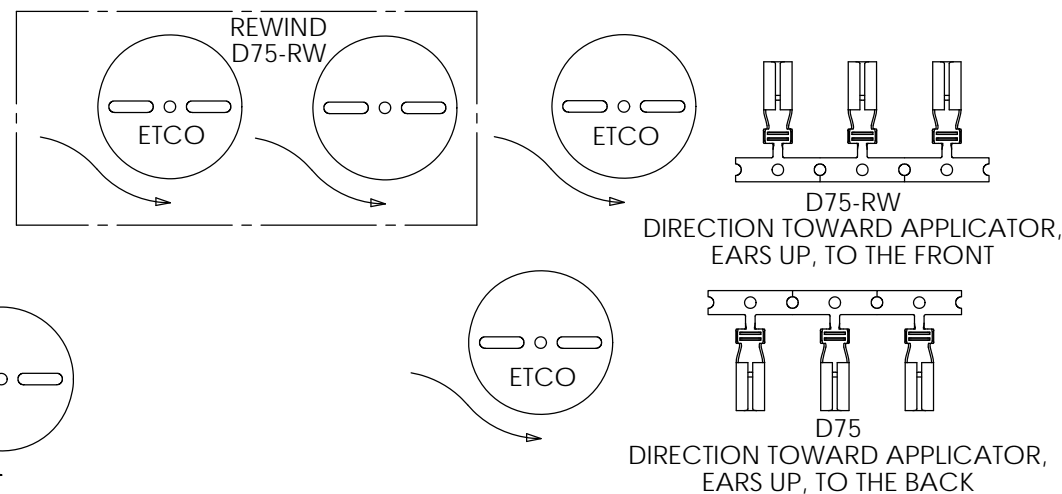
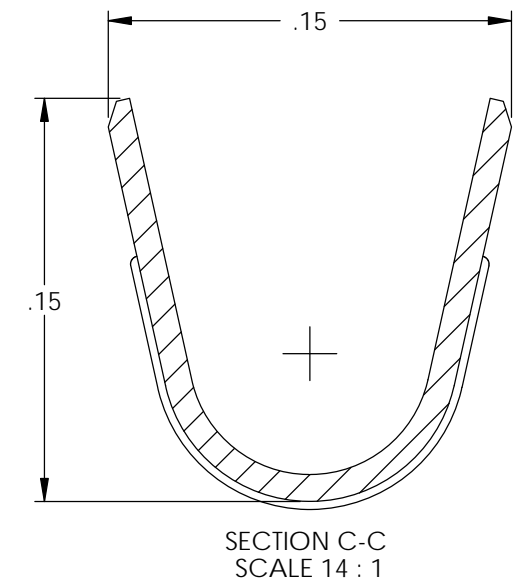
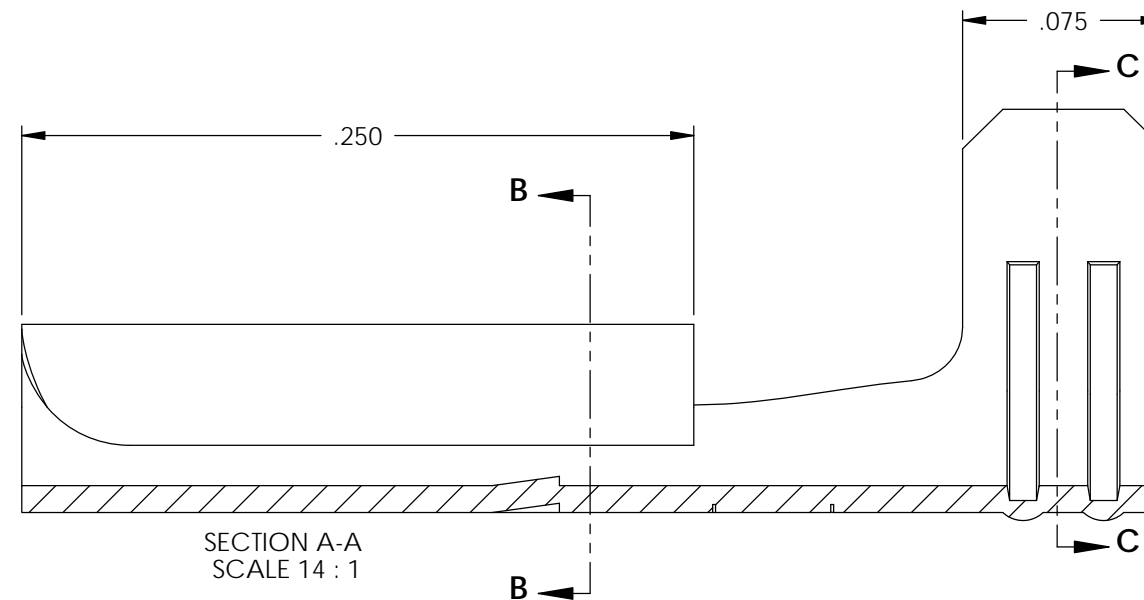
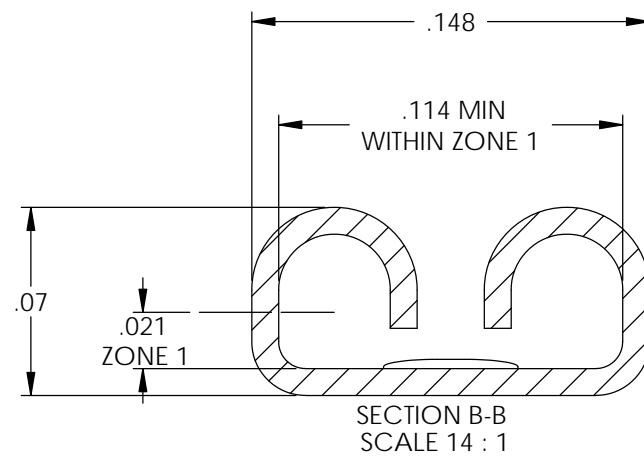
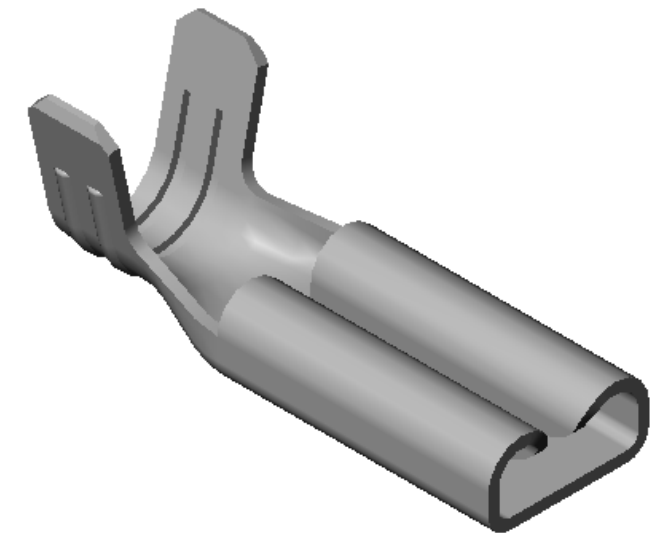
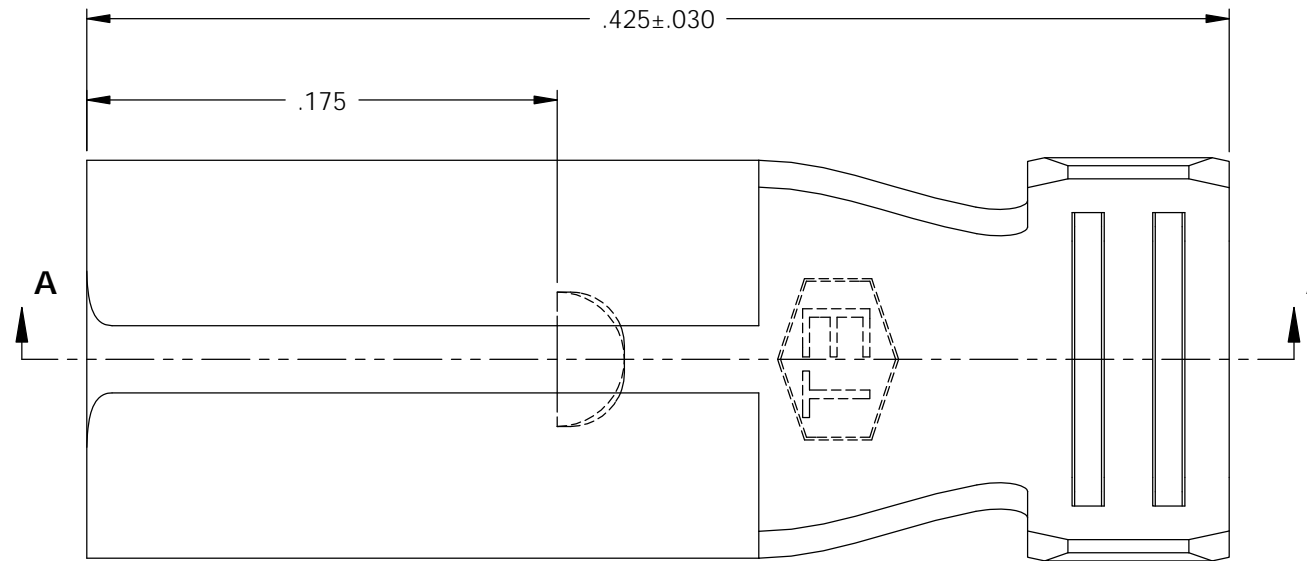


NOTE:

- 1.) MAT'L: .010 THK, BRASS, #4 TEMPER (FULL HARD) PER ETCO METAL CODE NO. 05007.
- 2.) MAT'L: .010 THK, PRE-TINNED BRASS, #4 TEMPER (FULL HARD) PER ETCO METAL CODE NO. 05204.
- 3.) PARTS MAY BE COATED WITH A LIGHT FILM OF LUBRICATION USED IN THE MANUFACTURING PROCESS.
- 4.) INSERTION/WITHDRAWAL FORCES ARE INDICATED ON THE QUALITY INSPECTION RECORD.
- 5.) MATING PART: .020 X .110 NEMS STANDARD MALE TAB.
- 6.) WIRE RANGE: (2) 18 AWGs.

P/C	DESCRIPTION	MAT'L	REWIND
07332	D75-HB	NOTE 1	NO
07333	D75-THB	NOTE 2	NO
07344	D75-RW-THB	NOTE 2	YES

Rev.	Description of Change/ SCN#	Date
1	SCN# 103149 & SCN# 103149 SCJ ORG.ENG.DWG.DATE: 9-24-92	3-11-06
2	COMPLETED P/C LIST SCJ	7-24-08
3	ECR# 4462 SCJ	11/29/16



UNCONTROLLED COPY

THIRD ANGLE PROJECTION
TOLERANCES UNLESS OTHERWISE SPECIFIED
INCHES: .XX - ±.030
.XXX - ±.015
ANGLES: ±5°

TOOL NO.
0574

Title: **.020 X .110 FEMALE DISCONNECT**

DO NOT SCALE DWG. Drawn By: S.JOHNSON Date: 3/10/06

Chk'd/App'd By: Scale: 14X Size B

Dwg. No.: **D75 cust**

ETCO Incorporated
Engineered Products
25 Bellows Street
Warwick, RI 02888
Phone: (401) 467-2400
Fax: (401) 467-9230
www.ETCO.com