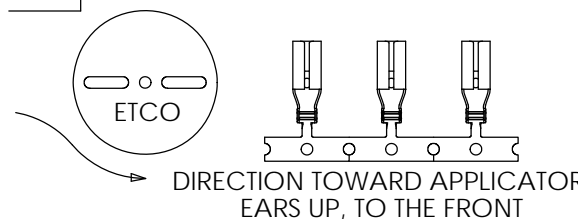
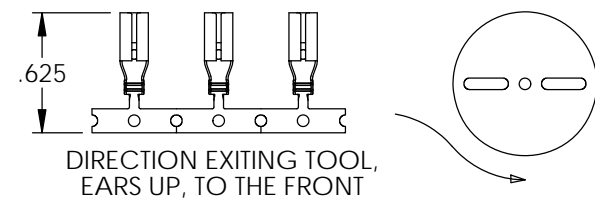
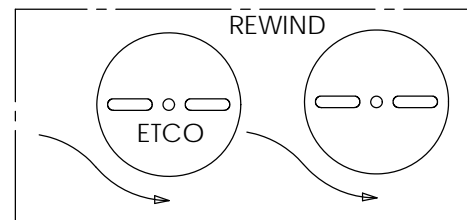
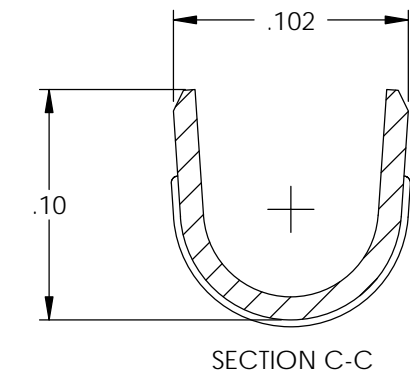
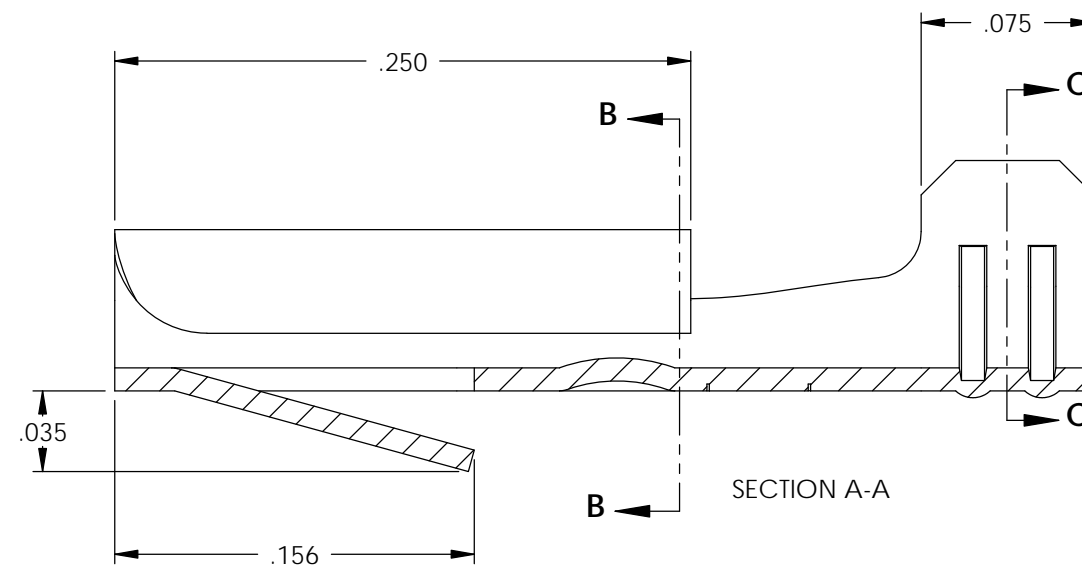
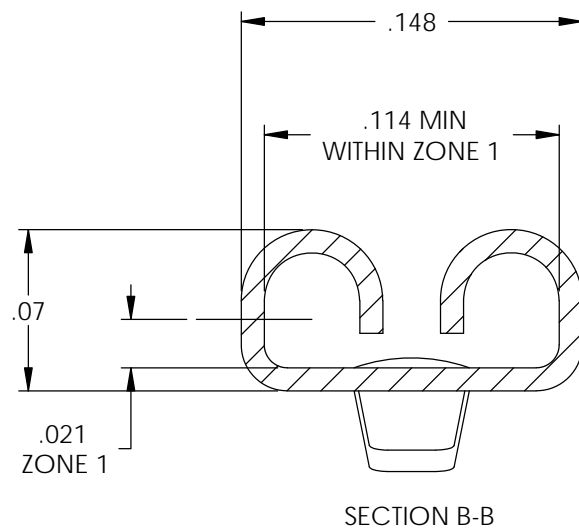
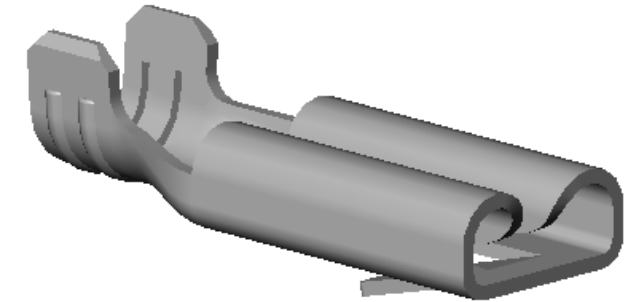
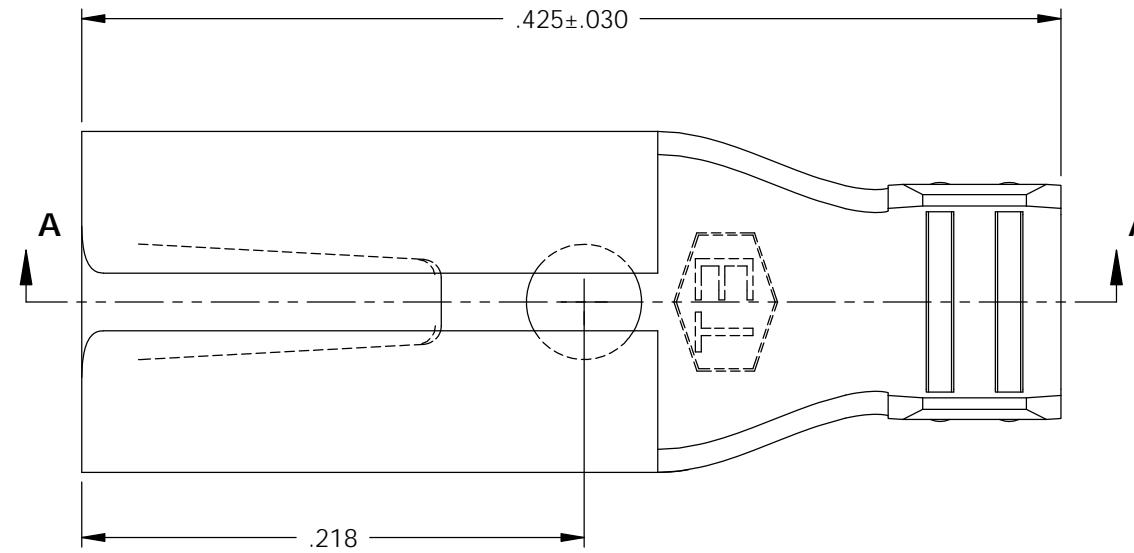


NOTE:

- 1.) MAT'L: .010 THK, PRE-TINNED BRASS, #4 TEMPER (FULL HARD) PER ETCO METAL CODE NO. 05204.
- 2.) PARTS MAY BE COATED WITH A LIGHT FILM OF LUBRICATION USED IN THE MANUFACTURING PROCESS.
- 3.) INSERTION/WITHDRAWAL FORCES ARE INDICATED ON THE QUALITY INSPECTION RECORD.
- 4.) MATING PART: .020 X .110 NEMS STANDARD MALE TAB.
- 5.) WIRE RANGE: 22-18 AWG.

P/C	DESCRIPTION	REWIND
07355	D79L-THB	YES

Rev.	Description of Change/ SCN#	Date
1	SCN# 103149 SCJ ORG.ENG.DWG.DATE: 9-18-96	3-11-06
2	ECR# 4462 SCJ	11/29/16



THIS PRINT IS THE PROPERTY OF ETCO INCORPORATED. NO PART OF THIS DESIGN MAY BE USED IN ANY WAY WITHOUT WRITTEN CONSENT FROM ETCO INCORPORATED.

# UNCONTROLLED COPY

<p>THIRD ANGLE PROJECTION TOLERANCES UNLESS OTHERWISE SPECIFIED INCHES: .XX - ±.030 .XXX - ±.015 ANGLES: ±5°</p>	<p>TOOL NO. <b>0574</b></p>	<p>Title: <b>.020 X .110 FEMALE DISCONNECT</b></p>		
		<p>DO NOT SCALE DWG.</p>	<p>Drawn By: S.JOHNSON</p>	<p>Date: 3/13/06</p>
<p>ETCO Incorporated Engineered Products 25 Bellows Street Warwick, RI 02888 Phone: (401) 467-2400 Fax: (401) 467-9230 www.ETCO.com</p>		<p>Chk'd/App'd By:</p>	<p>Scale: 12X</p>	<p>Size B</p>
		<p>Dwg. No.: <b>D79L cust</b></p>		