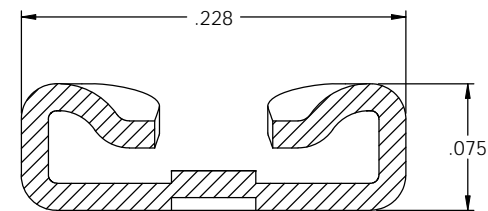
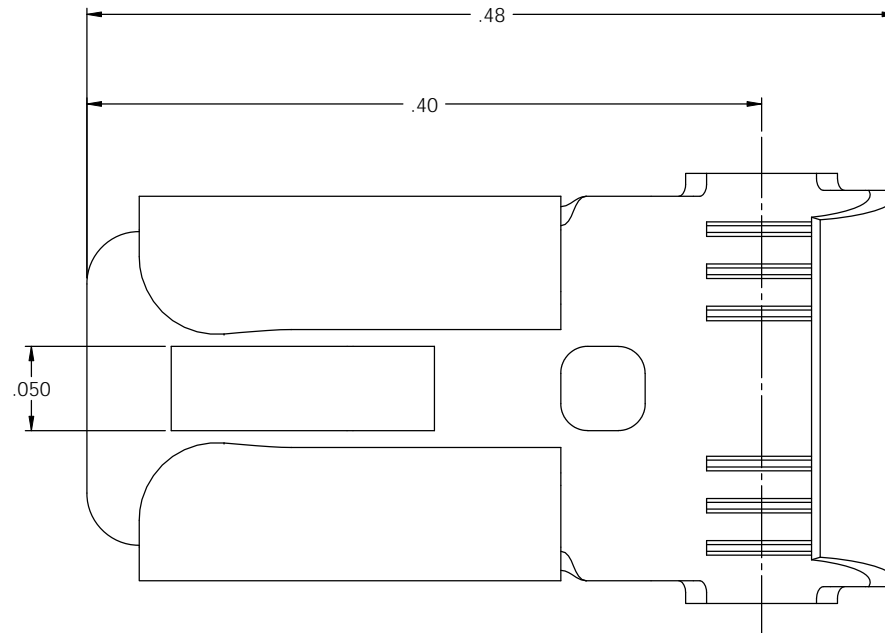
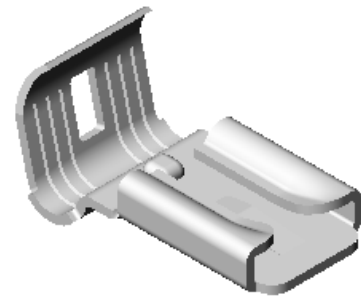


NOTES:

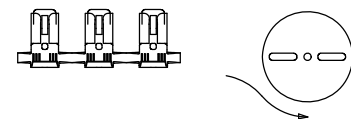
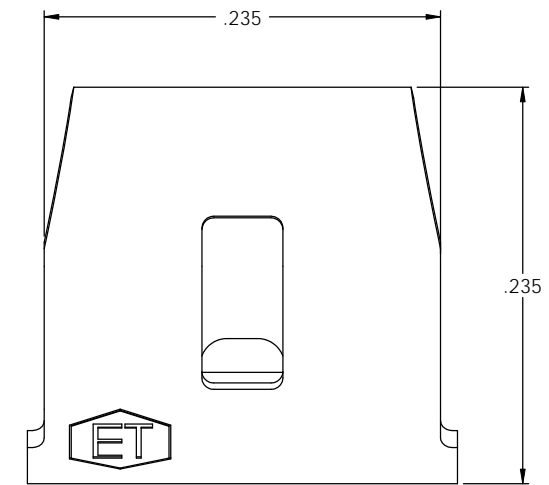
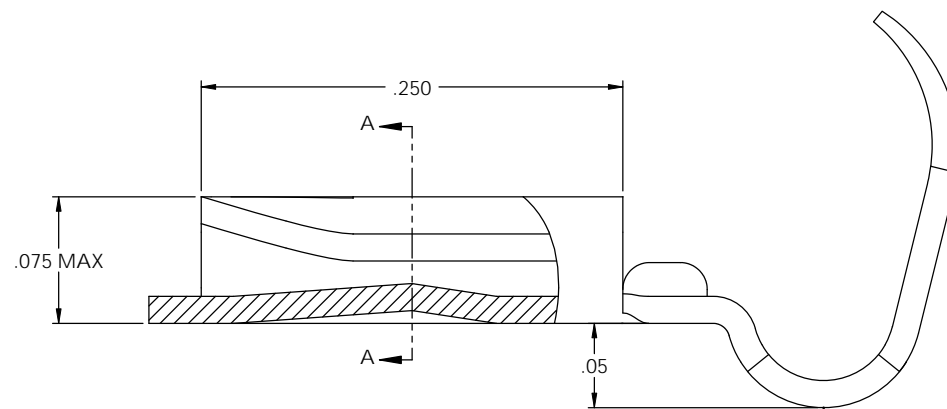
1. MATERIAL: .016 THICK, BRASS, #4 TEMPER (FULL HARD), PER ETCO METAL CODE 05027.
2. MATERIAL: .016 THICK, PRE-TINNED BRASS, #4 TEMPER (FULL HARD), PER ETCO METAL CODE 01181.
3. MATERIAL: .016 THICK, NICKEL PLATED STEEL, #2 TEMPER (1/2 HARD), PER ETCO METAL CODE 03112.
4. PARTS MAY BE COATED WITH A LIGHT FILM OF LUBRICATION USED IN THE MANUFACTURING PROCESS.
5. INSERTION/WITHDRAWAL FORCES ARE INDICATED ON THE QUALITY INSPECTION PLAN.
6. ACCEPTED MALE: .020 X .187 NEMA STANDARD MALE.
7. WIRE RANGE: 16-20 AWG.

P/C	DESCRIPTION	MAT'L	UL	SP
07740	DF110-HB	NOTE 1	X	X
07750	DF110-THB	NOTE 2	X	X
07751	DF110-NPS	NOTE 3		

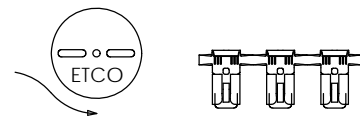
Rev.	Description of Change/ SCN#	Date
1	SCN# 140330 SCJ ORG.ENG.DWG.DATE: 10-3-67	2-14-08



SECTION A-A
SCALE 14 : 1



DIRECTION EXITING TOOL,
EARS UP, TO THE FRONT



DIRECTION TOWARD APPLICATOR,
EARS UP, TO THE BACK

THIS PRINT IS THE PROPERTY OF ETCO INCORPORATED. NO PART OF THIS DESIGN MAY BE USED IN ANY WAY WITHOUT WRITTEN CONSENT FROM ETCO INCORPORATED.

UNCONTROLLED COPY

 THIRD ANGLE PROJECTION	TOOL NO. 0605	Title: .020 x .187 FEMALE FLAG DISCONNECT	
	TOLERANCES UNLESS OTHERWISE SPECIFIED INCHES: XX - ±.030 XXX - ±.015 ANGLES: ±5°	DO NOT SCALE DWG. 	Drawn By: S.JOHNSON Chk'd/App'd By:
ETCO Incorporated Engineered Products 25 Bellows Street Warwick, RI 02888 Phone: (401) 467-2400 Fax: (401) 467-9230 www.ETCO.com		Dwg. No.: DF110 cust	