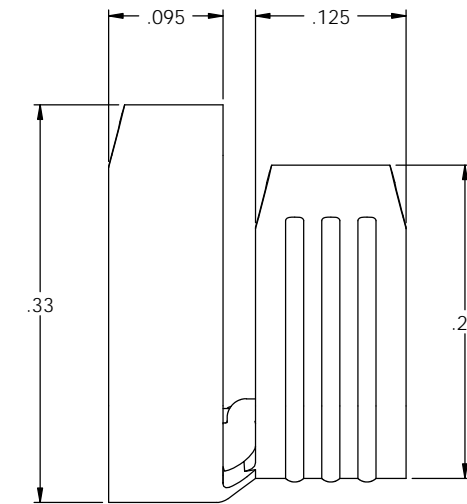
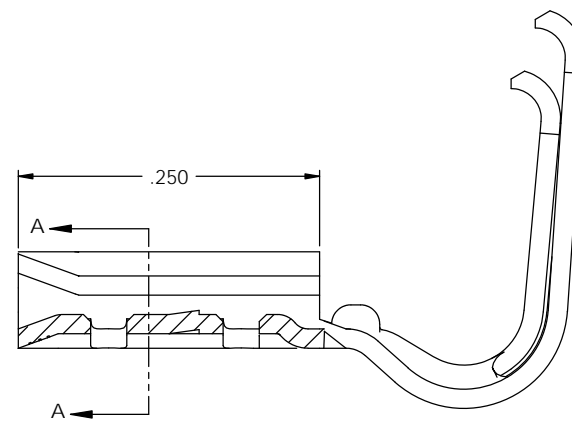
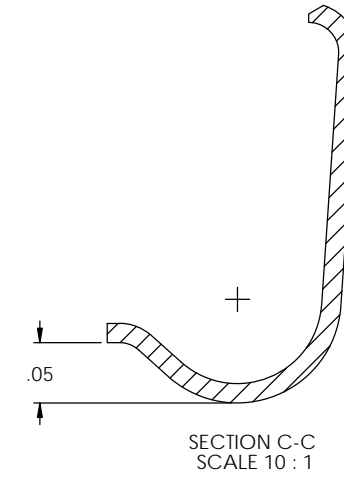
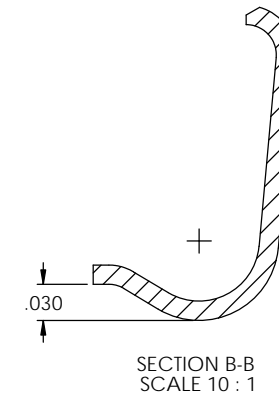
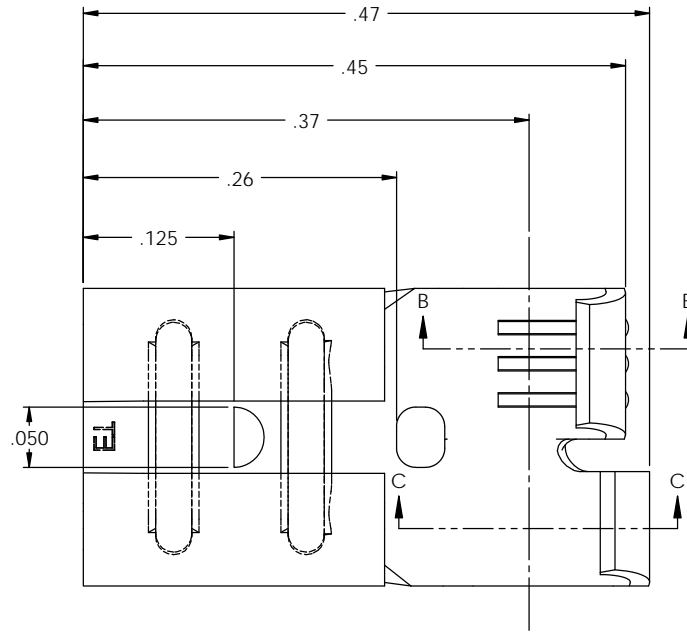
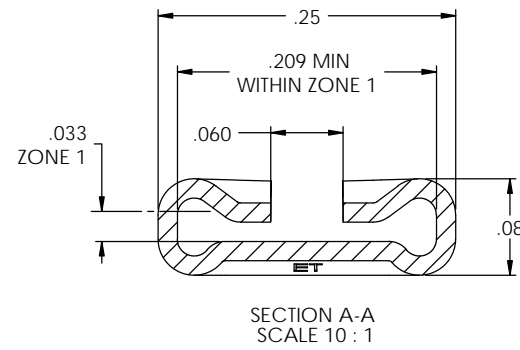
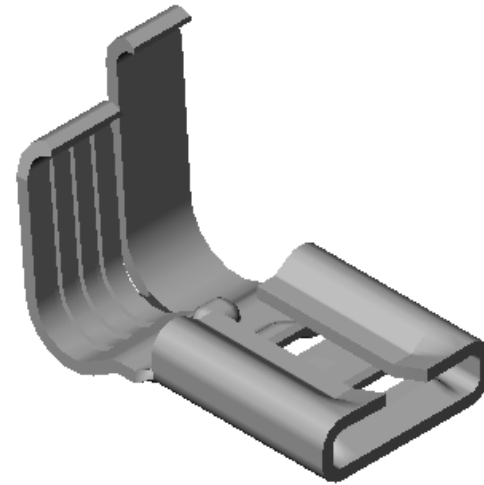


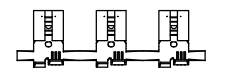
NOTES:

- MATERIAL: .016 THICK BRASS
#4 TEMPER (FULL HARD)
PER ETCO METAL CODE 05036.
- MATERIAL: .016 THICK PRE-TINNED BRASS
#4 TEMPER (FULL HARD)
PER ETCO METAL CODE 05236.
- MATERIAL: .016 THICK PRE-NICKEL PLATED STEEL
#2 TEMPER (1/2 HARD)
PER ETCO METAL CODE 03130.
- PARTS MAY BE COATED WITH A LIGHT FILM OF LUBRICATION USED IN THE MANUFACTURING PROCESS.
- INSERTION/WITHDRAWAL FORCES ARE INDICATED ON THE QUALITY INSPECTION PLAN.
- CARRIER STRIP TO HAVE SAME RADIUS AS CRIMP SECTION WITH SMOOTH TRANSITION BETWEEN PARTS.
- ACCEPTED NEMA STANDARD MALE: .032 X .205
- WIRE RANGE: (2) 18 AWGs.
- INSULATION DIAMETER RANGE: ϕ .075- ϕ .140.

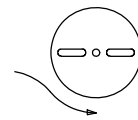


P/C	DESCRIPTION	MAT'L
07693	DF12-1-NPS	NOTE 3

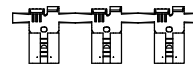
Rev.	Description of Change/ SCN#	Date
9	REDRAWN ON SOLIDWORKS SCJ ORG.ENG.DWG.DATE: 11-26-86	7-7-06
10	ECR# 1480 SCJ	6/22/12



DIRECTION EXITING TOOL,
EARS UP, TO THE FRONT



DIRECTION TOWARD APPLICATOR,
EARS UP, TO THE BACK



UNCONTROLLED COPY

 THIRD ANGLE PROJECTION	TOOL NO. 0631	Title: .205 FEMALE FLAG DISCONNECT	
	TOLERANCES UNLESS OTHERWISE SPECIFIED INCHES: XX - \pm .030 XXX - \pm .015 ANGLES: \pm 5°		DO NOT SCALE DWG. Drawn By: S.JOHNSON Chk'd/App'd By:
ETCO Incorporated Engineered Products 25 Bellows Street Warwick, RI 02888 Phone: (401) 467-2400 Fax: (401) 467-9230 www.ETCO.com		Dwg. No.: DF12-1 cust	