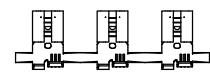
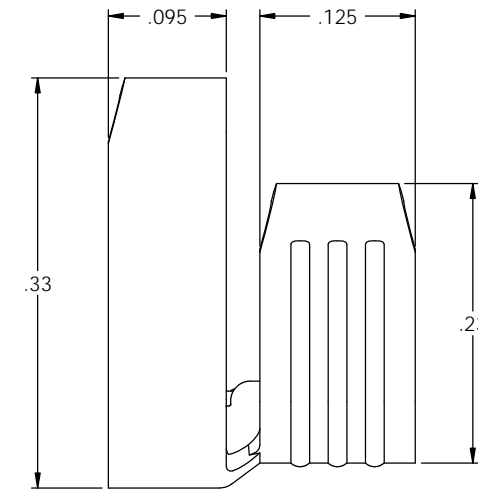
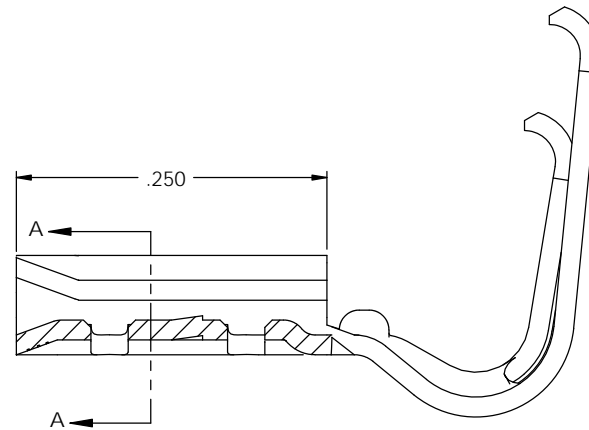
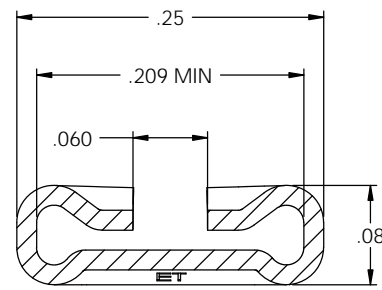
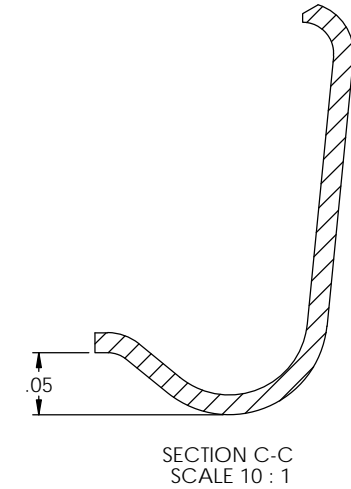
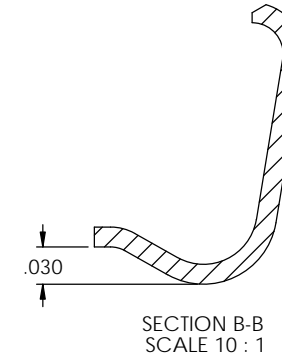
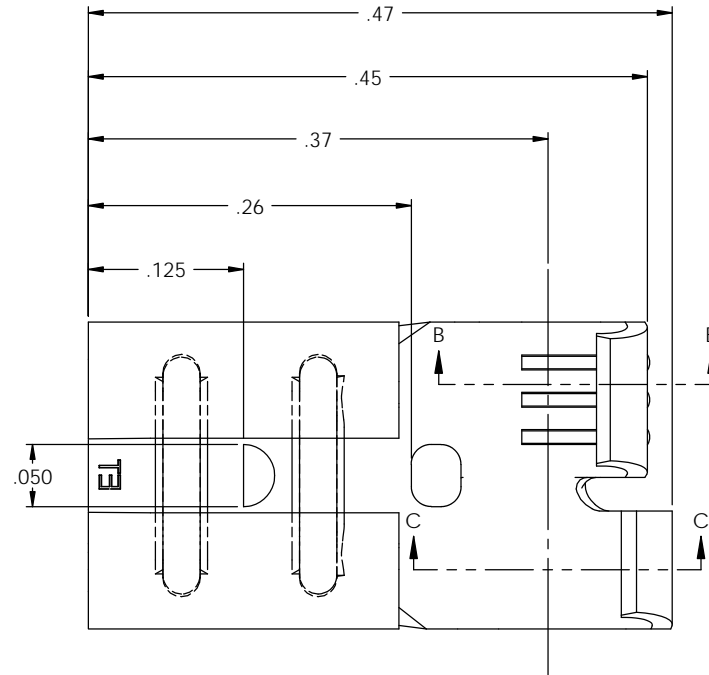
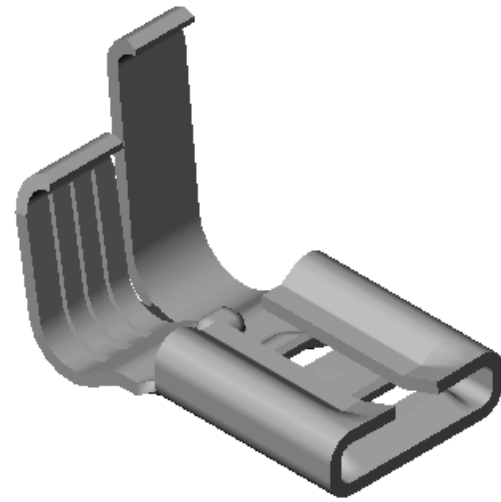


NOTES:

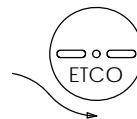
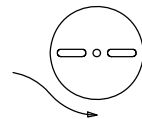
- MATERIAL: .016 THICK BRASS
#4 TEMPER (FULL HARD)
PER ETCO METAL CODE 05036.
- MATERIAL: .016 THICK PRE-TINNED BRASS
#4 TEMPER (FULL HARD)
PER ETCO METAL CODE 05236.
- MATERIAL: .016 THICK PRE-NICKEL PLATED STEEL
#2 TEMPER (1/2 HARD)
PER ETCO METAL CODE 03130.
- PARTS MAY BE COATED WITH A LIGHT FILM OF LUBRICATION USED IN THE MANUFACTURING PROCESS.
- ACCEPTED NEMA STANDARD MALE: SEE CHART.
- WIRE RANGE: 20-16 AWG.
- INSULATION DIAMETER RANGE: ϕ .075- ϕ .140.

P/C	DESCRIPTION	ACCEPTED MALE	MAT'L	CAJUS®
07689	DF12-HB	.032 X .205	NOTE 1	
07691	DF12-THB	.032 X .205	NOTE 2	
07692	DF12-NPS	.032 X .205	NOTE 3	X
07694	DF14-HB	.020 X .205	NOTE 1	
07695	DF14-THB	.020 X .205	NOTE 2	
07696	DF16-HB	.025 X .205	NOTE 1	
07697	DF16-THB	.025 X .205	NOTE 2	

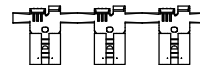
Rev.	Description of Change/ SCN#	Date
9	REDRAWN ON SOLIDWORKS ADDED P/Cs 07692 & 07696 SCJ ORG.ENG.DWG.DATE: 11-26-86	7-6-06
10	SCN# 140162 SCJ	9-4-07
11	ECR# 1480 SCJ	6/22/12
11	ECR# 3798 SCJ	7/20/15



DIRECTION EXITING TOOL,
EARS UP, TO THE FRONT



DIRECTION TOWARD APPLICATOR,
EARS UP, TO THE BACK



UNCONTROLLED COPY					
 THIRD ANGLE PROJECTION	TOOL NO. 0631	Title: .205 FEMALE FLAG DISCONNECT			
		DO NOT SCALE DWG.	Drawn By: S.JOHNSON	Date: 7-7-06	
TOLERANCES UNLESS OTHERWISE SPECIFIED INCHES: .XX - \pm .030 .XXX - \pm .015 ANGLES: \pm 5°		ETCO Incorporated Engineered Products 25 Bellows Street Warwick, RI 02888 Phone: (401) 467-2400 Fax: (401) 467-9230 www.ETCO.com	Chk'd/App'd By:	Scale: 10X	Size C
Dwg. No.: DF12, DF14, DF16 cust					