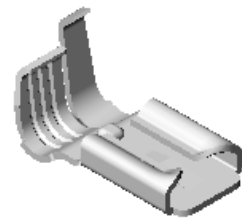


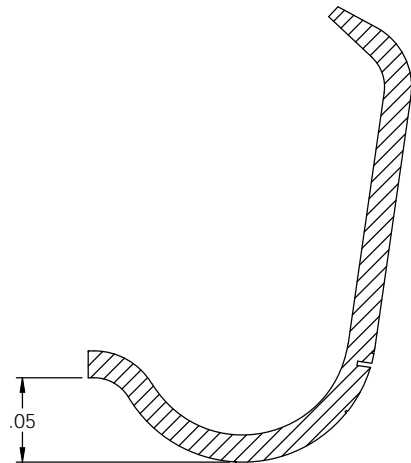
NOTES:

- MATERIAL: .016 THICK, BRASS, #4 TEMPER (FULL HARD), PER ETCO METAL CODE 05027.
- MATERIAL: .016 THICK, PRE-TINNED BRASS, #4 TEMPER (FULL HARD), PER ETCO METAL CODE 01181.
- MATERIAL: .016 THICK, NICKEL PLATED STEEL, #2 TEMPER (1/2 HARD), PER ETCO METAL CODE 03112.
- PARTS MAY BE COATED WITH A LIGHT FILM OF LUBRICATION USED IN THE MANUFACTURING PROCESS.
- INSERTION/WITHDRAWAL FORCES ARE INDICATED ON THE QUALITY INSPECTION PLAN.
- WIRE RANGE: 18-20 AWG.
- INSULATION DIAMETER RANGE:  $\phi$ .100- $\phi$ .155

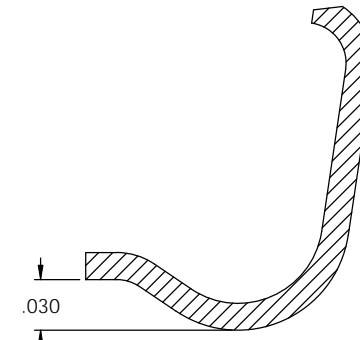
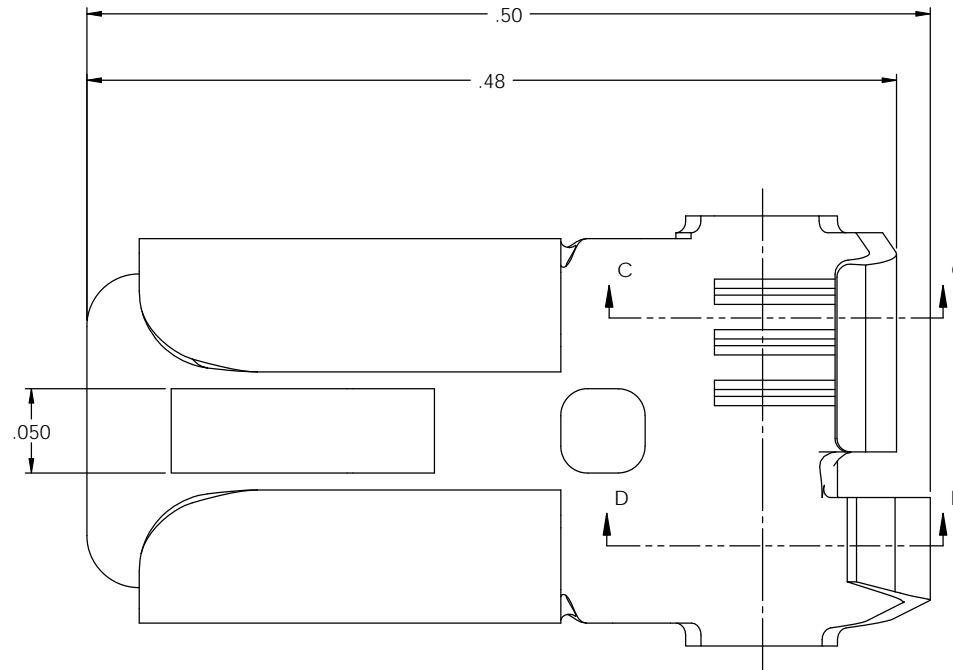


P/C	DESCRIPTION	ACCEPTED MALE	DIM 'A'	DIM 'B'	ZONE 1	MAT'L	UL	SP
07760	DF120-HB	.020 X .187	.023-.020	.073	.021	NOTE 1	X	X
07770	DF120-THB	.020 X .187	.023-.020	.073	.021	NOTE 2	X	X
07771	DF120-1-THB	.020 X .187	.023-.020	.073	.021	NOTE 2	X	X
07774	DF120-1-NPS	.020 X .187	.023-.020	.073	.021	NOTE 3		
07775	DF120-2-NPS	.016 X .187	.019-.016	.073	.017	NOTE 3		
07780	DF122-HB	.032 X .187	.035-.032	.085	.033	NOTE 1	X	X
07790	DF122-THB	.032 X .187	.035-.032	.085	.033	NOTE 2	X	X

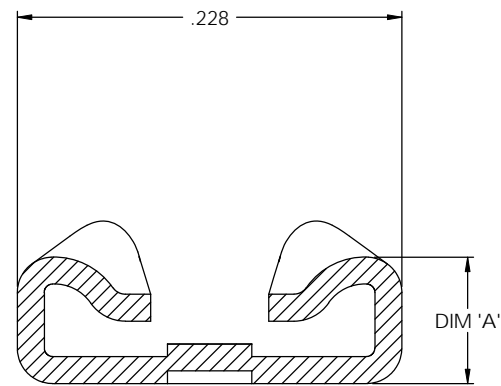
Rev.	Description of Change/ SCN#	Date
1	REDRAWN ON SOLIDWORKS NO CHANGES SCJ ORG.ENG.DWG.DATE: 5-3-62	2-14-08



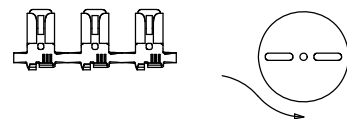
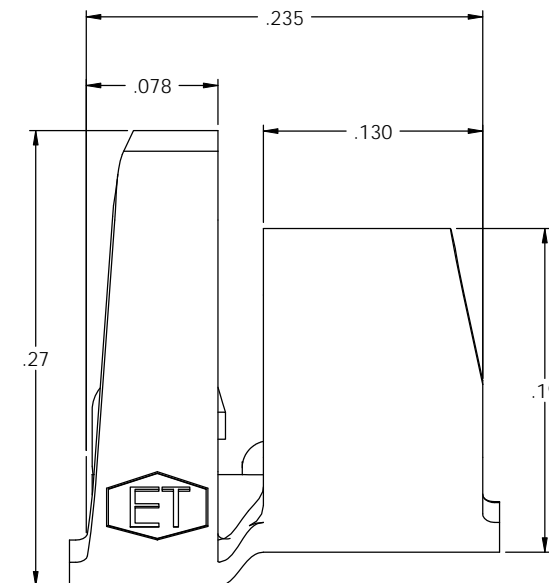
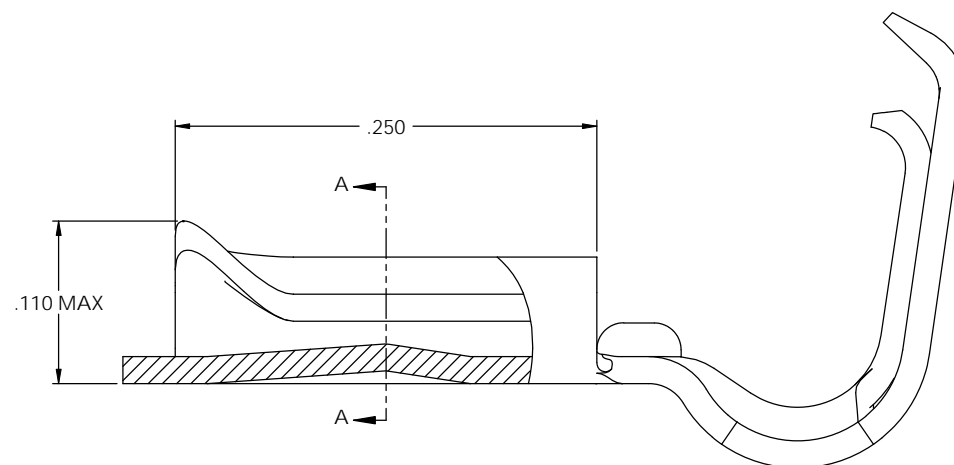
SECTION D-D  
SCALE 14 : 1



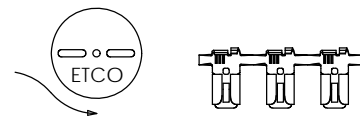
SECTION C-C  
SCALE 14 : 1



SECTION A-A  
SCALE 14 : 1



DIRECTION EXITING TOOL,  
EARS UP, TO THE FRONT



DIRECTION TOWARD APPLICATOR,  
EARS UP, TO THE BACK

**UNCONTROLLED COPY**

 THIRD ANGLE PROJECTION	TOOL NO.	Title: FEMALE FLAG DISCONNECT		
	0605	DO NOT SCALE DWG.	Drawn By: S.JOHNSON	Date: 2-14-08
TOLERANCES UNLESS OTHERWISE SPECIFIED INCHES: XX - $\pm$ .030 XXX - $\pm$ .015 ANGLES: $\pm$ 5°	 ETCO	ETCO Incorporated Engineered Products 25 Bellows Street Warwick, RI 02888 Phone: (401) 467-2400 Fax: (401) 467-9230 www.ETCO.com	Chk'd/App'd By:	Scale: 14X Size: C
		Dwg. No.: DF120, -1, -2, DF122 cust		