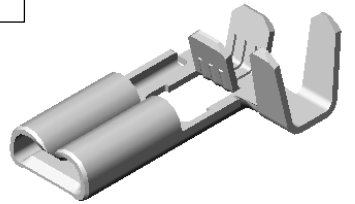
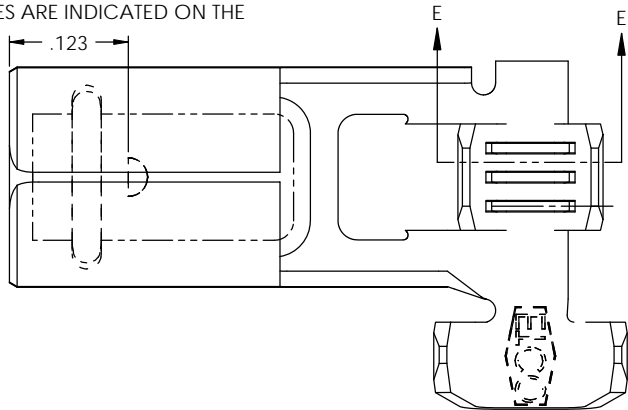



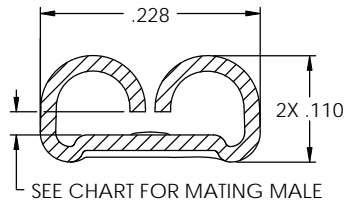
NOTES:

1. MATERIAL: .016 THICK BRASS
#4 TEMPER (FULL HARD)
PER ETCO METAL CODE 00168.
2. MATERIAL: .016 THICK PRETINNED BRASS
#4 TEMPER (FULL HARD)
PER ETCO METAL CODE 01243.
4. INSERTION/WITHDRAWAL FORCES ARE INDICATED ON THE QUALITY INSPECTION PLAN.
5. WIRE RANGE: 18-14 AWG.
6. INSUL RANGE: \varnothing .125-.155.

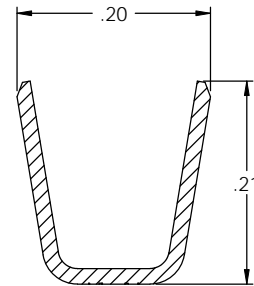
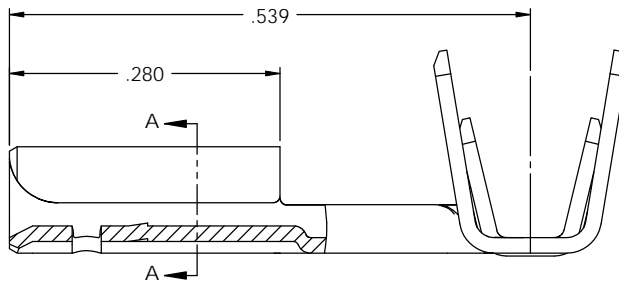


P/C	DESCRIPTION	MALE TAB	MAT'L	
07785	DF124N-HB	.032 X .187	NOTE 1	X
07799	DF124N-THB	.032 X .187	NOTE 2	X
07813	DF126N-HB	.020 X .187	NOTE 1	X
07814	DF126N-THB	.020 X .187	NOTE 2	X

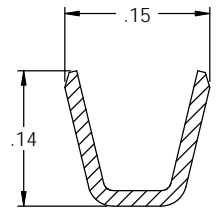
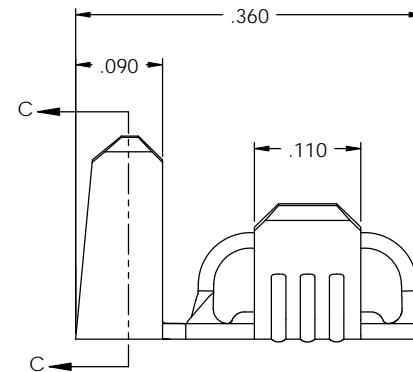
Rev	Description of Change/ SCN#	Date
1	SCN# 140112 SCJ	2-27-07



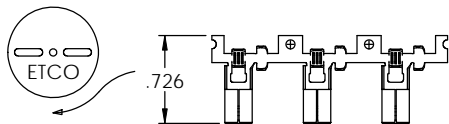
SECTION A-A
SCALE 8 : 1



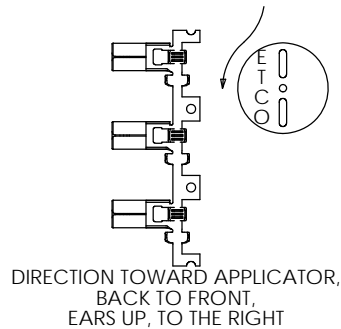
SECTION C-C
SCALE 8 : 1





SECTION E-E
SCALE 8 : 1



DIRECTION EXITING TOOL,
RIGHT TO LEFT,
EARS UP, TO THE BACK



UNCONTROLLED COPY

 THIRD ANGLE PROJECTION TOLERANCES UNLESS OTHERWISE SPECIFIED INCHES: .XX - \pm .030 .XXX - \pm .015 ANGLES: \pm 5°	TOOL NO. 0795	Title: .187 FEMALE FLAG DISCONNECT	
	DO NOT SCALE DWG.	Drawn By: S. JOHNSON	Date: 2-27-07
	ETCO Incorporated Engineered Products 25 Bellows Street Warwick, RI 02888 Phone: (401) 467-2400 Fax: (401) 467-9230 www.ETCO.com	Chk'd/App'd By:	Scale: 8X Size: B
		Dwg. No.: DF124N, DF126N cust	