
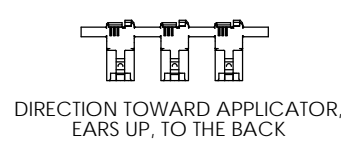
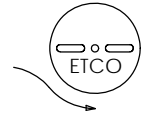
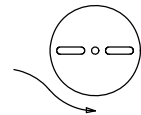
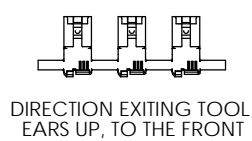
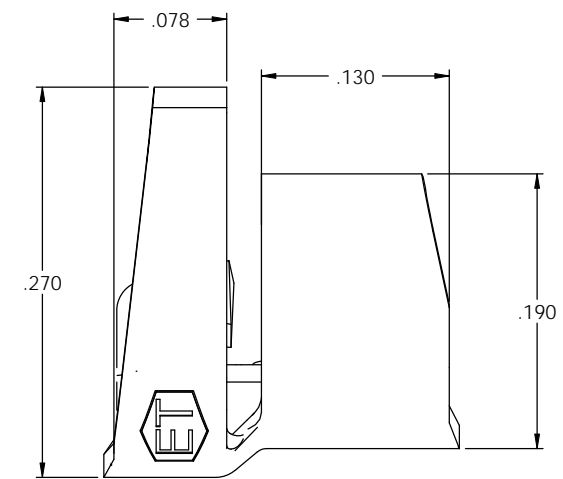
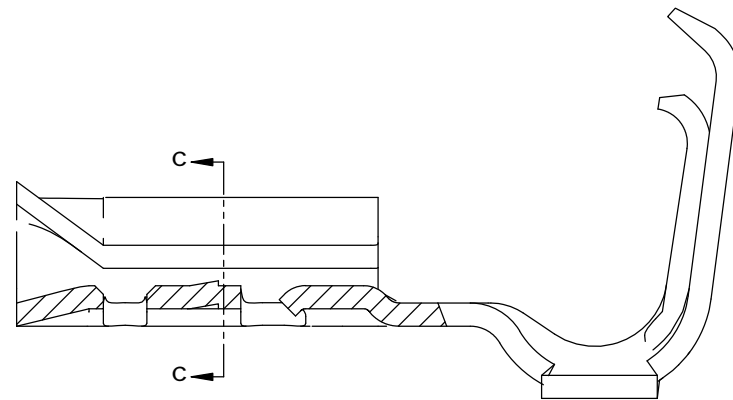
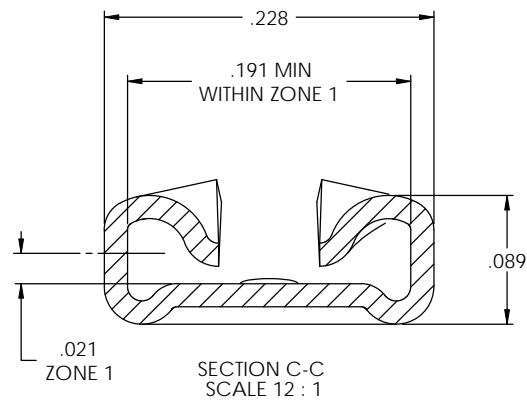
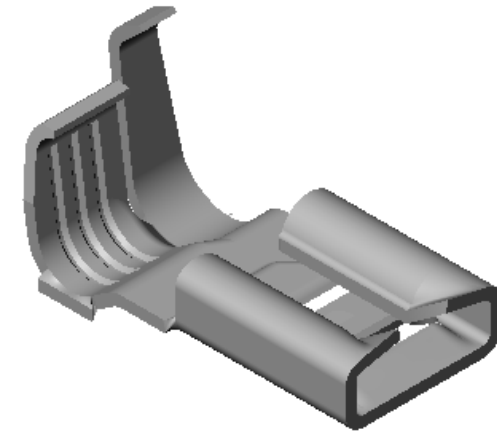
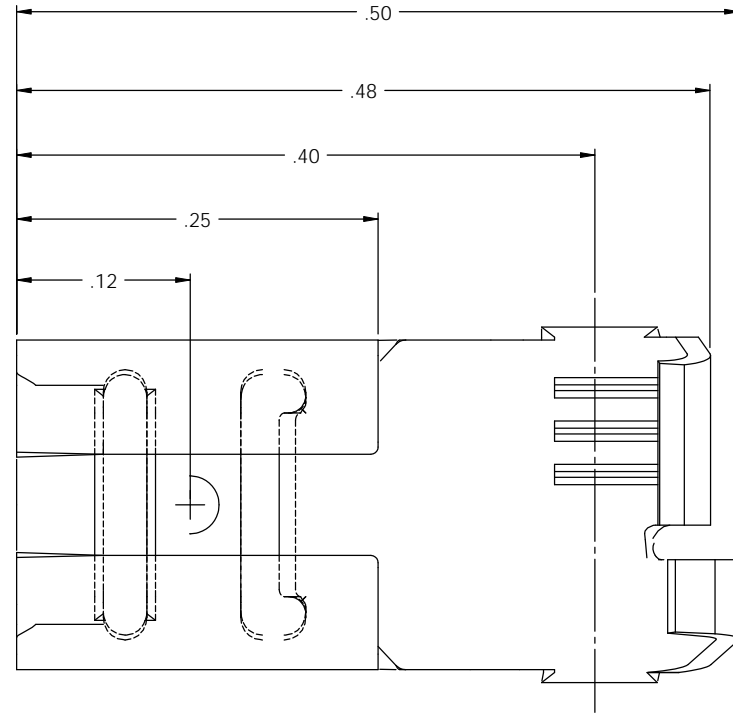
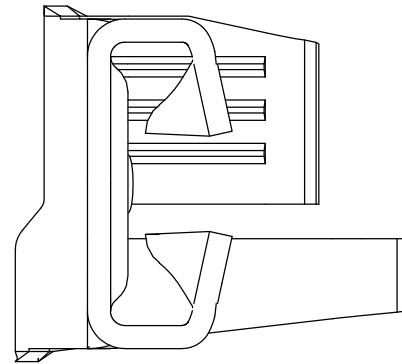




- NOTE:
 1.) MAT'L: .016 THK., BRASS,
 #4 TEMPER (FULL HARD),
 PER ETCO METAL CODE NO. 05027.
 2.) MAT'L: .016 THK., PRE-TINNED BRASS,
 #4 TEMPER (FULL HARD),
 PER ETCO METAL CODE NO. 01181.
 3.) MAT'L: .016 THK., NICKEL PLATED STEEL,
 #2 TEMPER (HALF HARD),
 PER ETCO METAL CODE NO. 03112.
 5.) PARTS MAY BE COATED WITH A LIGHT
 FILM OF LUBRICATION USED IN THE
 MANUFACTURING PROCESS.
 6.) MATING PART: .020 X .187 MALE TAB.
 7.) WIRE RANGE: 20-18 AWG.
 8.) INSULATION RANGE: Ø .100-.155.

P/C	DESCRIPTION	MAT'L	
07791	DF125-HB	NOTE 1	X
07792	DF125-THB	NOTE 2	X
07793	DF125-NPS	NOTE 3	

Rev.	Description of Change/ SCN#	Date
1	REDRAWN ON SOLIDWORKS NO CHANGES SCJ ORG.ENG.DWG.DATE: 10-7-92	10-4-05



UNCONTROLLED COPY

 THIRD ANGLE PROJECTION	TOOL NO. 0603	Title: .020 X .187 FEMALE DISCONNECT	
	TOLERANCES UNLESS OTHERWISE SPECIFIED INCHES: XX - ±.030 XXX - ±.015 ANGLES: ±5°	DO NOT SCALE DWG.	Drawn By: S. Johnson
 ETCO Incorporated Engineered Products 25 Bellows Street Warwick, RI 02888 Phone: (401) 467-2400 Fax: (401) 467-9230 www.ETCO.com		Chk'd/App'd By:	Scale: 12X Size: C
Dwg. No.: DF125 cust			