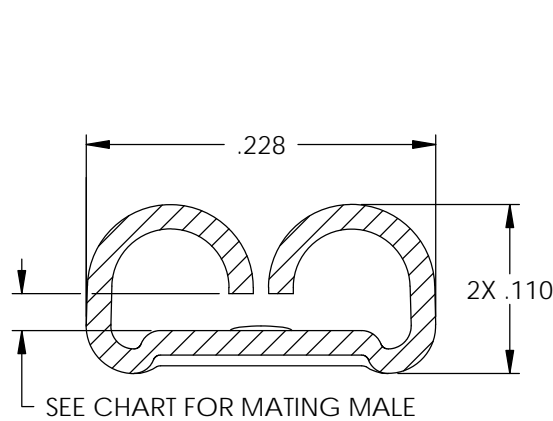
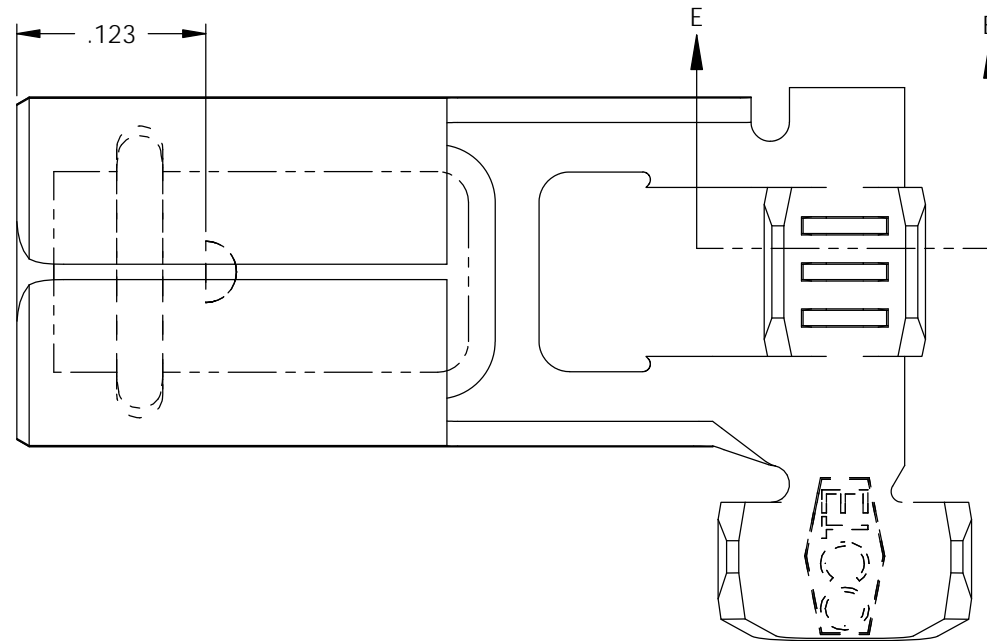
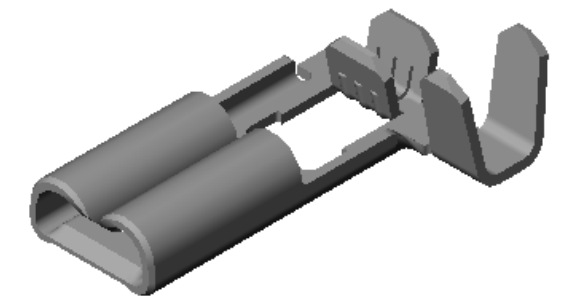


NOTES:

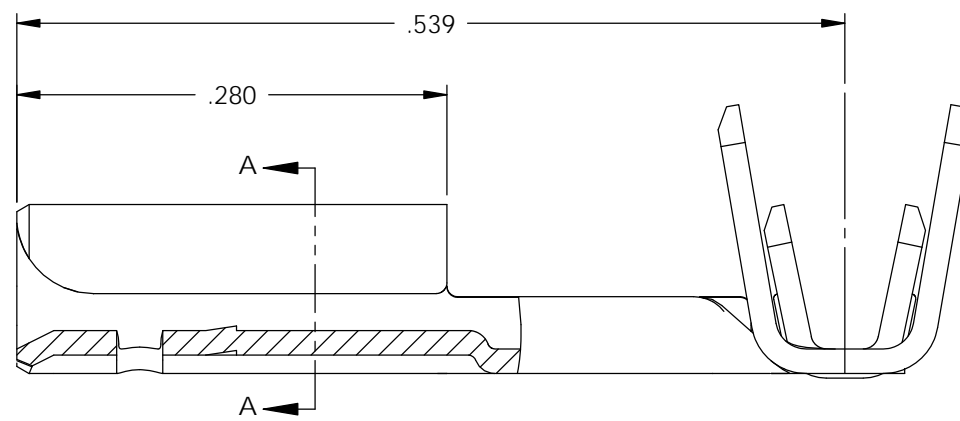
- MATERIAL: .016 THICK BRASS
#4 TEMPER (FULL HARD)
PER ETCO METAL CODE 00168.
- MATERIAL: .016 THICK PRETINNED BRASS
#4 TEMPER (FULL HARD)
PER ETCO METAL CODE 01243.
- ALL CORNERS SHOWN SHARP MAY HAVE A .010 MAX RAD.
- INSERTION/WITHDRAWAL FORCES ARE INDICATED ON THE QUALITY INSPECTION PLAN.
- WIRE RANGE: 22-18 AWG.
- INSUL RANGE: \varnothing .055-.105.

P/C	DESCRIPTION	MALE TAB	MAT'L	CAIUS [®]
07783	DF125N-HB	.032 X .187	NOTE 1	X
07784	DF125N-THB	.032 X .187	NOTE 2	X
07837	DF127N-HB	.020 X .187	NOTE 1	X
07838	DF127N-THB	.020 X .187	NOTE 2	X

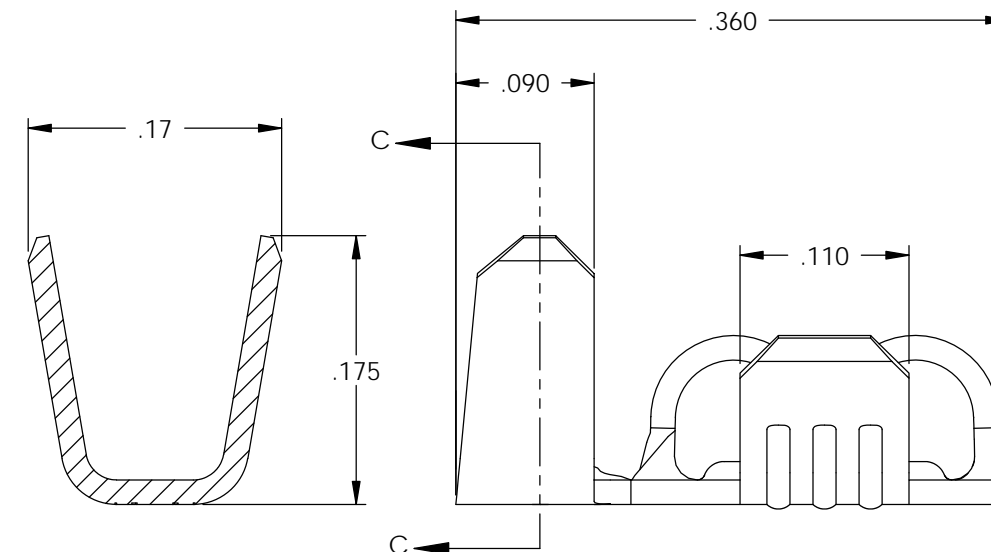
Rev.	Description of Change/ SCN#	Date
1	SCN# 140112 SCJ	2-14-07
1	ECR# 3799 SCJ	7/20/15



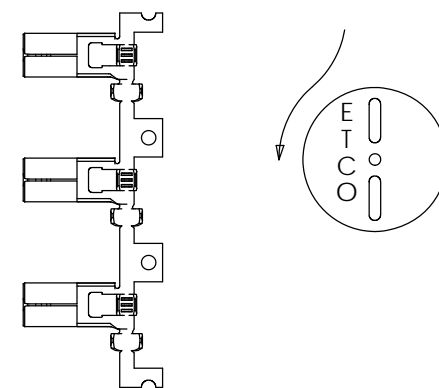
SECTION A-A
SCALE 8:1



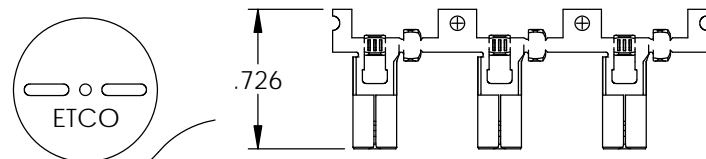
SECTION C-C
SCALE 8:1



SECTION E-E
SCALE 8:1



DIRECTION TOWARD APPLICATOR,
BACK TO FRONT,
EARS UP, TO THE RIGHT



DIRECTION EXITING TOOL,
RIGHT TO LEFT,
EARS UP, TO THE BACK

UNCONTROLLED COPY

<p>THIRD ANGLE PROJECTION TOLERANCES UNLESS OTHERWISE SPECIFIED INCHES: .XX - \pm.030 .XXX - \pm.015 ANGLES: \pm5°</p>	<p>TOOL NO. 0795</p>	<p>Title: .187 FEMALE FLAG DISCONNECT</p>		
		<p>DO NOT SCALE DWG.</p>	<p>Drawn By: S.JOHNSON</p>	<p>Date: 1-23-07</p>
<p>ETCO Incorporated Engineered Products 25 Bellows Street Warwick, RI 02888 Phone: (401) 467-2400 Fax: (401) 467-9230 www.ETCO.com</p>		<p>Chk'd/App'd By:</p>	<p>Scale: 8X</p>	<p>Size B</p>
		<p>Dwg. No.: DF125N, DF127N cust</p>		