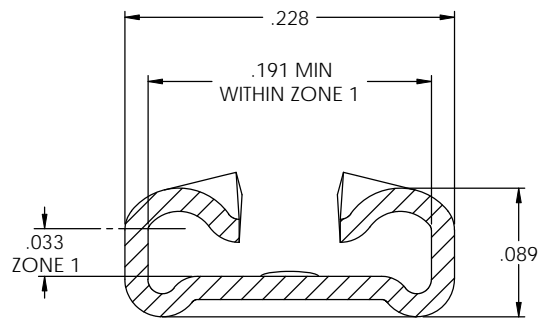
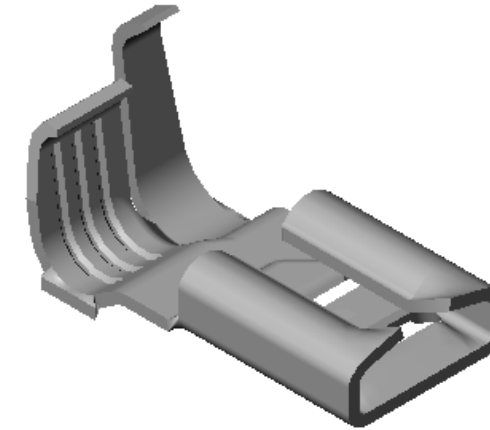
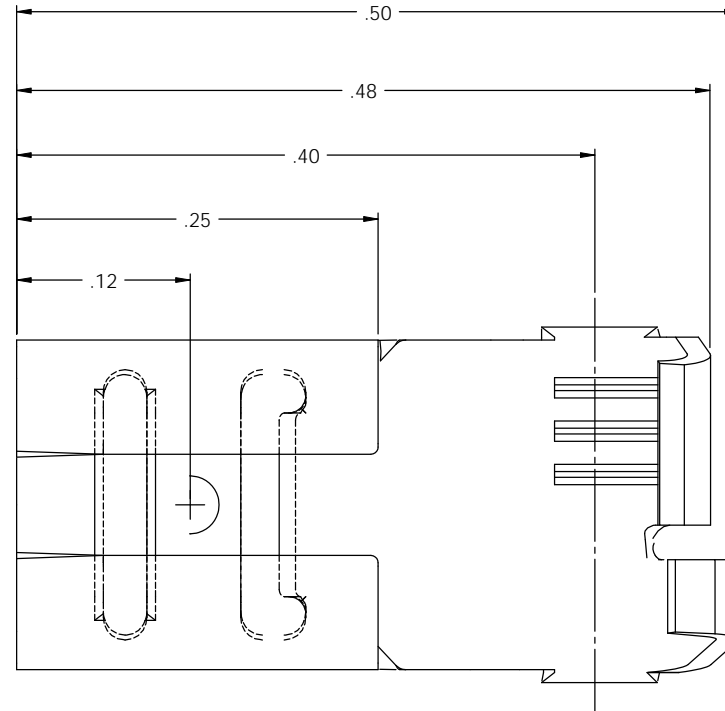
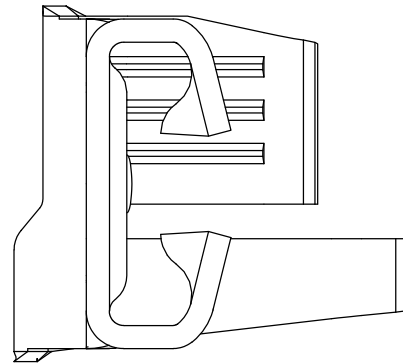


NOTE:

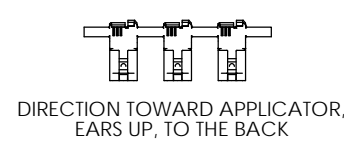
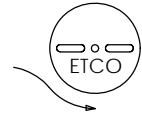
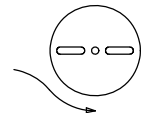
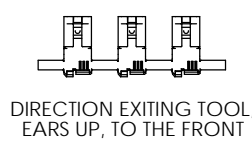
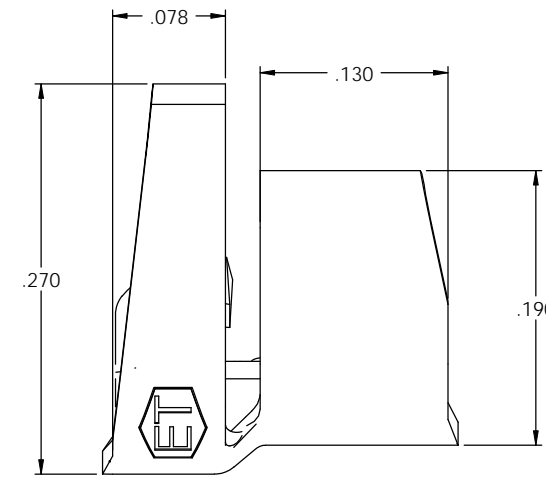
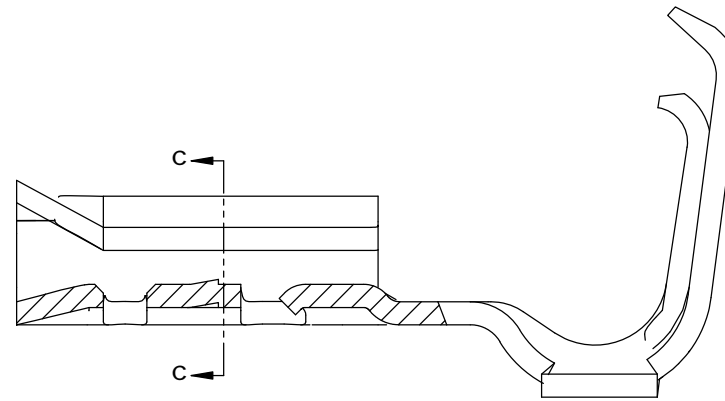
- 1.) MAT'L: .016 THK., BRASS, #4 TEMPER (FULL HARD), PER ETCO METAL CODE NO. 05027.
- 2.) MAT'L: .016 THK., PRE-TINNED BRASS, #4 TEMPER (FULL HARD), PER ETCO METAL CODE NO. 01181.
- 3.) MAT'L: .016 THK., NICKEL PLATED STEEL, #2 TEMPER (HALF HARD), PER ETCO METAL CODE NO. 03112.
- 4.) MAT'L: .016 THK., COPPER ALLOY C19025, #4 TEMPER (FULL HARD), PER ETCO METAL CODE NO. 03766.
- 5.) PARTS MAY BE COATED WITH A LIGHT FILM OF LUBRICATION USED IN THE MANUFACTURING PROCESS.
- 6.) MATING PART: .032 X .187 MALE TAB.
- 7.) WIRE RANGE: 20-18 AWG.
- 8.) INSULATION RANGE: Ø .100-.155.

P/C	DESCRIPTION	MAT'L
07786	DF127-C19025	NOTE 4
07787	DF127-NPS	NOTE 3
07788	DF127-HB	NOTE 1
07789	DF127-THB	NOTE 2

Rev.	Description of Change/ SCN#	Date
1	REDRAWN ON SOLIDWORKS NO CHANGES SCJ ORG.ENG.DWG.DATE: 10-7-92	10-4-05
2	REMOVED DIM A FROM CHART/ SCN# 140162 SCJ	8-27-07



SECTION C-C
SCALE 12 : 1



UNCONTROLLED COPY

 THIRD ANGLE PROJECTION	TOOL NO. 0603	Title: .032 X .187 FEMALE DISCONNECT	
	TOLERANCES UNLESS OTHERWISE SPECIFIED INCHES: XX - ±.030 XXX - ±.015 ANGLES: ±5°	ETCO Incorporated Engineered Products 25 Bellows Street Warwick, RI 02888 Phone: (401) 467-2400 Fax: (401) 467-9230 www.ETCO.com	DO NOT SCALE DWG. Drawn By: S. Johnson Chk'd/App'd By:
		Dwg. No.: DF127 cust	