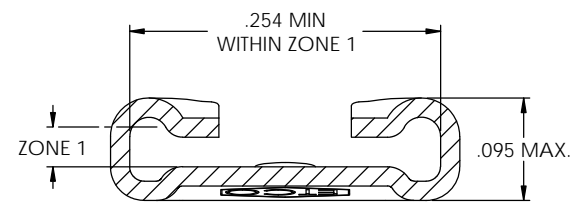
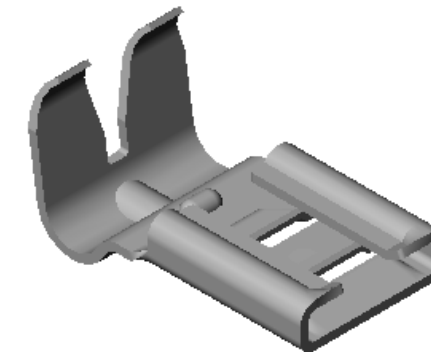
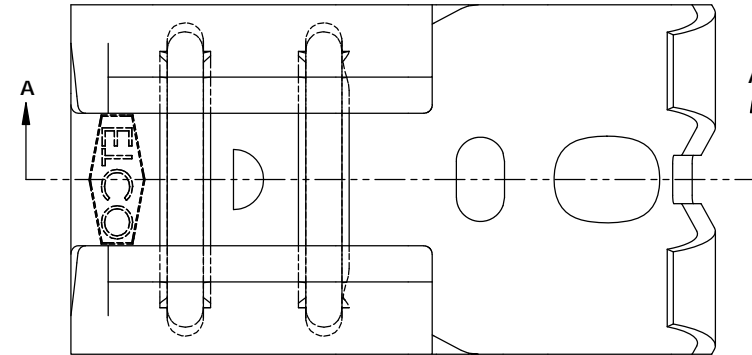


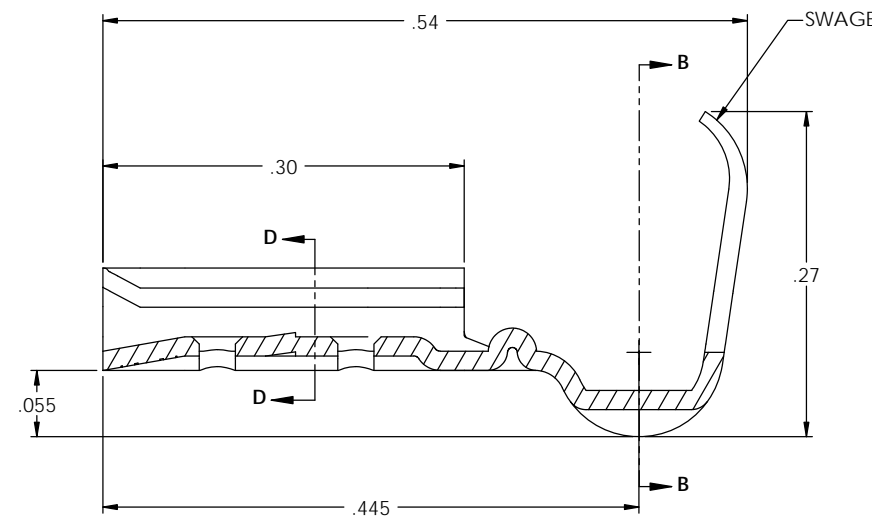
- NOTE:
- MAT'L: .016 THK., BRASS, #4 TEMPER (FULL HARD), PER ETCO METAL CODE NO. 00131.
 - MAT'L: .016 THK., PRE-TINNED BRASS, #4 TEMPER (FULL HARD), PER ETCO METAL CODE NO. 01195.
 - MAT'L: .016 THK., PRE-NICKEL PLATED STEEL, #2 TEMPER (HALF HARD), PER ETCO METAL CODE NO. 03115.
 - INSERTION/WITHDRAWAL FORCES ARE LOCATED ON THE QUALITY INSPECTION RECORD.
 - WIRE RANGE: 18-14 AWG.

P/C	DESCRIPTION	ACCEPTED MALE	REWIND	MAT'L	UL	SP
07800	DF210L-HB	.032 X .250	NO	NOTE 1	X	X
07810	DF210L-THB	.032 X .250	NO	NOTE 2	X	X
07811	DF210-R-HB	.032 X .250	YES	NOTE 1	X	X
07812	DF210-R-THB	.032 X .250	YES	NOTE 2	X	X
07815	DF210L-NPS	.032 X .250	NO	NOTE 3		
07816	DF210L-1-NPS	.028 X .250	NO	NOTE 3		
07817	DF210-1-R-NPS	.028 X .250	YES	NOTE 3		

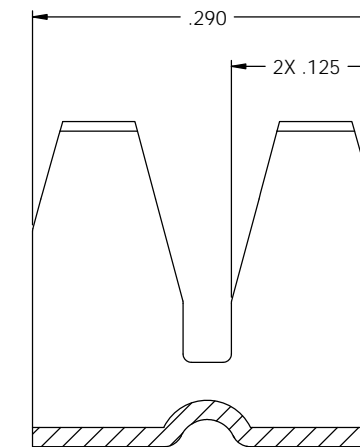
Rev.	Description of Change/ SCN#	Date
1	REDRAWN ON SOLIDWORKS NO CHANGES SCJ ORG.ENG.DWG.DATE: 2-28-91	3-7-06
2	SCN# 140273 SCJ	10-24-07
3	ECR# 1157 SCJ	2/23/12



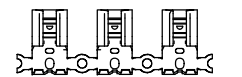
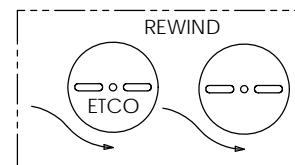
SECTION D-D
SCALE 10 : 1



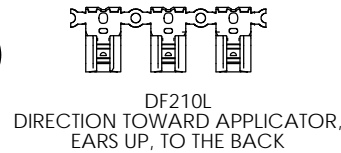
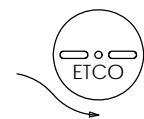
SECTION A-A
SCALE 10 : 1



SECTION B-B
SCALE 10 : 1



DIRECTION EXITING TOOL,
EARS UP, TO THE FRONT



UNCONTROLLED COPY

THIRD ANGLE PROJECTION	TOOL NO.	Title: .250 FEMALE DISCONNECT		
	0127	DO NOT SCALE DWG.	Drawn By: S.JOHNSON	Date: 3-7-06
TOLERANCES UNLESS OTHERWISE SPECIFIED	ETCO	ETCO Incorporated Engineered Products 25 Bellows Street Warwick, RI 02888 Phone: (401) 467-2400 Fax: (401) 467-9230 www.ETCO.com	Chk'd/App'd By:	Scale: 4X
INCHES: XX - ±.030 XXX - ±.015 ANGLES: ±5°			Dwg. No.: DF210 cust	Size: C