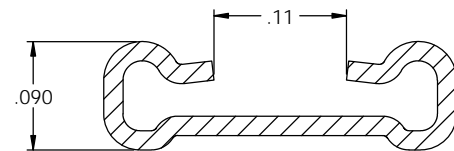


NOTES:

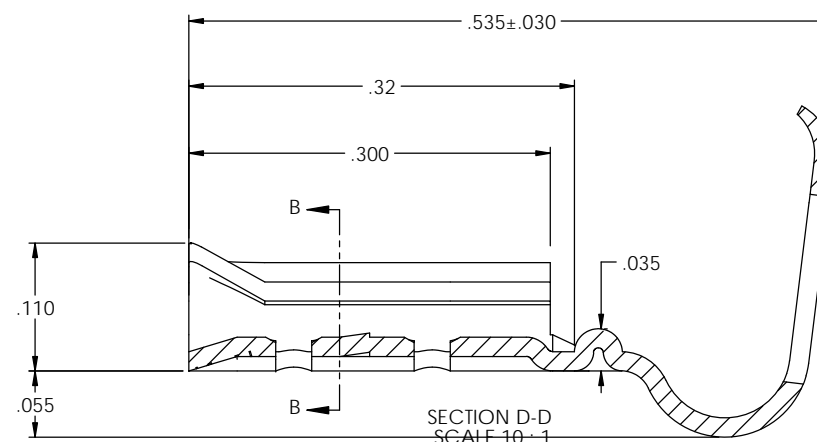
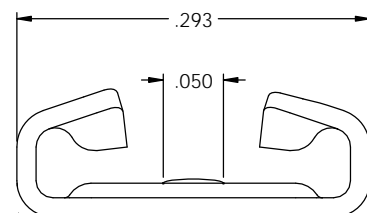
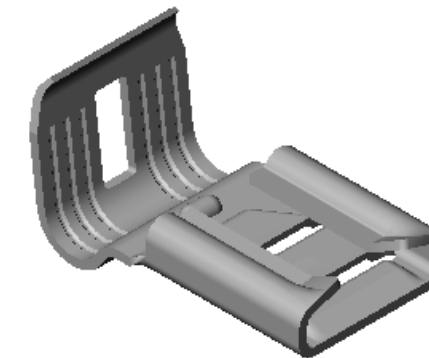
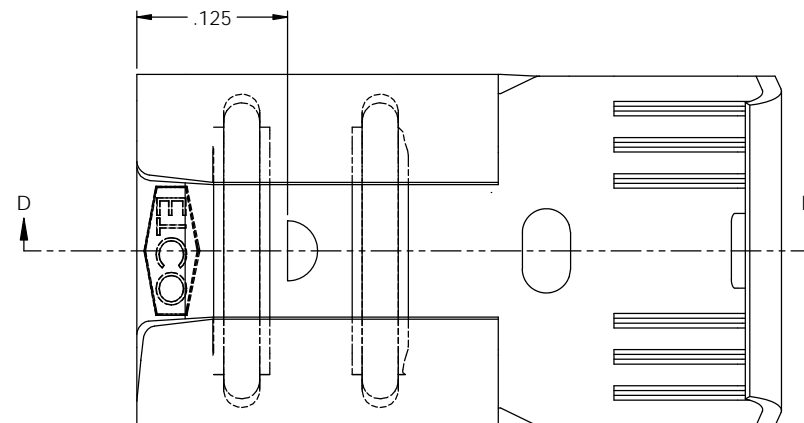
- MATERIAL: .016 THICK BRASS
#4 TEMPER (FULL HARD)
PER ETCO METAL CODE 00169.
- MATERIAL: .016 THICK PRETINNED BRASS
#4 TEMPER (FULL HARD)
PER ETCO METAL CODE 01241.
- MATERIAL: .016 THICK NICKEL PLATED STEEL
#2 TEMPER (1/2 HARD)
PER ETCO METAL CODE 03132.
- TO ACCEPT .032 X .250 NEMA STANDARD MALE.
- WIRE RANGE: 14-18 AWG.

P/C	DESCRIPTION	REWIND	MAT'L	UL	SP
07807	DF211L-N-HB	NO	NOTE 1	X	X
07808	DF211L-N-THB	NO	NOTE 2	X	X
07809	DF211L-N-NPS	NO	NOTE 3		
07832	DF211R-N-HB	YES	NOTE 1	X	X
07833	DF211R-N-THB	YES	NOTE 2	X	X
07834	DF211R-N-NPS	YES	NOTE 3		

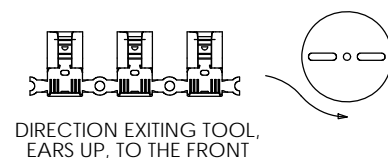
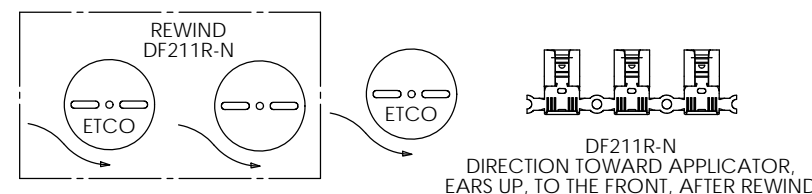
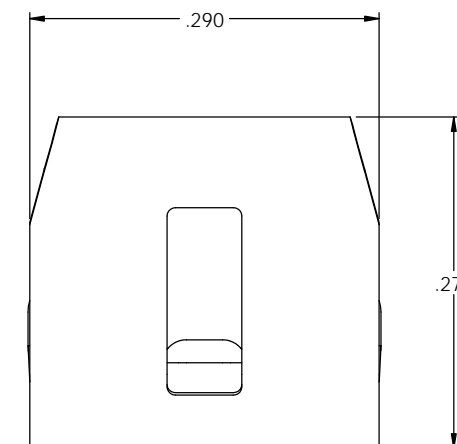
Rev.	Description of Change/ SCN#	Date
1	SCN# 140254 SCJ REDRAWN ON SOLIDWORKS NO CHANGES SCJ	10-23-07 9-29-11



SECTION B-B
SCALE 10 : 1



SECTION D-D
SCALE 10 : 1



UNCONTROLLED COPY

<p>THIRD ANGLE PROJECTION</p>	TOOL NO.	Title: .032 X .250 FEMALE DISCONNECT	
	0678	DO NOT SCALE DWG.	Date: 9-29-11
<p>ETCO</p>	Chk'd/App'd By:	S. JOHNSON	Scale: 10X
	Dwg. No.:	DF211L-N, DF211R-N cust	