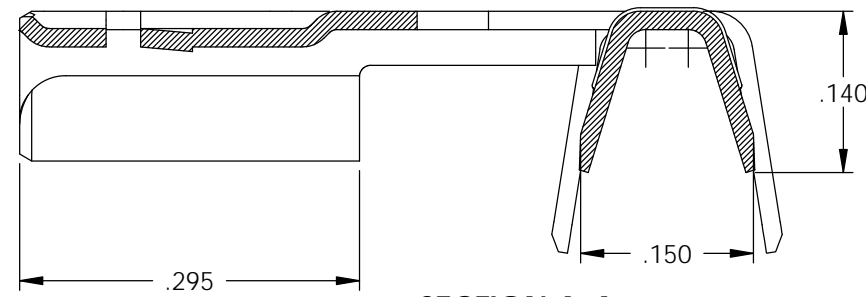
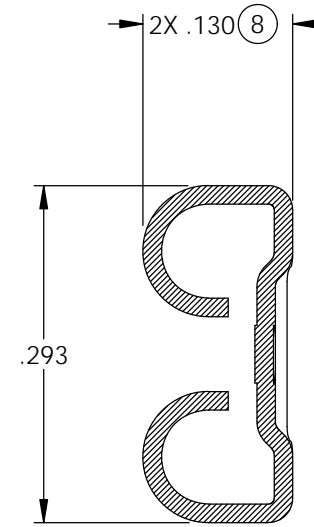
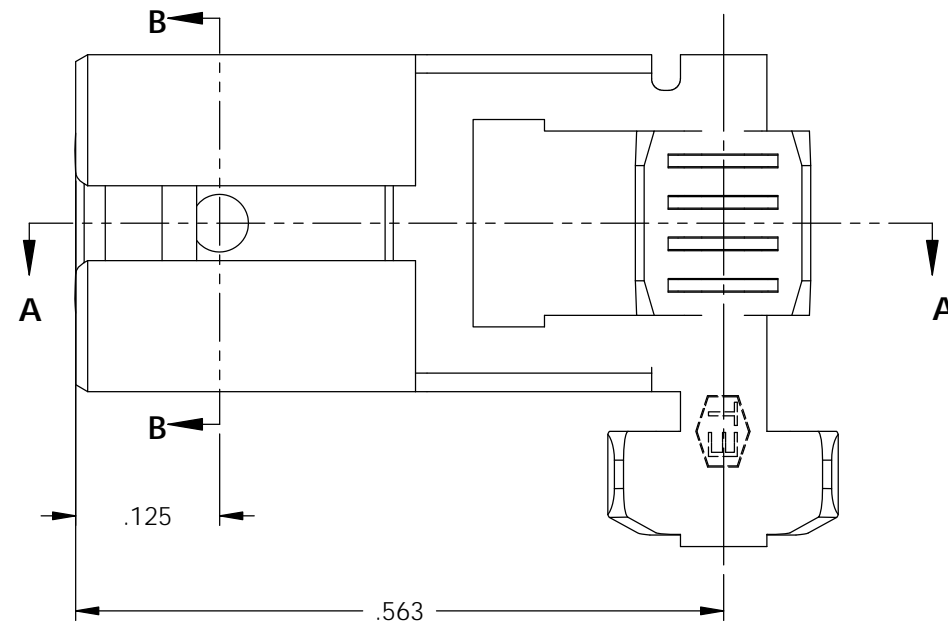
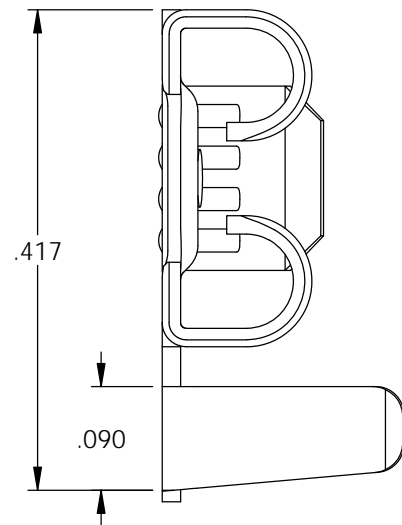


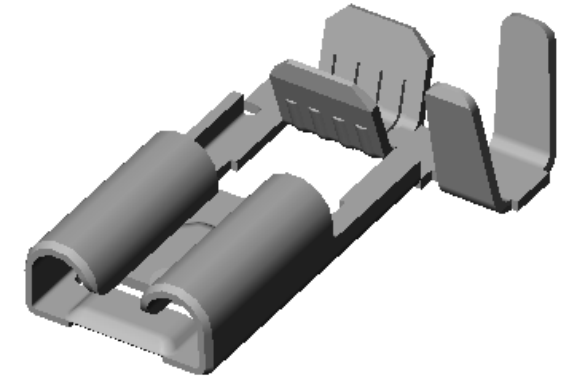
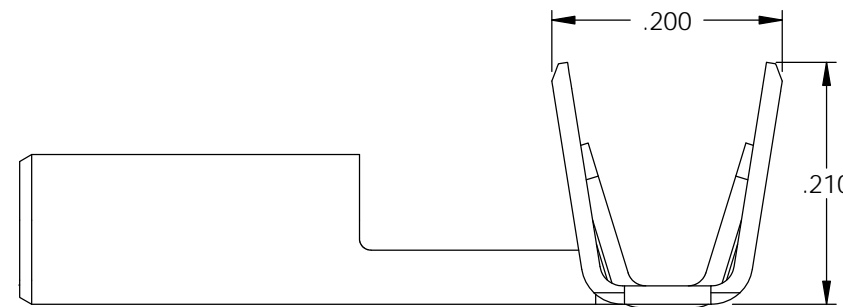
- NOTES:
1. MATERIAL: .016 THICK BRASS, #4 TEMPER PER ETCO METAL CODE 00168.
 2. MATERIAL: .016 THICK PRE-TINNED BRASS, #4 TEMPER PER ETCO METAL CODE 01243.
 3. MATERIAL: .016 THICK PRE-HOT AIR LEVEL TINNED BRASS, #4 TEMPER PER ETCO METAL CODE 01244.
 4. MATERIAL: .016 THICK, COPPER ALLOY C18080, #4 TEMPER, PER ETCO METAL CODE 00258. (4)
 5. ACCEPTS MALE TAB: .250 X .032.
 6. WIRE RANGE: 18-14 AWG
 7. INSULATION RANGE: \varnothing .125-.155



SECTION A-A
SCALE 6 : 1

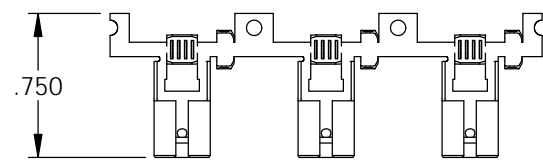
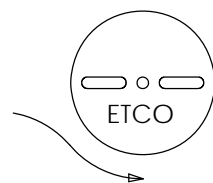


SECTION B-B
SCALE 6 : 1



P/C	DESCRIPTION	MAT'L	UL	UL
07881	DF224-HB	NOTE 1	X	X
07882	DF224-THB	NOTE 2	X	X
07845	DF224-HN-THB	NOTE 2		
07893	DF224-THB-DW03G	NOTE 3	X	X
36022	DF224-HC	NOTE 4		

Rev.	Description of Change/ SCN#	Date
1	REDRAWN ON SOLIDWORKS, ISSUED P/C's 07966, 07967, 07968, 07969 SCJ ORG.ENG.DWG.DATE: 11-30-01	12-17-04
2	SCN# 103002 SCJ	6-29-05
3	ISSUED P/C 36022 SCJ	11-29-05
4	SCN# 140106 SCJ	1-25-07
5	SCN# 140255 SCJ	10-24-07
6	ECR# 1231 SCJ	3-16-12
7	ECR# 1663 SCJ	9/19/12
8	ECR# 4197 SCJ	5/02/16
9	ECR# 4378 SCJ	9/19/16
9	Added p/c 07893 SCJ	2/20/19



DIRECTION TOWARD APPLICATOR
EARS UP, TO THE BACK

UNCONTROLLED COPY

<p>THIRD ANGLE PROJECTION TOLERANCES UNLESS OTHERWISE SPECIFIED INCHES: .XX - \pm.030 .XXX - \pm.015 ANGLES: \pm5°</p>	TOOL NO. 0973 (9)	Title: 1/4" IN-LINE DISCONNECT	
		DO NOT SCALE DWG.	Drawn By: C.O'REILLY Date: 6-4-01 Chk'd/App'd By: Scale: 6X Size: B Dwg. No.: DF224 cust
ETCO Incorporated Engineered Products 25 Bellows Street Warwick, RI 02888 Phone: (401) 467-2400 Fax: (401) 467-9230 www.ETCO.com			