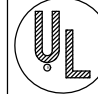

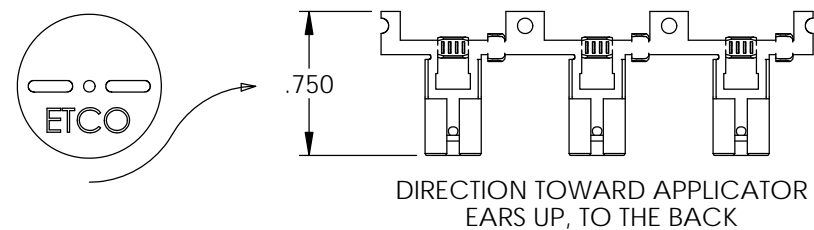
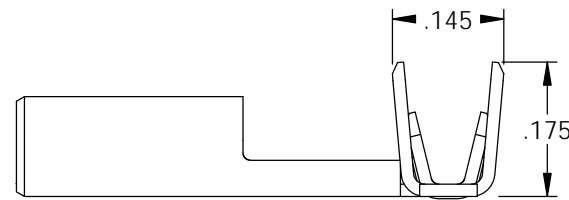
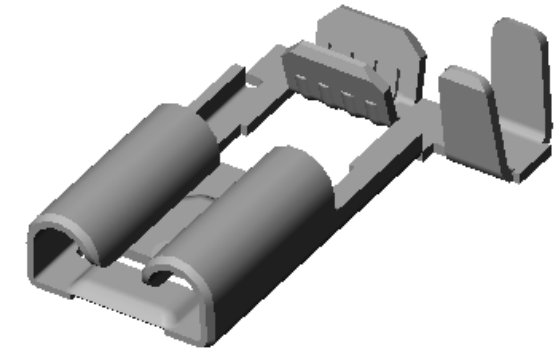
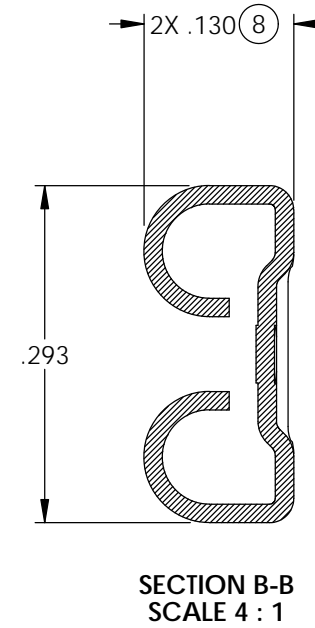
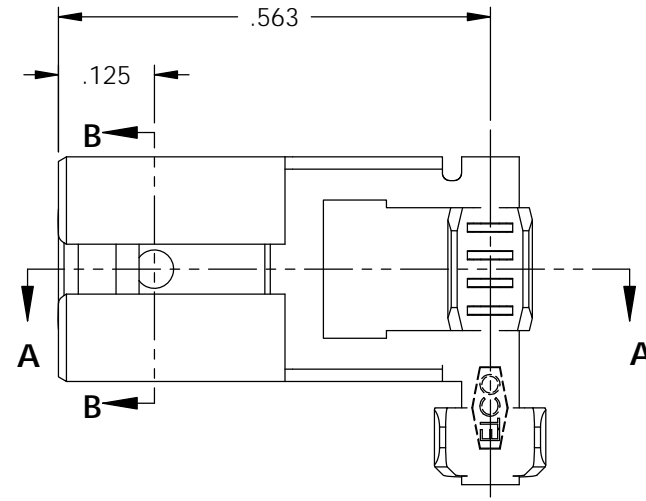
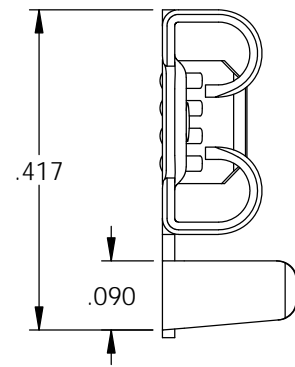
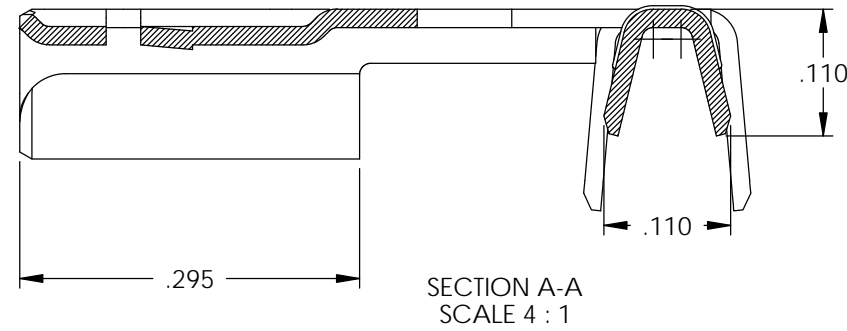


- NOTES:
1. MATERIAL: .016 THICK BRASS,  
#4 TEMPER  
PER ETCO METAL CODE 00168.
  2. MATERIAL: .016 THICK PRE-TINNED BRASS,  
#4 TEMPER  
PER ETCO METAL CODE 01243.
  3. ACCEPTS MALE TAB: .250 X .032.
  4. WIRE RANGE: 22-18 AWG
  5. INSULATION RANGE:  $\varnothing$ .055-.105



P/C	DESCRIPTION	MAT'L		
07846	DF225-HB	NOTE 1	X	
07847	DF225-THB	NOTE 2	X	

Rev.	Description of Change/ SCN#	Date
1	REDRAWN ON SOLIDWORKS, ISSUED P/C's 07966, 07967, 07968, 07969 SCJ ORG.ENG.DWG.DATE: 11-30-01	12-17-04
2	SCN# 103002 SCJ	6-29-05
3	ISSUED P/C 36022 SCJ	11-29-05
4	SCN# 140106 SCJ	1-25-07
5	SCN# 140255 SCJ	10-24-07
6	ECR# 1231 SCJ	3-16-12
7	ECR# 1663 SCJ	9/19/12
8	ECR# 4197 SCJ	5/02/16
8	ECR# 4378 SCJ	9/19/16



THIS PRINT IS THE PROPERTY OF ETCO INCORPORATED. NO PART OF THIS DESIGN MAY BE USED IN ANY WAY WITHOUT WRITTEN CONSENT FROM ETCO INCORPORATED.

## UNCONTROLLED COPY

 THIRD ANGLE PROJECTION TOLERANCES UNLESS OTHERWISE SPECIFIED INCHES: .XX - $\pm$ .030 .XXX - $\pm$ .015 ANGLES: $\pm$ 5°	TOOL NO. <b>0599</b>	Title: <b>1/4" IN-LINE DISCONNECT</b>	
		DO NOT SCALE DWG. Drawn By: S.JOHNSON Date: 9/19/16	Chk'd/App'd By: Scale: 4X Size B
		Dwg. No.: <b>DF225 cust</b>	

ETCO Incorporated  
 Engineered Products  
 25 Bellows Street  
 Warwick, RI 02888  
 Phone: (401) 467-2400  
 Fax: (401) 467-9230  
 www.ETCO.com