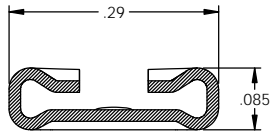
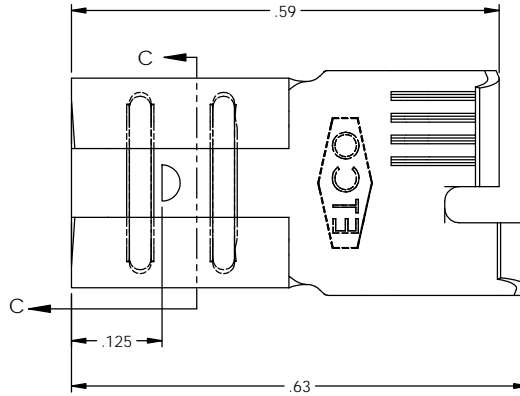


NOTES:

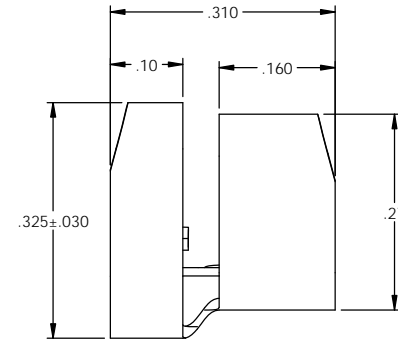
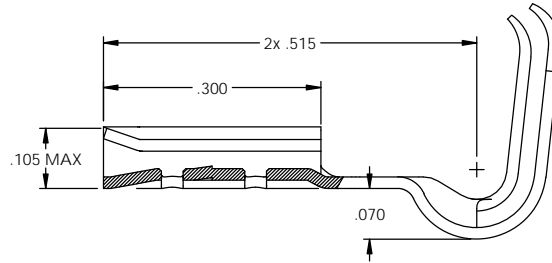
- MATERIAL: .016 THICK BRASS
#4 TEMPER (FULL HARD)
PER ETCO METAL CODE 05039.
- MATERIAL: .016 THICK PRE-TINNED BRASS
#4 TEMPER (FULL HARD)
PER ETCO METAL CODE 05272.
- MATERIAL: .016 THICK NICKEL PLATED STEEL
#2 TEMPER (1/2 HARD)
PER ETCO METAL CODE 03138.
- PARTS MAY BE COATED WITH A LIGHT FILM OF LUBRICATION USED IN THE MANUFACTURING PROCESS.
- INSERTION/WITHDRAWAL FORCES ARE INDICATED ON THE QUALITY INSPECTION PLAN.
- TO ACCEPT: .032 X .250 NEMA STANDARD MALE.
- WIRE RANGE: 14-18 AWG.
- INSULATION DIAMETER RANGE: ϕ .100- ϕ .155.

PART CODE	DESCRIPTION	MAT'L	UL
07861	DF240L-HB	NOTE 1	X
07862	DF240L-THB	NOTE 2	X
07843	DF240L-NPS	NOTE 3	

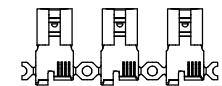
Rev	Description of Change/ SCN#	Date
2	REDRAWN IN SOLIDWORKS ORIG. ENG. DWG DATE 11/4/1988 SCJ	5/21/12



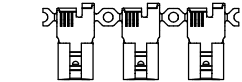
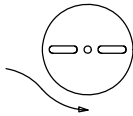
SECTION C-C
SCALE 6 : 1



UNCONTROLLED COPY



DIRECTION EXITING TOOL,
EARS UP, TO THE FRONT



DIRECTION TOWARD APPLICATOR,
EARS UP, TO THE BACK

THIRD ANGLE PROJECTION
TOLERANCES UNLESS OTHERWISE SPECIFIED
INCHES: .XX - \pm .030
.XXX - \pm .015
ANGLES: \pm 5°

TOOL NO.
0601



Title: .032 x .250 FEMALE DISCONNECT

DO NOT SCALE DWG.

Drawn By: S. JOHNSON

Date: 5/22/12

Chk'd/App'd By:

Scale:
10X

Size
B

Dwg. No.:

DF240L cust

ETCO Incorporated
Engineered Products
25 Bellows Street
Warwick, RI 02888
Phone: (401) 467-2400
Fax: (401) 467-9230
www.ETCO.com