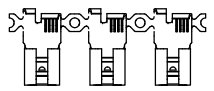
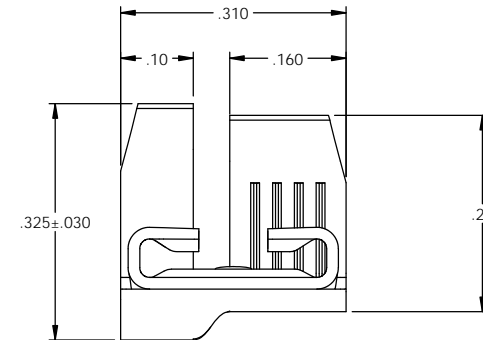
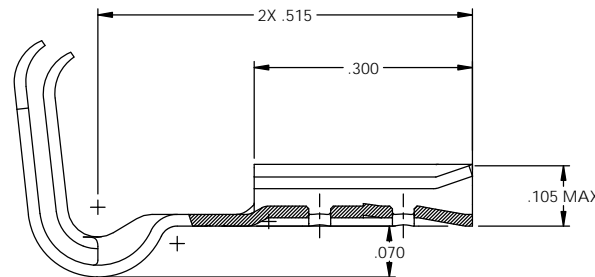
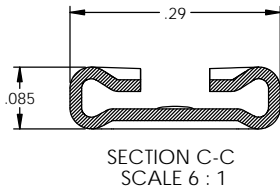
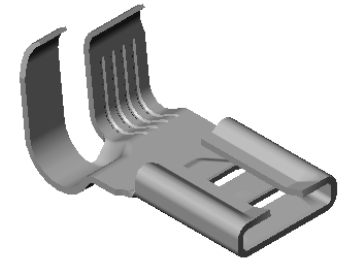
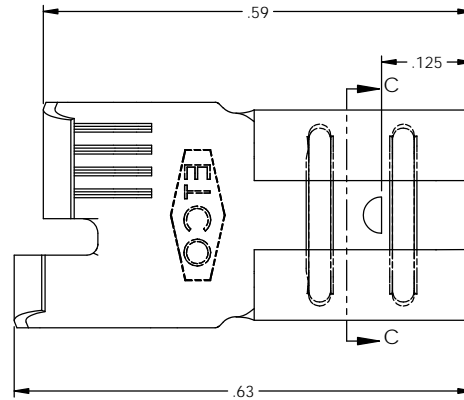


NOTES:

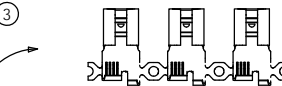
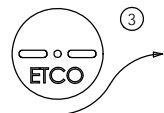
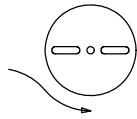
1. MATERIAL: .016 THICK BRASS  
#4 TEMPER (FULL HARD)  
PER ETCO METAL CODE 05039.
2. MATERIAL: .016 THICK PRE-TINNED BRASS  
#4 TEMPER (FULL HARD)  
PER ETCO METAL CODE 05272.
3. MATERIAL: .016 THICK NICKEL PLATED STEEL  
#2 TEMPER (1/2 HARD)  
PER ETCO METAL CODE 03138.
4. PARTS MAY BE COATED WITH A LIGHT FILM OF LUBRICATION USED IN THE MANUFACTURING PROCESS.
5. INSERTION/WITHDRAWAL FORCES ARE INDICATED ON THE QUALITY INSPECTION PLAN.
6. TO ACCEPT: .032 X .250 NEMA STANDARD MALE.
6. WIRE RANGE: 14-18 AWG.
7. INSULATION DIAMETER RANGE:  $\phi$ .100- $\phi$ .155.

PART CODE	DESCRIPTION	MAT'L	UL
07863	DF240R-HB	NOTE 1	X
07864	DF240R-THB	NOTE 2	X
07859	DF240R-NPS	NOTE 3	

Rev.	Description of Change/ SCN#	Date
2	REDRAWN IN SOLIDWORKS ORIG. ENG. DWG DATE 11/4/1988 SCJ	5/21/12
3	ECR# 2146 SCJ	4/22/13



DIRECTION EXITING TOOL,  
EARS UP, TO THE BACK



DIRECTION TOWARD APPLICATOR,  
EARS UP, TO THE FRONT

THIS PRINT IS THE PROPERTY OF ETCO INCORPORATED. NO PART OF THIS DESIGN MAY BE USED IN ANY WAY WITHOUT WRITTEN CONSENT FROM ETCO INCORPORATED.

## UNCONTROLLED COPY

<p>THIRD ANGLE PROJECTION TOLERANCES UNLESS OTHERWISE SPECIFIED INCHES: XX - <math>\pm</math> .030 XXX - <math>\pm</math> .015 ANGLES: <math>\pm</math> 5°</p>	TOOL NO. <b>0600</b>	Title: .032 x .250 FEMALE DISCONNECT	
	DO NOT SCALE DWG.	Drawn By: S. JOHNSON	Date: 5/21/12
<p>ETCO Incorporated Engineered Products 25 Bellows Street Warwick, RI 02888 Phone: (401) 467-2400 Fax: (401) 467-9230 www.ETCO.com</p>	Chk'd/App'd By:	Scale: 10X	Size: B
	Dwg. No.:	DF240R cust	