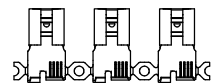
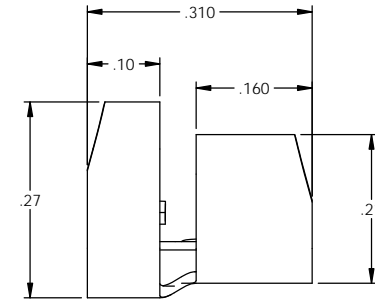
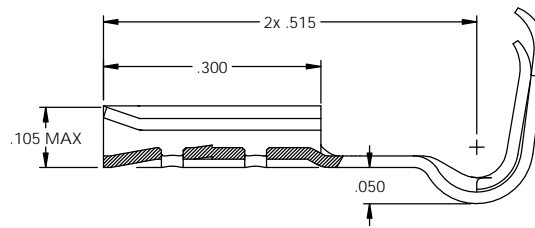
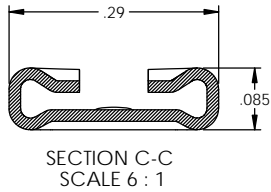
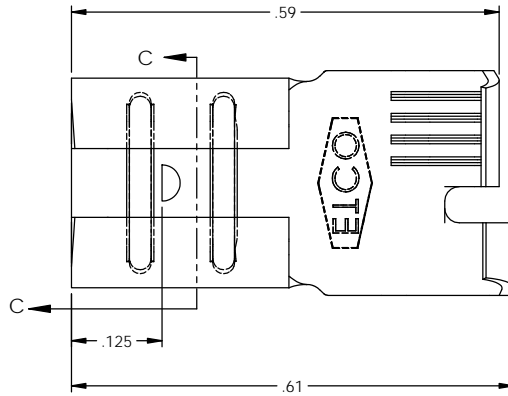


NOTES:

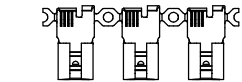
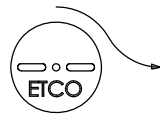
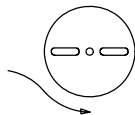
1. MATERIAL: .016 THICK BRASS  
#4 TEMPER (FULL HARD)  
PER ETCO METAL CODE 05038.
2. MATERIAL: .016 THICK PRE-TINNED BRASS  
#4 TEMPER (FULL HARD)  
PER ETCO METAL CODE 05269.
3. MATERIAL: .016 THICK NICKEL PLATED STEEL  
#2 TEMPER (1/2 HARD)  
PER ETCO METAL CODE 03136.
4. PARTS MAY BE COATED WITH A LIGHT FILM OF LUBRICATION USED IN THE MANUFACTURING PROCESS.
5. INSERTION/WITHDRAWAL FORCES ARE INDICATED ON THE QUALITY INSPECTION PLAN.
6. TO ACCEPT: .032 X .250 NEMA STANDARD MALE.
6. WIRE RANGE: 16-20 AWG.
7. INSULATION DIAMETER RANGE:  $\phi$ .080- $\phi$ .125.

PART CODE	DESCRIPTION	MAT'L	
07865	DF241L-HB	NOTE 1	X
07866	DF241L-THB	NOTE 2	X
07842	DF241L-NPS	NOTE 3	

Rev	Description of Change/ SCN#	Date
2	REDRAWN IN SOLIDWORKS ORIG. ENG. DWG DATE 11/4/1988 SCJ	5/21/12





DIRECTION EXITING TOOL,  
EARS UP, TO THE FRONT



DIRECTION TOWARD APPLICATOR,  
EARS UP, TO THE BACK

THIS PRINT IS THE PROPERTY OF ETCO INCORPORATED. NO PART OF THIS DESIGN MAY BE USED IN ANY WAY WITHOUT WRITTEN CONSENT FROM ETCO INCORPORATED.

## UNCONTROLLED COPY

 THIRD ANGLE PROJECTION TOLERANCES UNLESS OTHERWISE SPECIFIED INCHES: .XX - $\pm$ .030 .XXX - $\pm$ .015 ANGLES: $\pm$ 5°	TOOL NO. <b>0601</b>	Title: .032 x .250 FEMALE DISCONNECT	
	DO NOT SCALE DWG.	Drawn By: S. JOHNSON	Date: 5/22/12
	ETCO Incorporated Engineered Products 25 Bellows Street Warwick, RI 02888 Phone: (401) 467-2400 Fax: (401) 467-9230 www.ETCO.com	Chk'd/App'd By:	Scale: 10X Size: B
		Dwg. No.:	<b>DF241L cust</b>