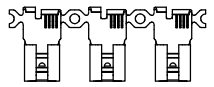
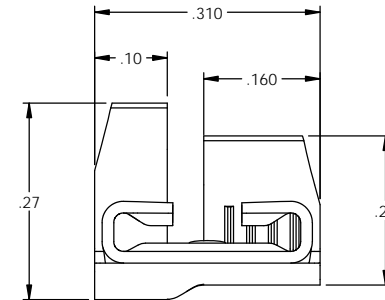
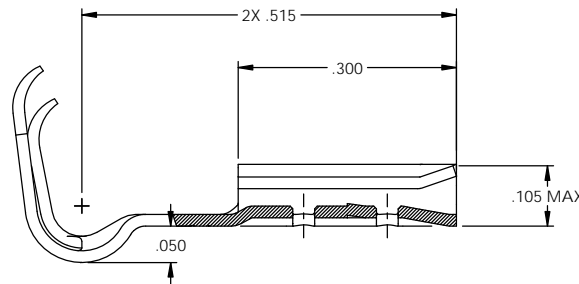
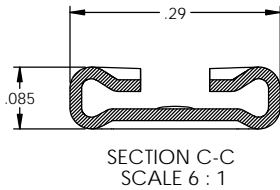
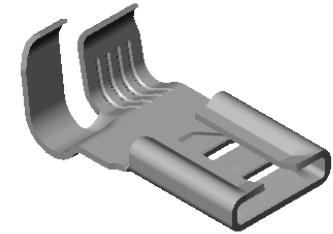
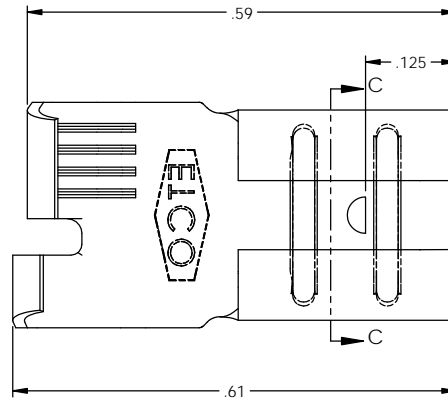


NOTES:

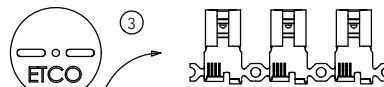
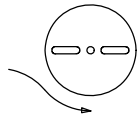
1. MATERIAL: .016 THICK BRASS
#4 TEMPER (FULL HARD)
PER ETCO METAL CODE 05039.
2. MATERIAL: .016 THICK PRE-TINNED BRASS
#4 TEMPER (FULL HARD)
PER ETCO METAL CODE 05272.
3. MATERIAL: .016 THICK NICKEL PLATED STEEL
#2 TEMPER (1/2 HARD)
PER ETCO METAL CODE 03138.
4. PARTS MAY BE COATED WITH A LIGHT FILM OF LUBRICATION USED IN THE MANUFACTURING PROCESS.
5. INSERTION/WITHDRAWAL FORCES ARE INDICATED ON THE QUALITY INSPECTION PLAN.
6. TO ACCEPT: .032 X .250 NEMA STANDARD MALE.
6. WIRE RANGE: 14-18 AWG.
7. INSULATION DIAMETER RANGE: ϕ .100- ϕ .155.

PART CODE	DESCRIPTION	MAT'L	UL
07867	DF241R-HB	NOTE 1	X
07868	DF241R-THB	NOTE 2	X
07841	DF241R-NPS	NOTE 3	

Rev.	Description of Change/ SCN#	Date
2	REDRAWN IN SOLIDWORKS ORIG. ENG. DWG DATE 11/4/1988 SCJ	5/21/12
3	ECR# 2146 SCJ	4/22/13



DIRECTION EXITING TOOL,
EARS UP, TO THE BACK



DIRECTION TOWARD APPLICATOR,
EARS UP, TO THE FRONT

UNCONTROLLED COPY

THIRD ANGLE PROJECTION
TOLERANCES UNLESS OTHERWISE SPECIFIED
INCHES: XX - \pm .030
.XXX - \pm .015
ANGLES: \pm 5°

TOOL NO.
0600

Title: .032 x .250 FEMALE DISCONNECT

DO NOT SCALE DWG.

Drawn By: S. JOHNSON

Date: 5/21/12



ETCO Incorporated
Engineered Products
25 Bellows Street
Warwick, RI 02888
Phone: (401) 467-2400
Fax: (401) 467-9230
www.ETCO.com

Chk'd/App'd By:

Scale:
10X

Size
B

Dwg. No.:

DF241R cust