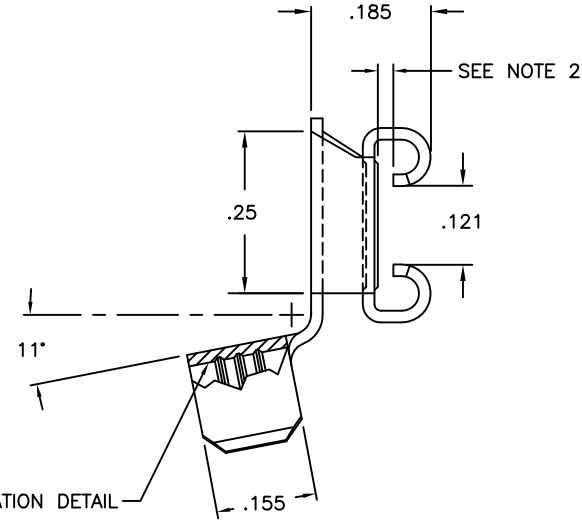
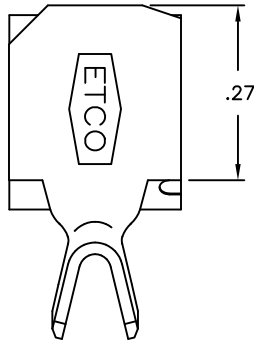


NOTE:

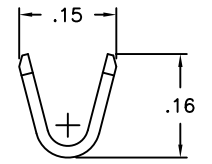
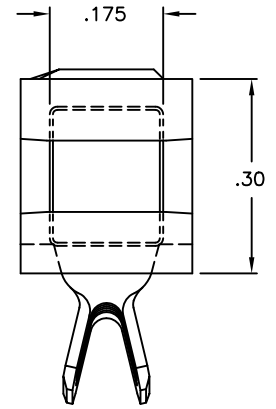
- 1.) MAT'L: .018 THK., BRASS, #2 TEMPER (HALF HARD), PER ETCO METAL CODE NO. 00248.
- 2.) MAT'L: .018 THK., PRE-TINNED BRASS, #2 TEMPER (HALF HARD), PER ETCO METAL CODE NO. 01293.
- 3.) ACCEPTS .032x.250 NEMA STD. MALE.
- 4.) WIRE RANGE: 14-16 AWG



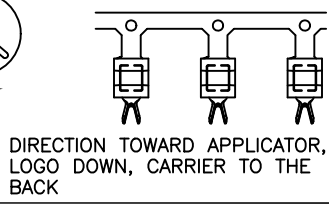
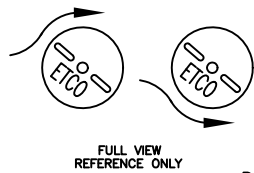
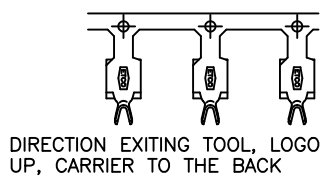
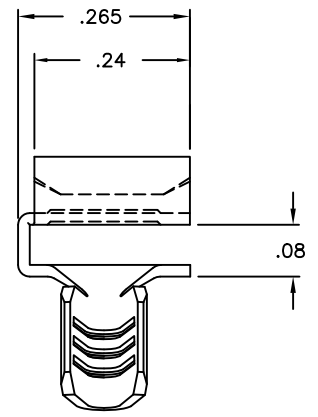
P/C	DESCRIPTION	MAT'L	UL
07857	DF311-HB	NOTE 1	X
07871	DF311-THB	NOTE 2	X



Rev.	Description of Change/ SCN#	Date
1	ACTIVATED P/C 07871 SCJ	6-6-02
2	SCN# 140276 SCJ	10/24/07



EAR DETAIL



UNCONTROLLED COPY

<p>THIRD ANGLE PROJECTION</p>	<p>TOOL NO. 0264</p>	<p>Title: FLAG DISCONNECT</p>	
	<p>TOLERANCES UNLESS OTHERWISE SPECIFIED .XX - ±.030 .XXX - ±.015 Angles - ±5°</p>	<p>DO NOT SCALE DWG.</p>	<p>Drawn By: S.JOHNSON Checked: _____ Dwg. No.: DF311</p>
		<p>ETCO Incorporated Engineered Products Division 25 Bellows Street Warwick, R.I. 02888 Phone: (401)467-2400 FAX: (401)467-9230</p>	

THIS PRINT IS THE PROPERTY OF ETCO INCORPORATED. NO PART OF THIS DESIGN MAY BE USED IN ANY WAY WITHOUT WRITTEN CONSENT FROM ETCO INCORPORATED.

CUSTOMER DRAWING