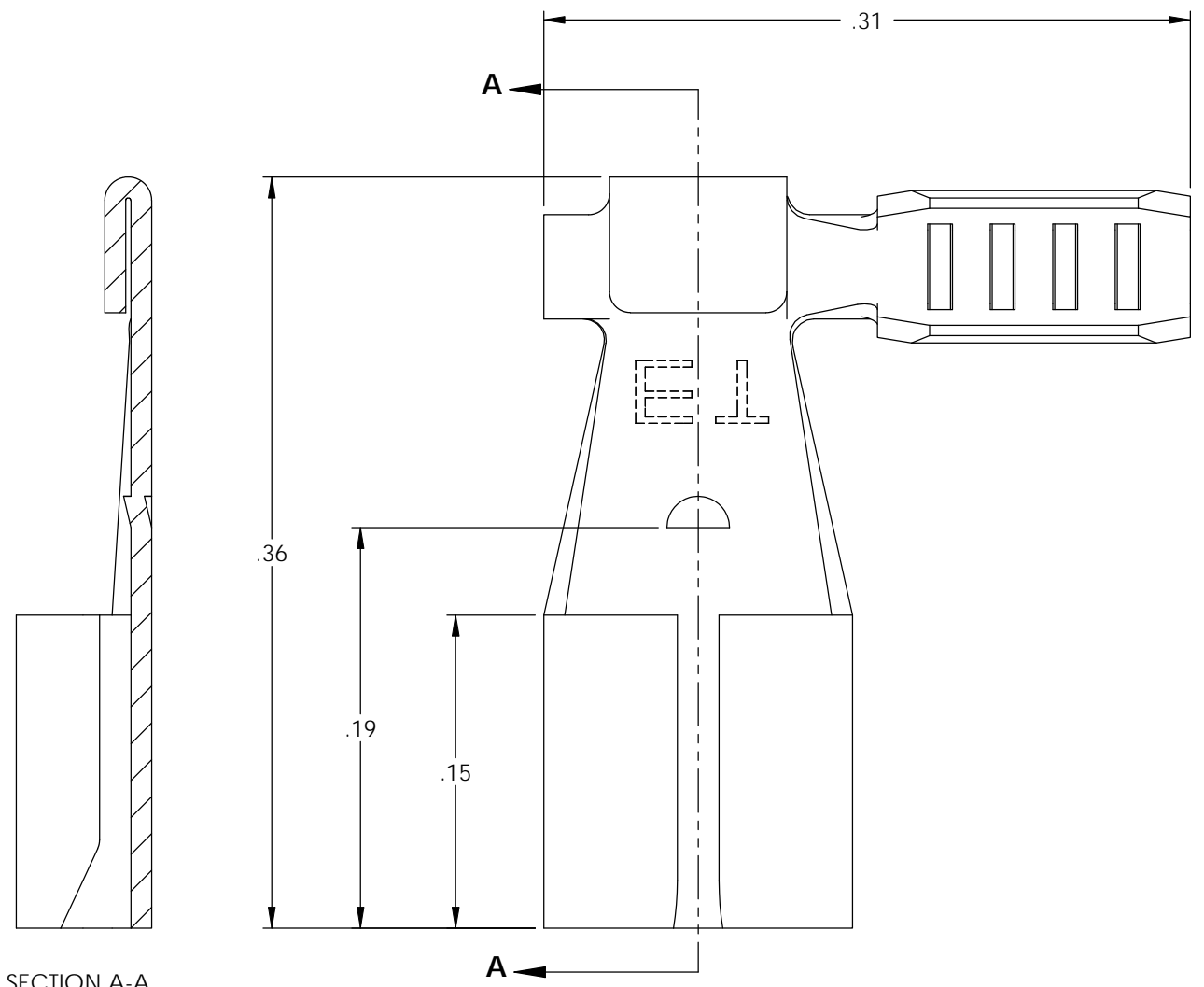


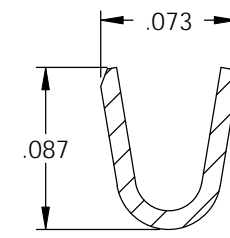
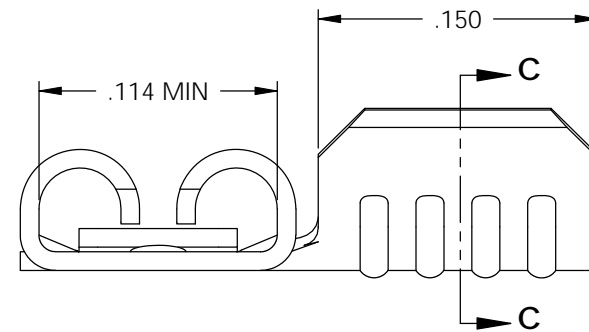
NOTE:

- 1.) MAT'L: .010 THK, BRASS, #4 TEMPER (FULL HARD), PER ETCO METAL CODE NO. 00047.
- 2.) MAT'L: .010 THK, PRE-TINNED BRASS, #4 TEMPER (FULL HARD), PER ETCO METAL CODE NO. 01054.
- 3.) PARTS MAY BE COATED WITH A LIGHT FILM OF LUBRICATION USED IN THE MANUFACTURING PROCESS.
- 4.) INSERTION/WITHDRAWAL FORCES ARE INDICATED ON THE QUALITY INSPECTION RECORD.
- 5.) WIRE RANGE: 22-20 AWG.

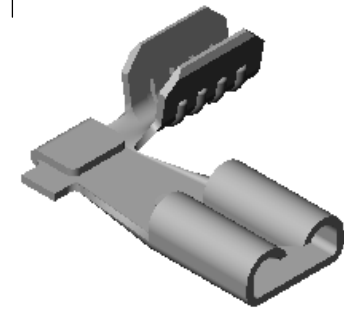
Rev.	Description of Change/ SCN#	Date
2	SCN# 103127 SCJ ORG.ENG.DWG.DATE: 9-14-00	2-14-06



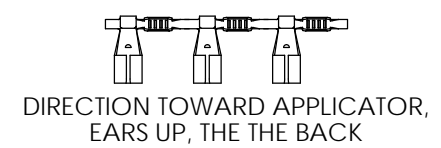
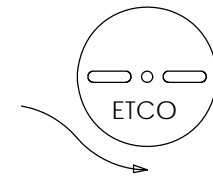
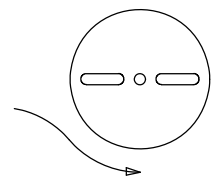
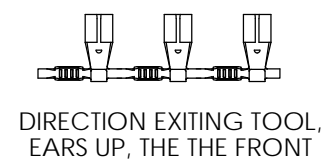
SECTION A-A  
SCALE 10 : 1



SECTION C-C  
SCALE 10 : 1



P/C	DESCRIPTION	ACCEPTED MALE	MAT'L
07747	DF71-HB	.032 X .110	NOTE 1
07748	DF71-THB	.032 X .110	NOTE 2
07752	DF73-HB	.020 X .110	NOTE 1
07753	DF73-THB	.020 X .110	NOTE 2
07768	DF75-HB	.016 X .110	NOTE 1
07769	DF75-THB	.016 X .110	NOTE 2



# UNCONTROLLED COPY

<p>THIRD ANGLE PROJECTION TOLERANCES UNLESS OTHERWISE SPECIFIED INCHES: .XX - ±.030 .XXX - ±.015 ANGLES: ±5°</p>	<p>TOOL NO. <b>0602</b></p>	<p>Title: <b>.110 FEMALE FLAG DISCONNECT</b></p>		
		<p>DO NOT SCALE DWG.</p>	<p>Drawn By: S.JOHNSON</p>	<p>Date: 2-14-06</p>
<p>ETCO Incorporated Engineered Products 25 Bellows Street Warwick, RI 02888 Phone: (401) 467-2400 Fax: (401) 467-9230 www.ETCO.com</p>		<p>Chk'd/App'd By:</p>	<p>Scale: 10X</p>	<p>Size <b>B</b></p>
		<p>Dwg. No.: <b>DF71, DF73, DF75 cust</b></p>		