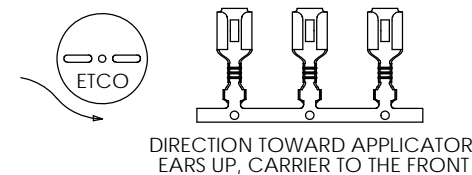
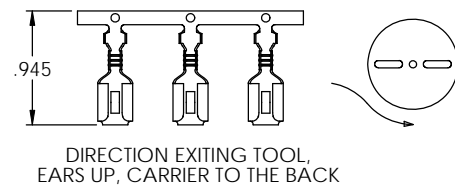
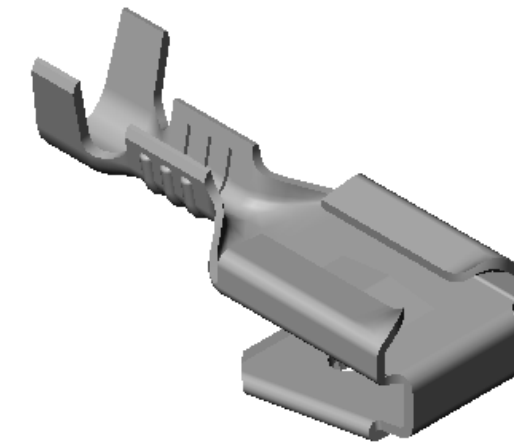
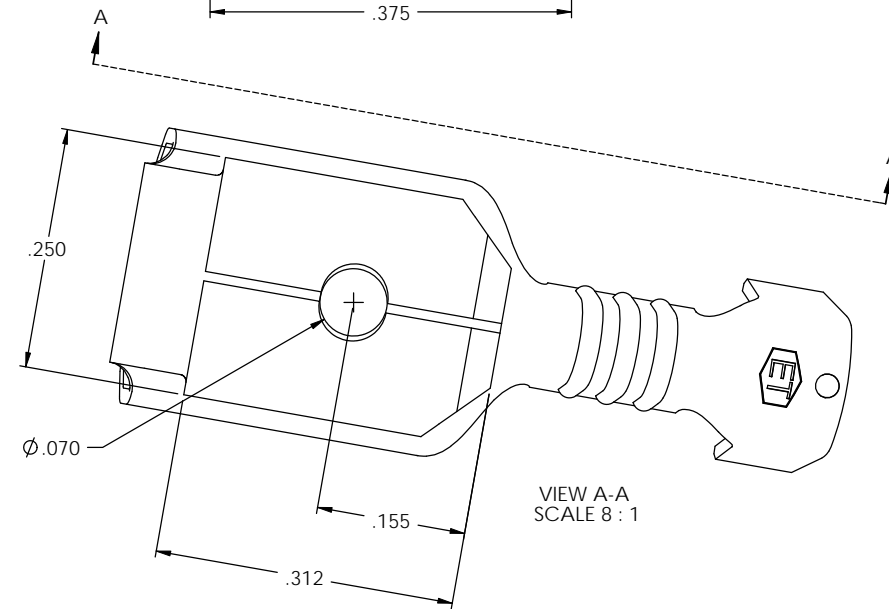
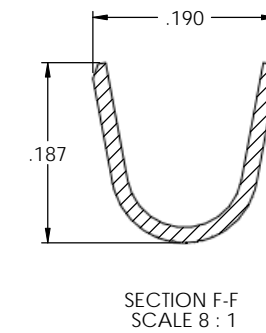
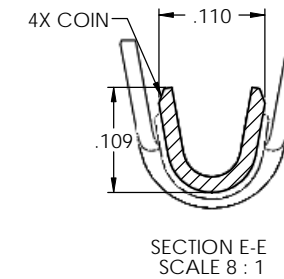
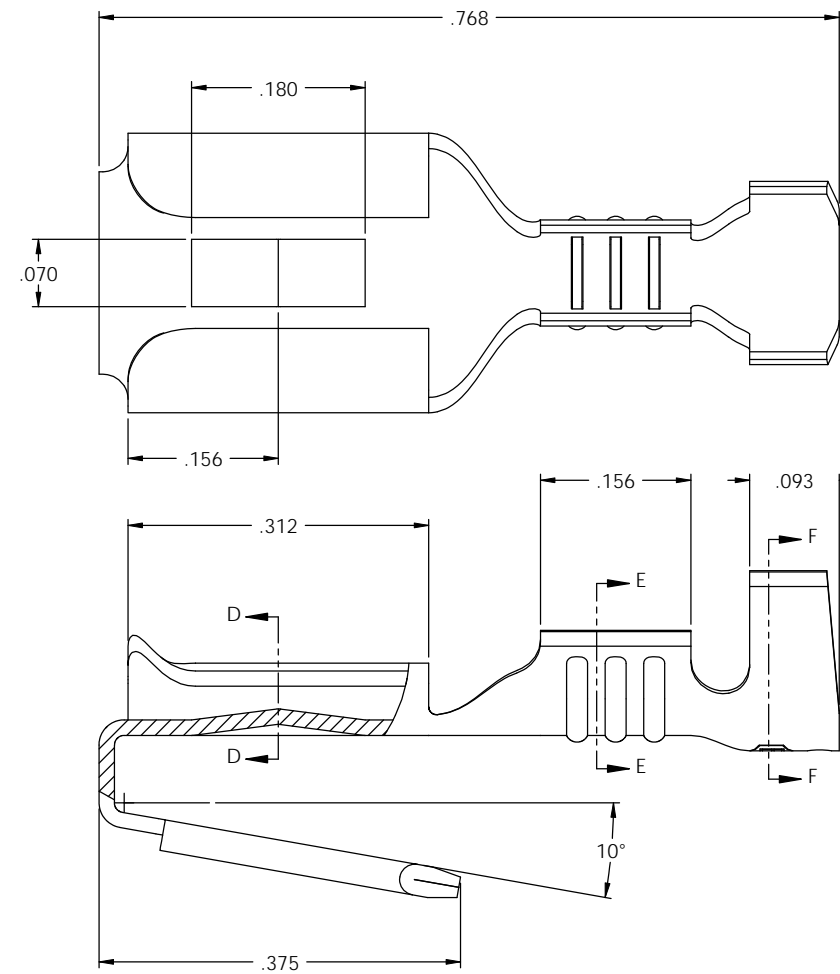
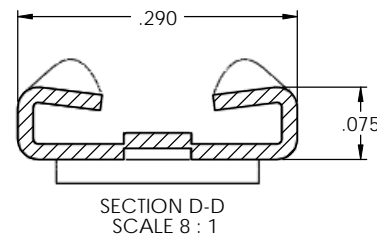


NOTES:

- MATERIAL: .016 THICK BRASS  
#4 TEMPER (FULL HARD)  
PER ETCO METAL CODE 05050.
- MATERIAL: .016 THICK PRETINNED BRASS  
#4 TEMPER (FULL HARD)  
PER ETCO METAL CODE 05248.
- PARTS MAY BE COATED WITH A LIGHT FILM OF LUBRICATION USED IN THE MANUFACTURING PROCESS.
- INSERTION/WITHDRAWAL FORCES ARE INDICATED ON THE QUALITY INSPECTION PLAN.
- ACCETPED MALE: .032 X .250 NEMA STANDARD.
- WIRE RANGE: 22-18 AWG.
- INSULATION DIAMETER RANGE:  $\phi$ .060-.115.

P/C	DESCRIPTION	MAT'L	UL	CS
07604	DM265-HB	NOTE 1	X	X
07606	DM265-THB	NOTE 2	X	X

Rev.	Description of Change/ SCN#	Date
1	SCN#140336 SCJ ORG.ENG.DWG.DATE: 11-28-79	2-27-08



**UNCONTROLLED COPY**

 THIRD ANGLE PROJECTION	TOOL NO.	Title: .032 X .250 PIGGY-BACK DISCONNECT		
	0118	DO NOT SCALE DWG.	Drawn By: S.JOHNSON	Date: 2-27-08
TOLERANCES UNLESS OTHERWISE SPECIFIED INCHES: XX - $\pm$ .030 XXX - $\pm$ .015 ANGLES: $\pm$ 5°	 ETCO	ETCO Incorporated Engineered Products 25 Bellows Street Warwick, RI 02888 Phone: (401) 467-2400 Fax: (401) 467-9230 www.ETCO.com	Chk'd/App'd By:	Scale: 8X Size: C
Dwg. No.: DM265 cust				